

Tokyo Stock Exchange 1st section(Code:1945)

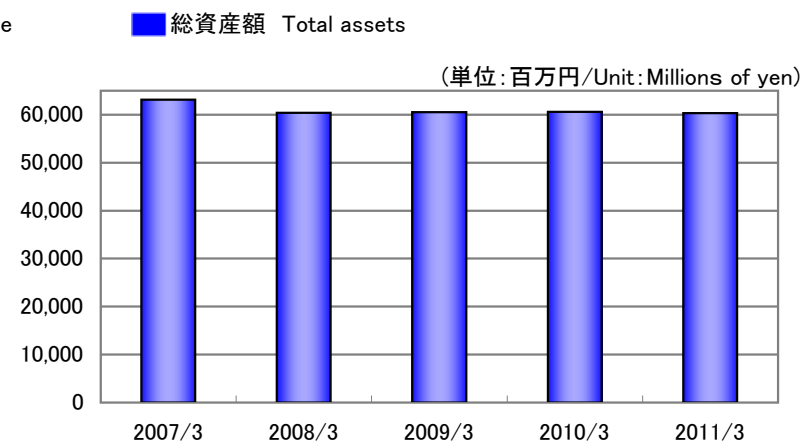
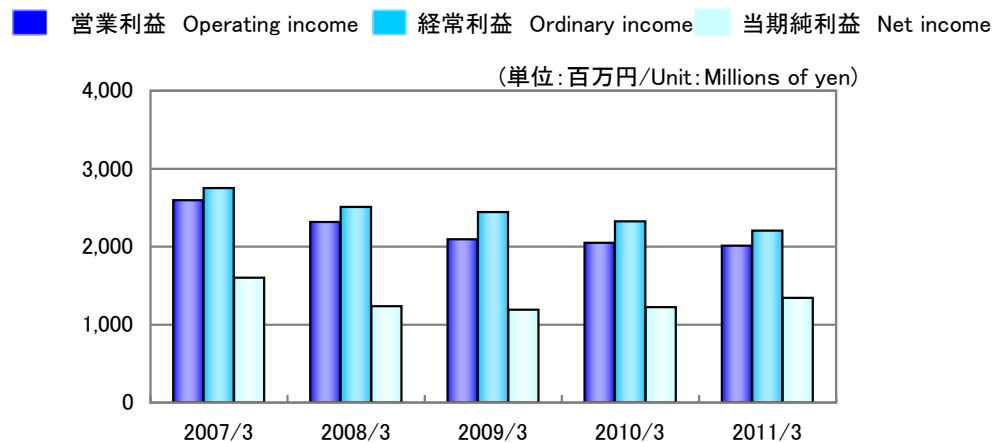
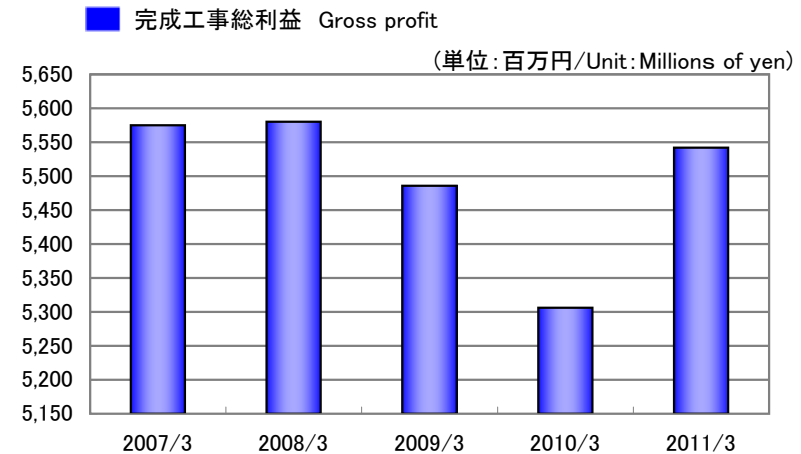
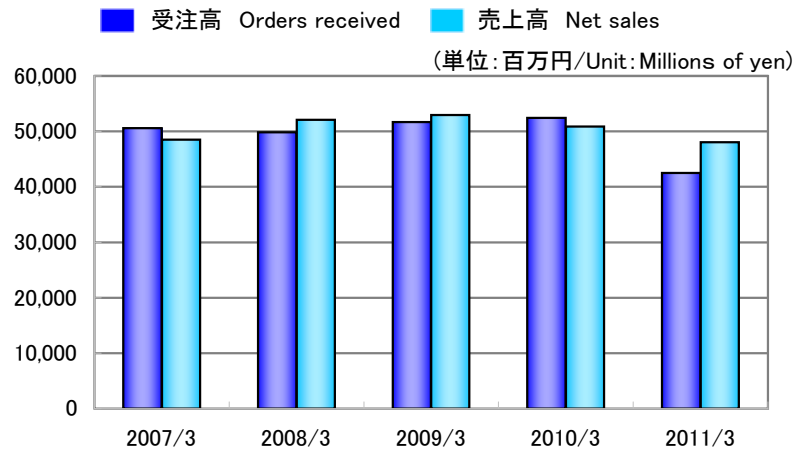
Fact Book 2010

株式会社東京エネシス
TOKYO ENERGY & SYSTEMS INC.

Fact Sheet 2010 目次

業績ハイライト(連結) Financial Highlights (Consolidated)	1
業績ハイライト(個別) Financial Highlights (Non-Consolidated)	2
セグメント別受注高(連結) Orders Received by Segment Performance (Consolidated)	3
セグメント別受注高(個別) Orders Received by Segment Performance (Non-Consolidated)	4
セグメント別売上高(連結) Net Sales by Segment Performance (Consolidated)	5
セグメント別売上高(個別) Net Sales by Segment Performance (Non-Consolidated)	6
得意先別売上高(個別) Net Sales by Client (Non-Consolidated)	7
収益性指標(連結) Profitability (Consolidated)	8
安全性指標(連結) Stability (Consolidated)	9
従業員1人当たり指標(連結) Per Employee (Consolidated)	10
1株当たり指標(個別) Per Share Data (Non-Consolidated)	11
その他指標(連結) Other Data (Consolidated)	12
その他指標(個別) Other Data (Non-Consolidated)	13
連結貸借対照表 [資産の部] Consolidated Balance Sheets [Assets]	14
連結貸借対照表 [負債/資本の部] Consolidated Balance Sheets [Liabilities/Shareholders' Equity]	15
連結損益計算書 Consolidated Statements of Operations	16
連結キャッシュフロー計算書 Consolidated Statements of Cash Flows	16
貸借対照表 [資産の部] Non-Consolidated Balance Sheets [Assets]	17
貸借対照表 [負債/資本の部] Non-Consolidated Balance Sheets [Liabilities/Shareholders' Equity]	18
損益計算書 Non-Consolidated Statements of Operations	19
会社概況 Corporate Information	20

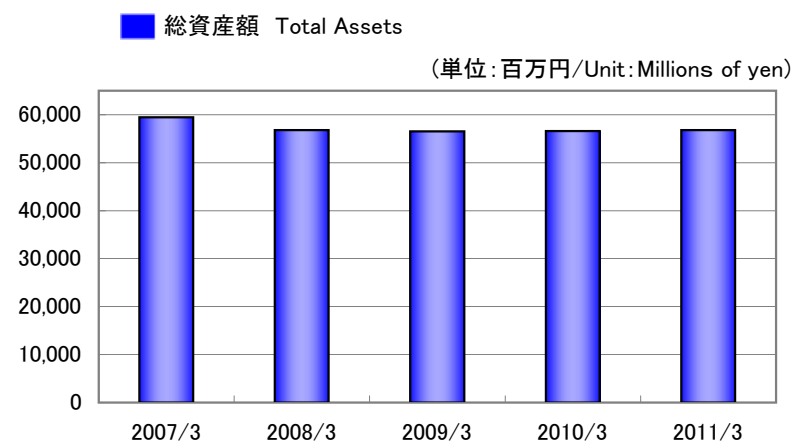
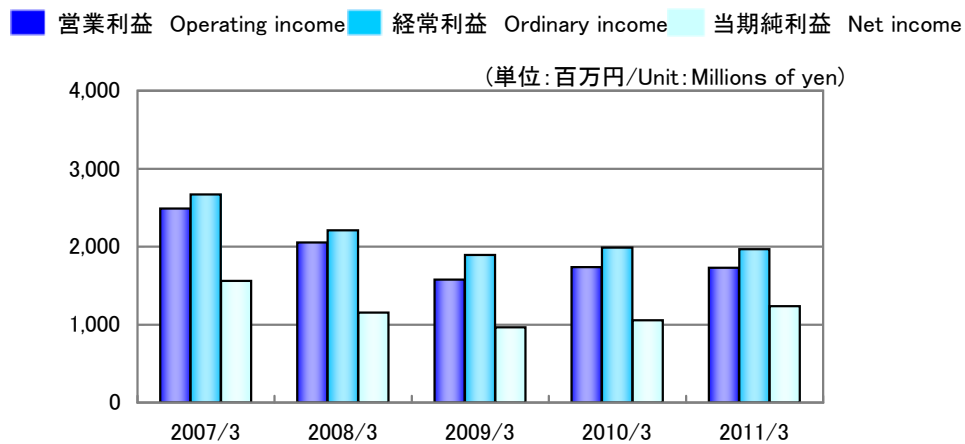
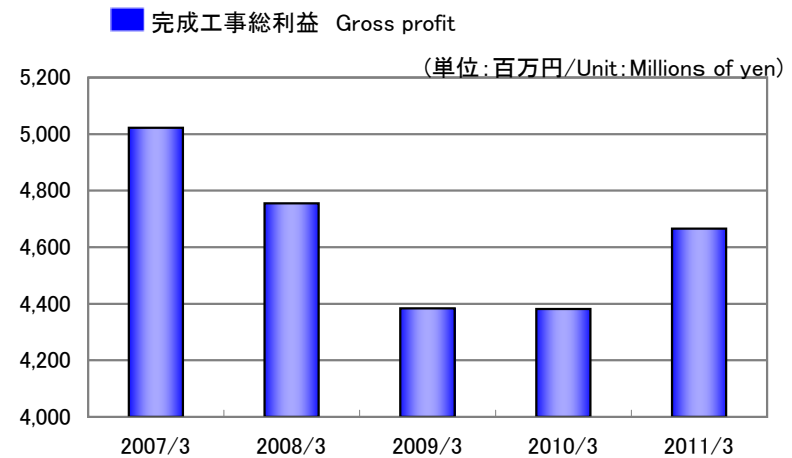
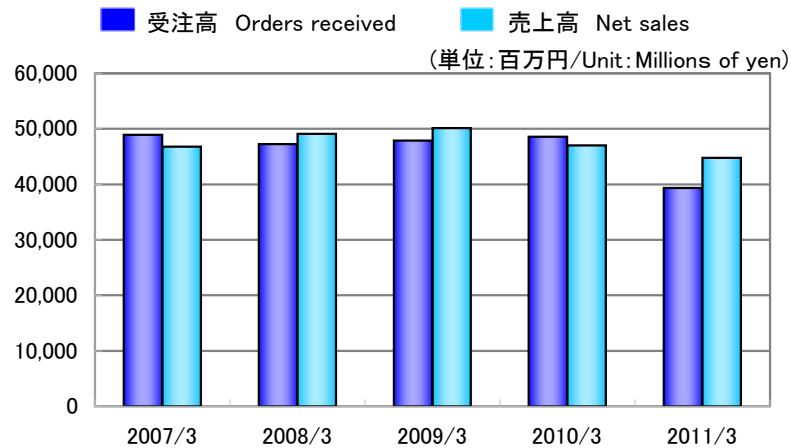
業績ハイライト(連結) Financial Highlights (Consolidated)



(単位: 百万円/Unit: Millions of yen)

		2007/3	2008/3	2009/3	2010/3	2011/3
受注高	Orders received	50,568	49,812	51,702	52,419	42,494
売上高 (完成工事高)	Net sales	48,490	52,090	52,936	50,878	48,032
完成工事総利益	Gross profit	5,575	5,580	5,486	5,306	5,542
営業利益	Operating income	2,595	2,316	2,095	2,050	2,011
経常利益	Ordinary income	2,753	2,508	2,442	2,324	2,205
当期純利益	Net income	1,601	1,237	1,189	1,225	1,344
総資産額	Total assets	63,138	60,364	60,557	60,612	60,357

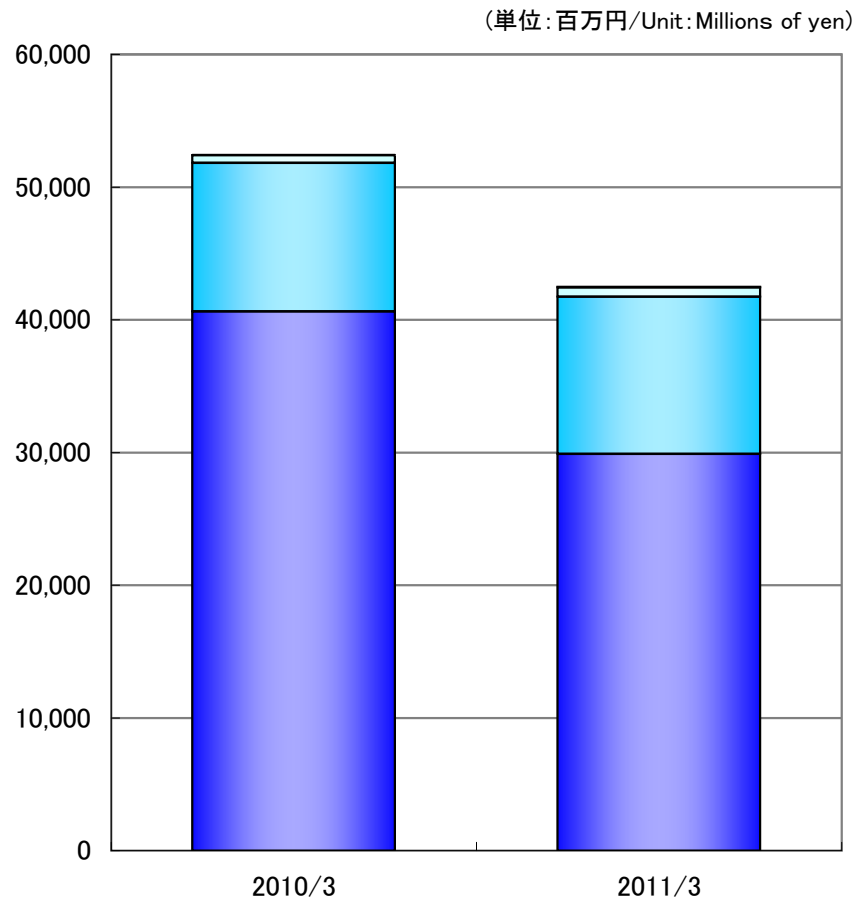
業績ハイライト(個別) Financial Highlights (Non-Consolidated)



(単位: 百万円/Unit: Millions of yen)

		2007/3	2008/3	2009/3	2010/3	2011/3
受注高	Orders received	48,940	47,244	47,877	48,549	39,363
売上高(完成工事高)	Net sales	46,807	49,116	50,126	47,037	44,756
完成工事総利益	Gross profit	5,022	4,755	4,384	4,381	4,666
営業利益	Operating income	2,490	2,053	1,579	1,738	1,727
経常利益	Ordinary income	2,671	2,210	1,895	1,987	1,969
当期純利益	Net income	1,562	1,156	966	1,055	1,236
総資産額	Total assets	59,483	56,771	56,505	56,589	56,770

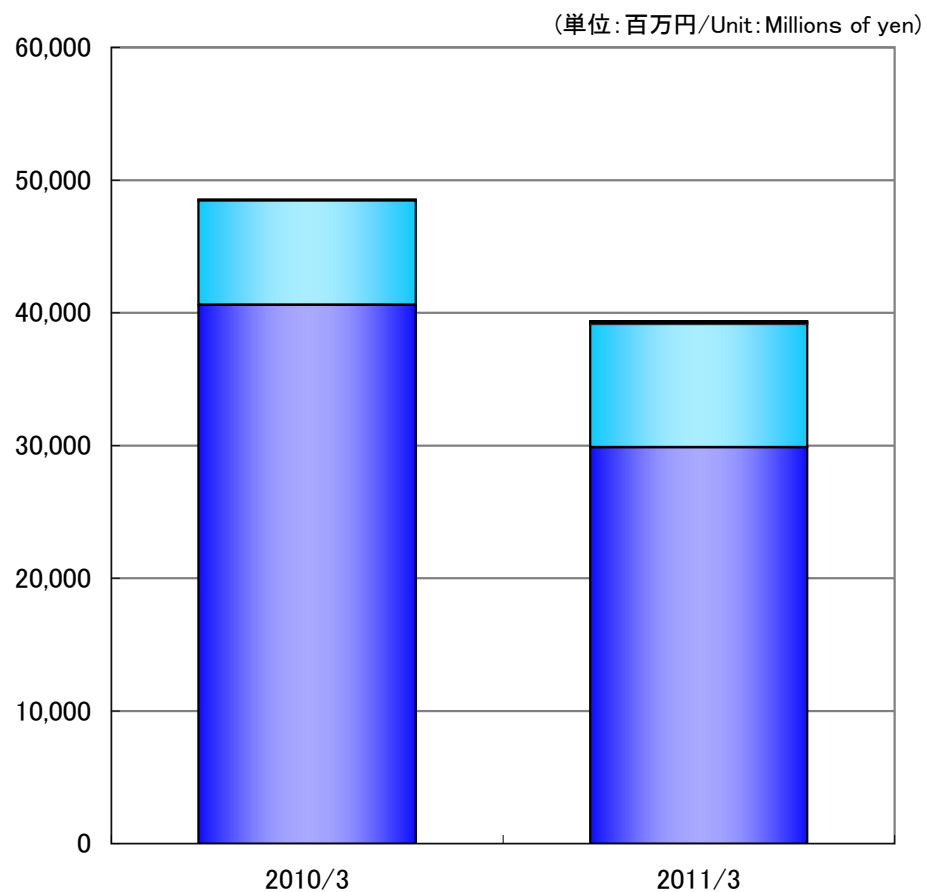
セグメント別受注高(連結) Orders Received by Segment Performance (Consolidated)



(単位: 百万円/Unit: Millions of yen)

		2010/3	2011/3
発電設備工事業	Power Plant Facilities Segment	40,620	29,884
電気・通信設備工事業	Electrical Facilities & Telecommunication Segment	11,212	11,843
その他の事業	Other Segment	570	699
差異調整額		15	67
計	Total	52,419	42,494

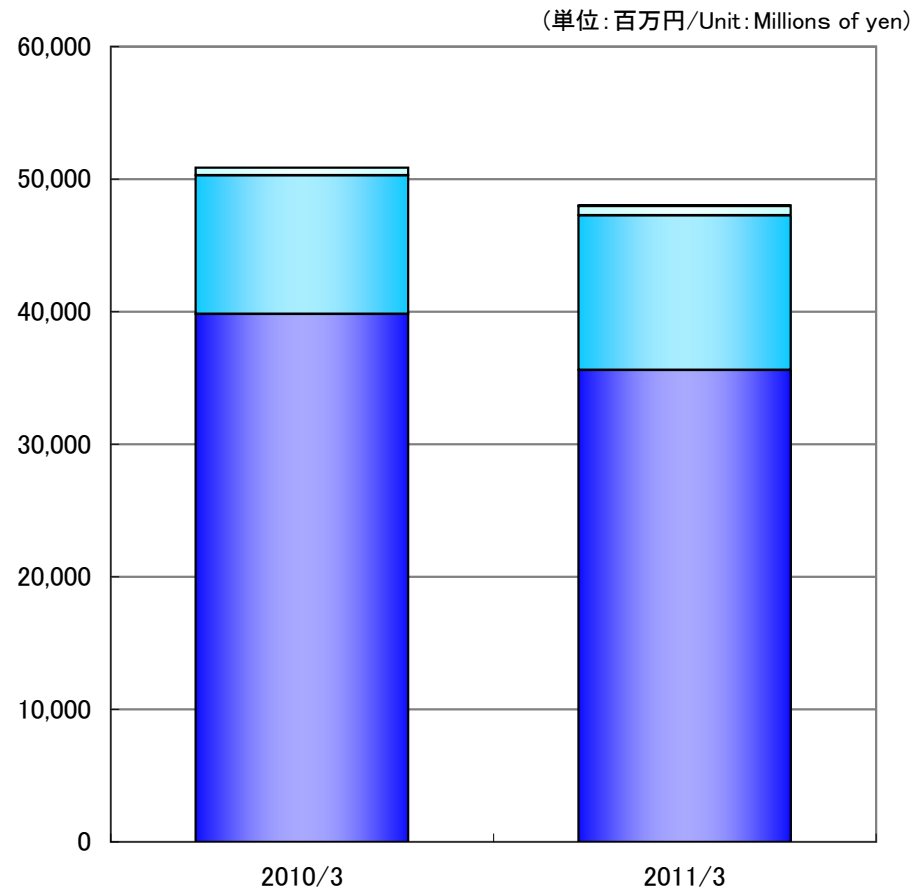
セグメント別受注高(個別) Orders Received by Segment Performance (Non-Consolidated)



(単位: 百万円/Unit: Millions of yen)

		2010/3	2011/3
発電設備工事業	Power Plant Facilities Segment	40,604	29,872
電気・通信設備工事業	Electrical Facilities & Telecommunication Segment	7,860	9,277
その他の事業	Other Segment	70	145
差異調整額		15	67
計	Total	48,549	39,363

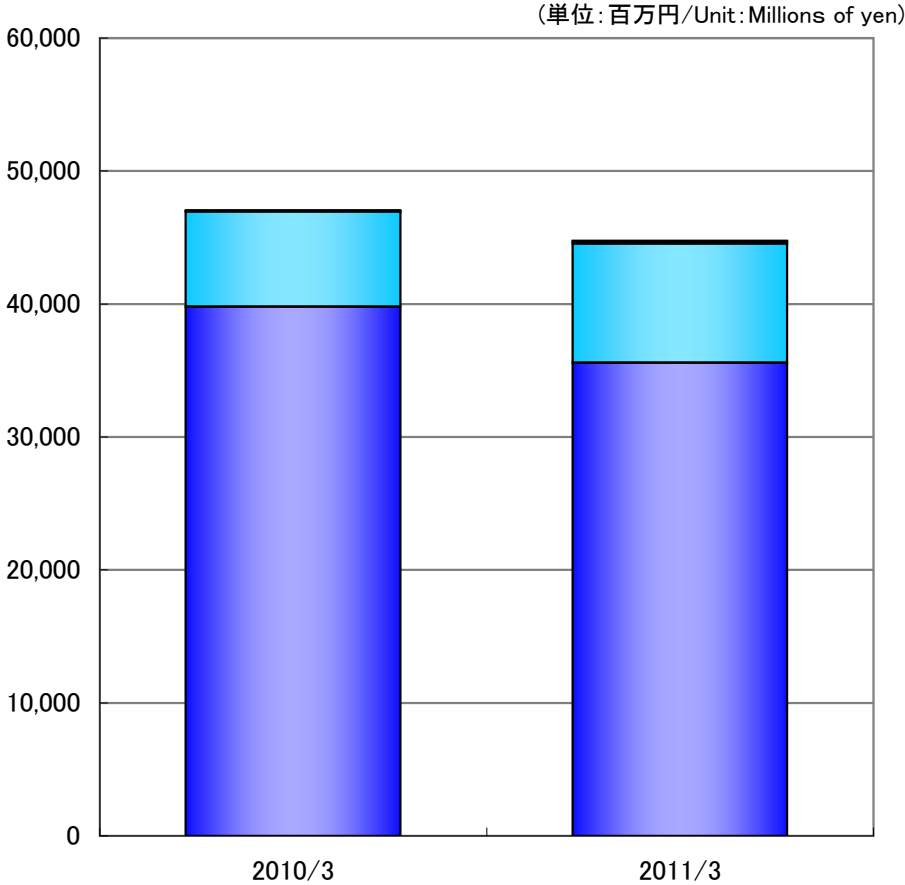
セグメント別売上高(連結) Net Sales by Segment Performance (Consolidated)



(単位: 百万円/Unit: Millions of yen)

		2010/3	2011/3
発電設備工事業	Power Plant Facilities Segment	39,820	35,600
電気・通信設備工事業	Electrical Facilities & Telecommunication Segment	10,471	11,665
その他の事業	Other Segment	570	699
差異調整額		15	67
計	Total	50,878	48,032

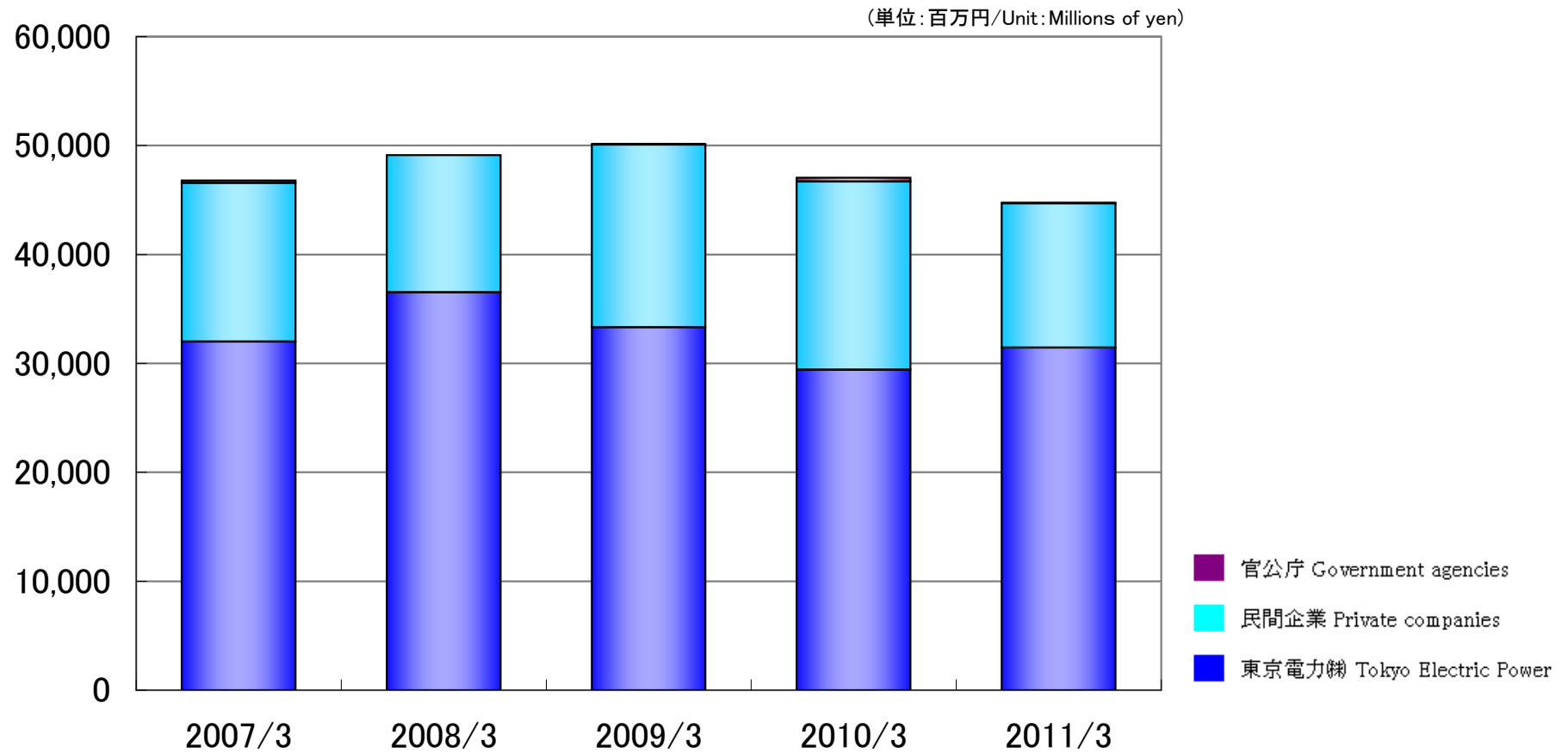
セグメント別売上高(個別) Net Sales by Segment Performance (Non-Consolidated)



(単位: 百万円/Unit: Millions of yen)

		2010/3	2011/3
発電設備工事業	Power Plant Facilities Segment	39,811	35,581
電気・通信設備工事業	Electrical Facilities & Telecommunication Segment	7,140	8,960
その他の事業	Other Segment	70	145
差異調整額		15	67
計	Total	47,037	44,756

得意先別売上高(個別) Net Sales by Client (Non-Consolidated)

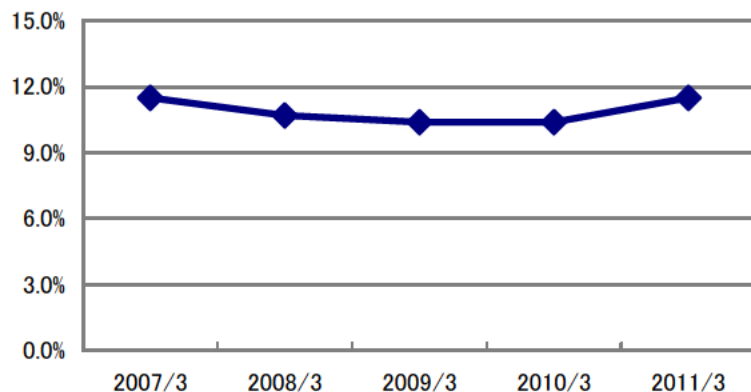


(単位: 百万円/Unit: Millions of yen)

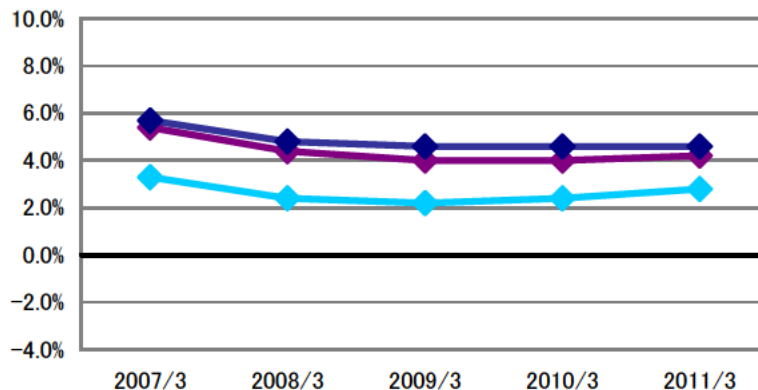
		2007/3	2008/3	2009/3	2010/3	2011/3
東京電力(株)	Tokyo Electric Power	32,004	36,518	33,317	29,414	31,432
民間企業	Private companies	14,565	12,596	16,756	17,272	13,267
官公庁	Government agencies	238	1	53	351	57
合計	Total	46,807	49,116	50,126	47,037	44,756

収益性指標(連結) Profitability (Consolidated)

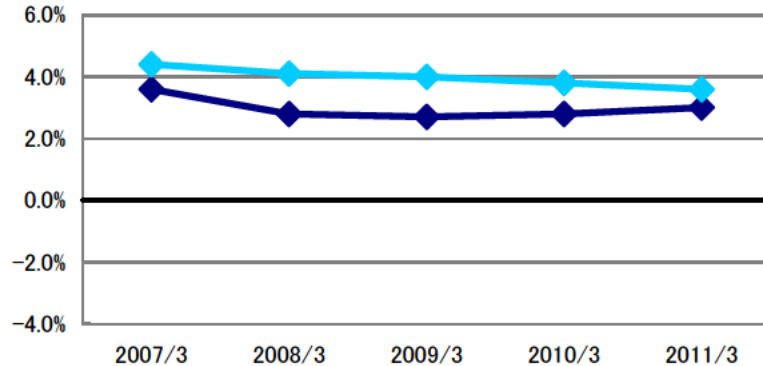
◆ 売上高総利益率(%) Ratio of gross profit to net sales(%)



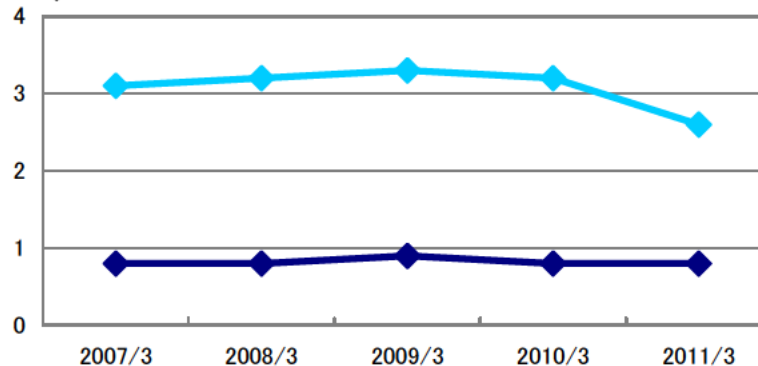
◆ 売上高営業利益率(%) Ratio of operating income to net sales(%)
 ◆ 売上高経常利益率(%) Ratio of ordinary income to net sales(%)
 ◆ 売上高当期純利益率(%) Ratio of net income to net sales(%)



◆ 自己資本利益率(%) Return on equity(%)
 ◆ 総資産経常利益率(%) Return on total assets(%)



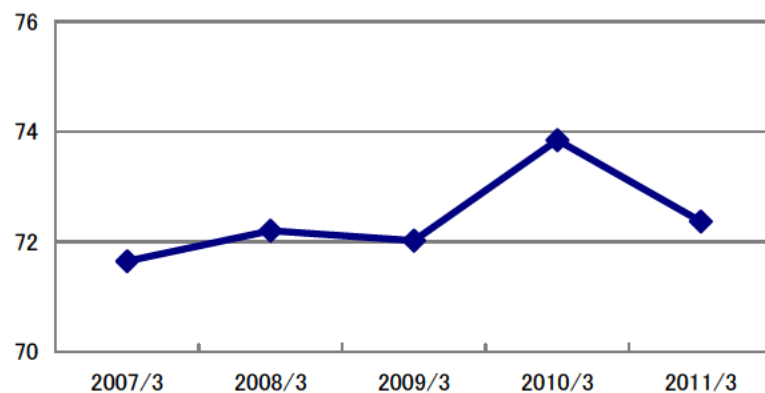
◆ 有形固定資産回転率(回) Tangible fixed assets turnover(Times)
 ◆ 総資産回転率(回) Total assets turnover(Times)



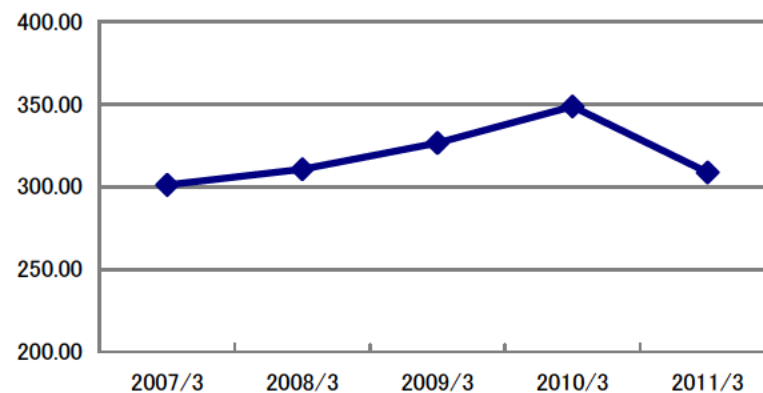
		2007/3	2008/3	2009/3	2010/3	2011/3
売上高総利益率(%)	Ratio of gross profit to net sales (%)	11.5%	10.7%	10.4%	10.4%	11.5%
売上高営業利益率(%)	Ratio of operating income to net sales (%)	5.4%	4.4%	4.0%	4.0%	4.2%
売上高経常利益率(%)	Ratio of ordinary income to net sales (%)	5.7%	4.8%	4.6%	4.6%	4.6%
売上高当期純利益率(%)	Ratio of net income to net sales (%)	3.3%	2.4%	2.2%	2.4%	2.8%
自己資本利益率(%)	Return on equity (%)	3.6%	2.8%	2.7%	2.8%	3.0%
総資産経常利益率(%)	Return on total assets (%)	4.4%	4.1%	4.0%	3.8%	3.6%
総資産回転率(回)	Total assets turnover (Times)	0.8回	0.8回	0.9回	0.8回	0.8回
有形固定資産回転率(回)	Tangible fixed assets turnover (Times)	3.1回	3.2回	3.3回	3.2回	2.6回

安全性指標(連結) Stability (Consolidated)

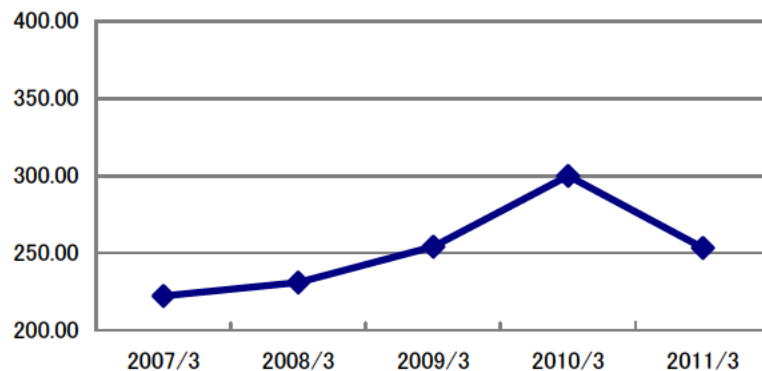
◆ 自己資本比率(%) Equity ratio(%)



◆ 流動比率(%) Current ratio(%)

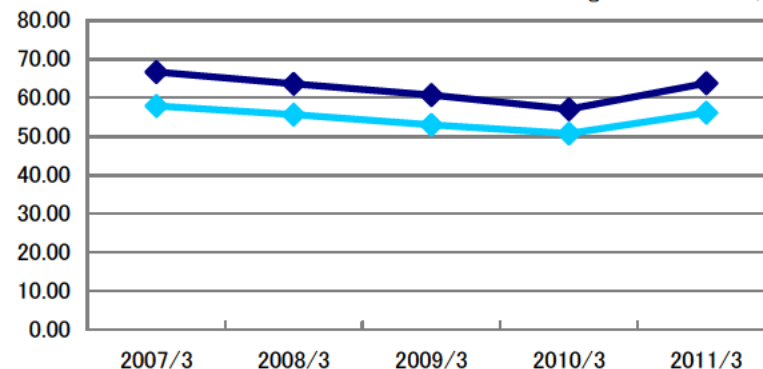


◆ 当座比率(%) Quick assets ratio(%)



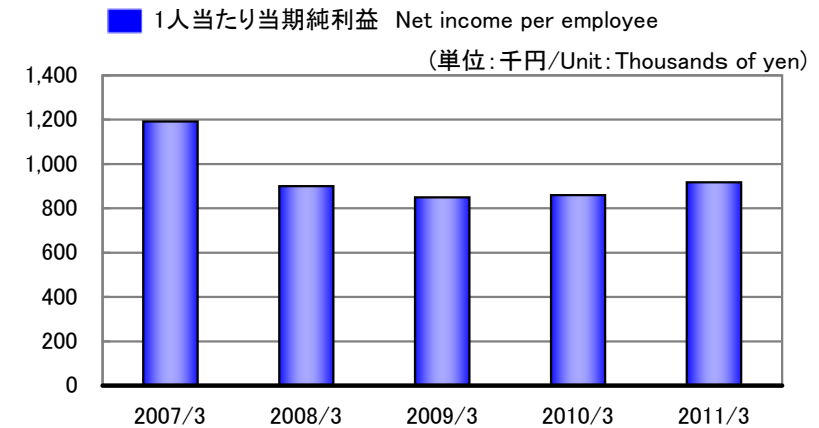
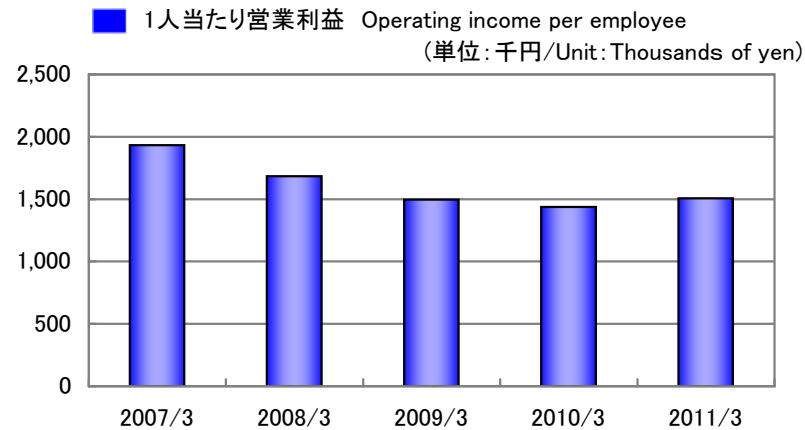
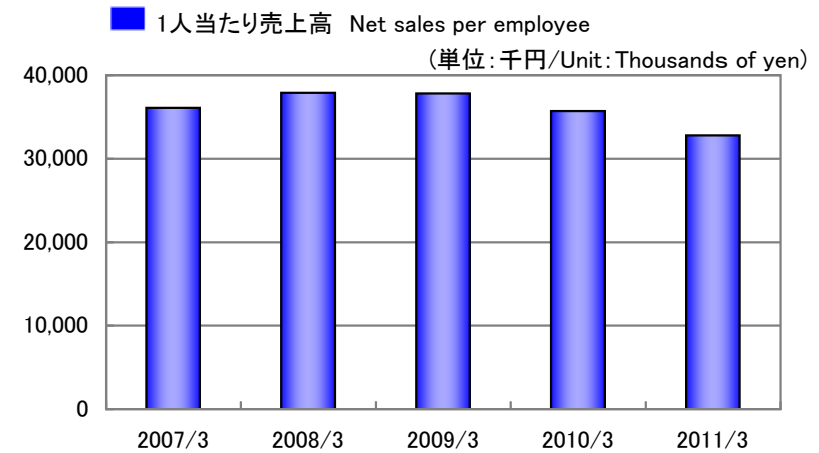
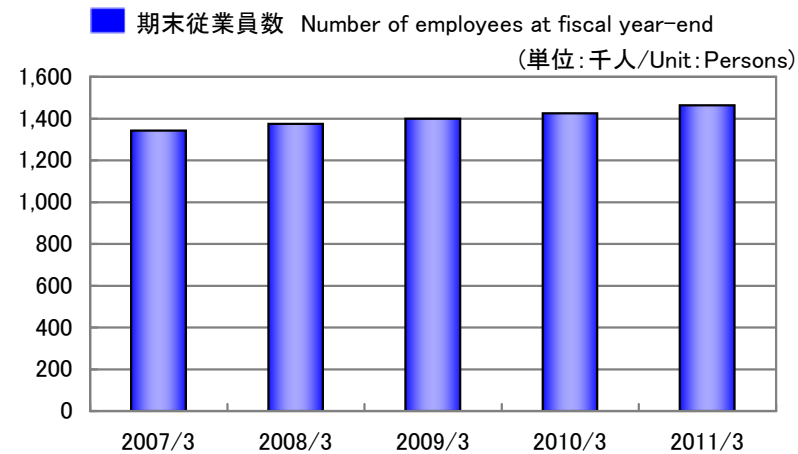
◆ 固定比率(%) Fixed assets ratio(%)

◆ 固定長期適合比率(%) Ratio of fixed assets-to-equity capital and long-term liabilities(%)



		2007/3	2008/3	2009/3	2010/3	2011/3
自己資本比率(%)	Equity ratio (%)	71.65	72.24	72.02	73.85	72.37
流動比率(%)	Current ratio (%)	301.20	310.69	326.53	348.83	308.67
当座比率(%)	Quick assets ratio (%)	222.20	230.86	254.00	299.84	253.35
固定比率(%)	Fixed assets ratio (%)	66.67	63.55	60.69	57.06	63.76
固定長期適合比率(%)	Ratio of fixed assets-to-equity capital and long-term liabilities (%)	57.90	55.62	52.96	50.71	56.14

従業員1人当たり指標(連結) Per Employee (Consolidated)

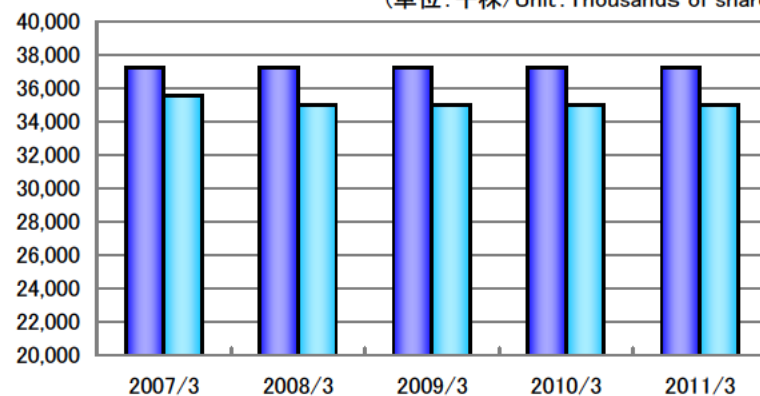


		2007/3	2008/3	2009/3	2010/3	2011/3
期末従業員数(人)	Number of employees at fiscal year-end (Persons)	1,343	1,375	1,400	1,425	1,464
1人当たり売上高(千円)	Net sales per employee (Thousands of yen)	36,106	37,884	37,811	35,704	32,809
1人当たり営業利益(千円)	Operating income per employee (Thousands of yen)	1,932	1,684	1,496	1,438	1,374
1人当たり当期純利益(千円)	Net income per employee (Thousands of yen)	1,192	900	849	860	918

1株当たり指標(個別) Per Share Data (Non-Consolidated)

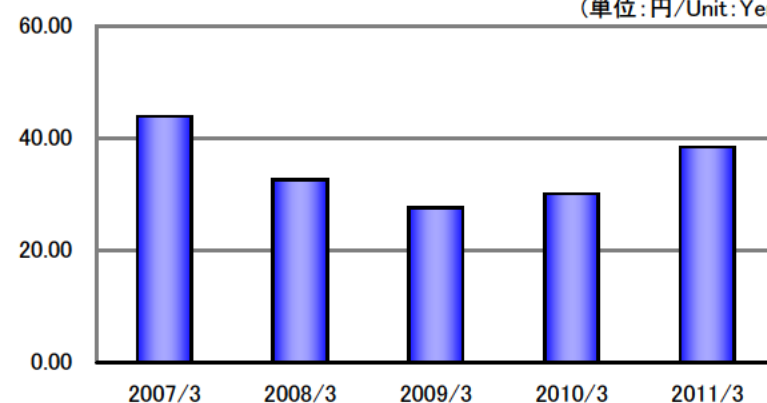
■ 発行済株式総数 Number of outstanding shares issued
 ■ 自己株式控除後発行済株式総数 After deduction from treasury stock

(単位:千株/Unit:Thousands of share)



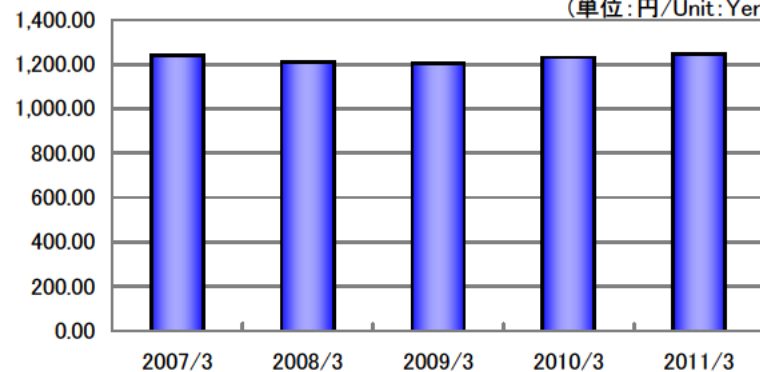
■ 1株当たり当期純利益 Net income per share

(単位:円/Unit:Yen)



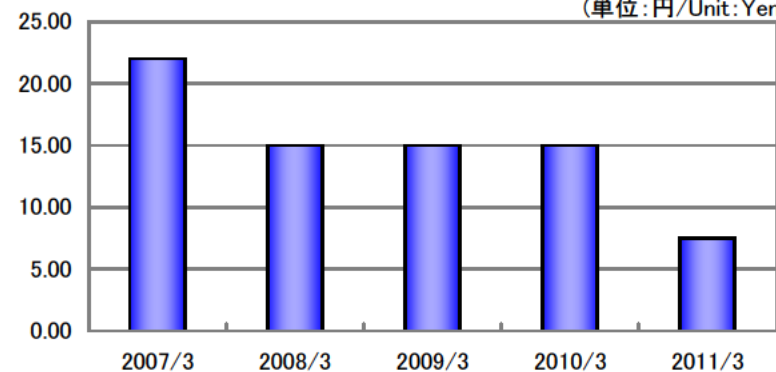
■ 1株当たり純資産額 Net assets per share

(単位:円/Unit:Yen)



■ 1株当たり配当金 Cash dividends per share

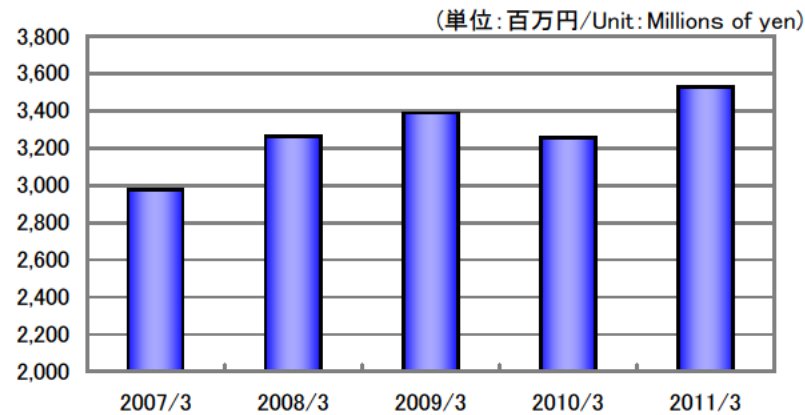
(単位:円/Unit:Yen)



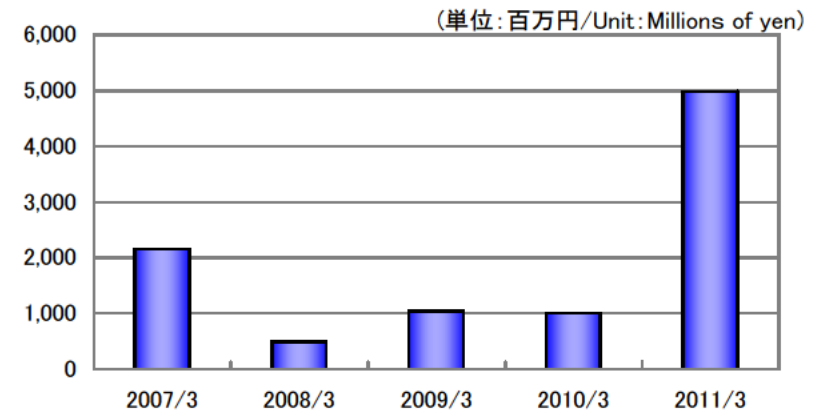
		2007/3	2008/3	2009/3	2010/3	2011/3
発行済株式総数(千株)	Number of outstanding shares issued (Thousands of share)	37,261	37,261	37,261	37,261	37,261
(自己株式控除後)	After deduction from treasury stock	35,548	35,030	35,022	35,012	35,002
1株当たり当期純利益(円)	Net income per share (Yen)	43.93	32.63	27.59	30.14	35.32
1株当たり純資産額(円)	Net assets per share (Yen)	1,238.44	1,207.93	1,202.02	1,230.31	1,196.63
1株当たり配当金(円)	Cash dividends per share (Yen)	22.00	15.00	15.00	15.00	15.00

その他指標(連結) Other Data (Consolidated)

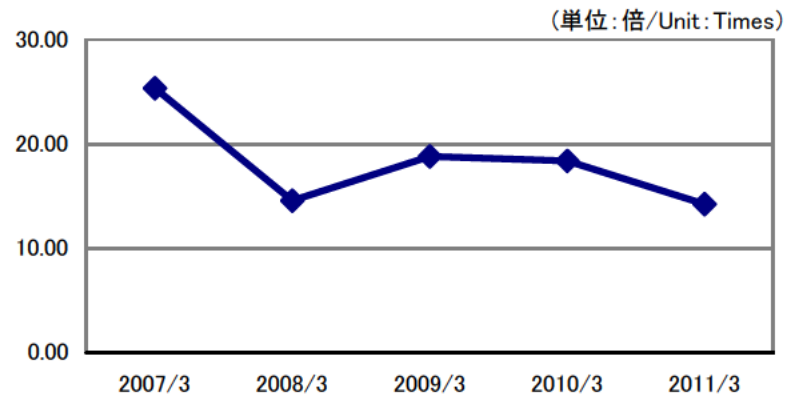
■ 販売費及び一般管理費 Selling, general and administrative expenses



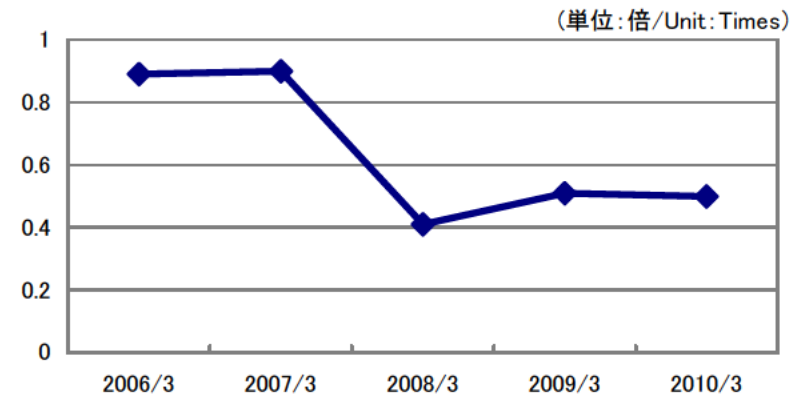
■ 設備投資額 Capital investment



■ 株価収益率 Price earnings ratio



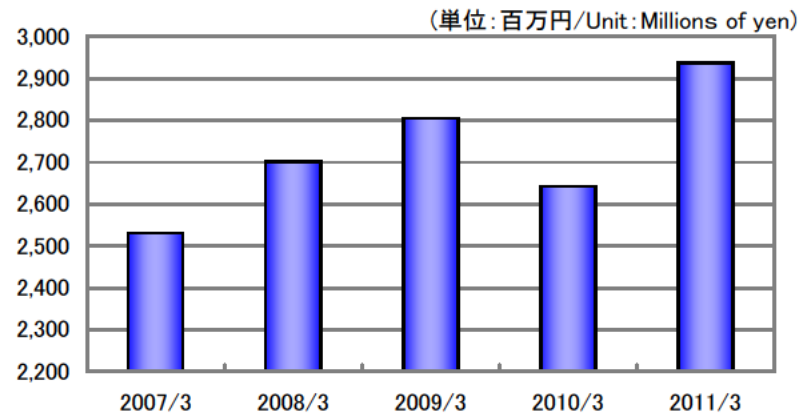
■ 株価純資産倍率 Price book-value ratio



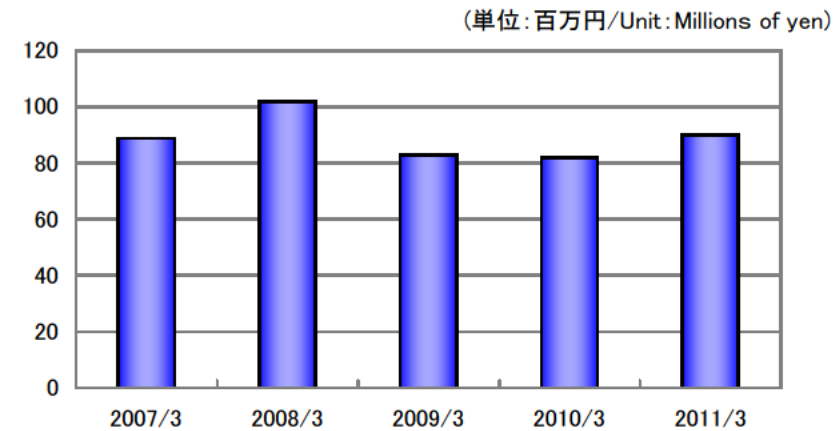
		2007/3	2008/3	2009/3	2010/3	2011/3
販売費及び一般管理費(百万円)	Selling, general and administrative expenses (Millions of yen)	2,980	3,264	3,390	3,256	3,530
設備投資額(百万円)	Capital investment (Millions of yen)	2,149	484	1,035	1,006	4,988
株価収益率(倍)	Price earnings ratio (Times)	25.36	14.59	18.82	18.39	14.24
株価純資産倍率(倍)	Price book-value ratio (Times)	0.90	0.41	0.51	0.50	0.44

その他指標(個別) Other Data (Non-Consolidated)

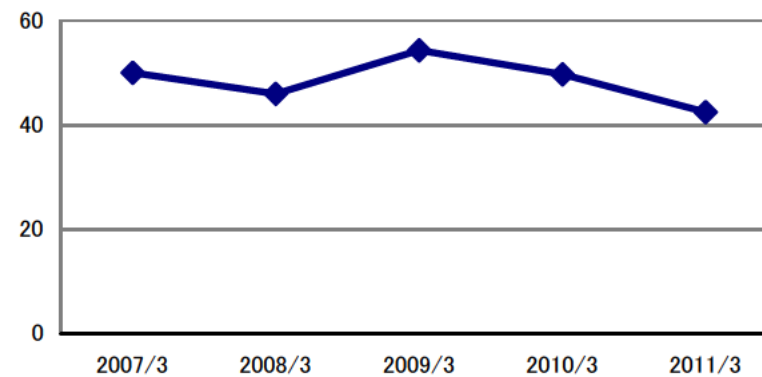
■ 販売費及び一般管理費 Selling, general and administrative expenses



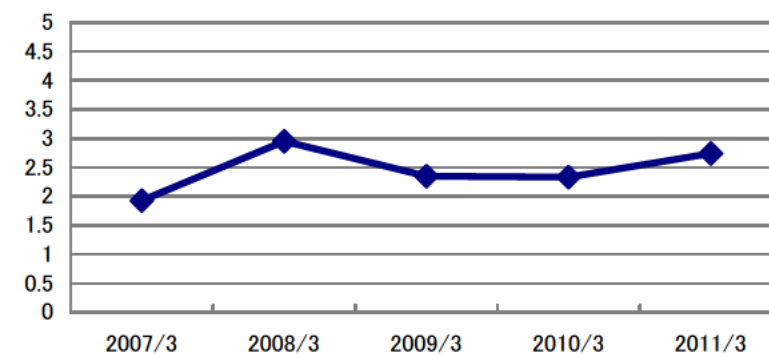
■ 研究開発費 Research and development expenditure



■ 配当性向(%) Dividend payout ratio(%)



■ 配当利回り(%) Dividend yield(%)



		2007/3	2008/3	2009/3	2010/3	2011/3
販売費及び一般管理費(百万円)	Selling, general and administrative expenses (Millions of yen)	2,531	2,702	2,805	2,642	2,938
研究開発費(百万円)	Research and development expenditure (Millions of yen)	89	102	83	82	90
配当性向(%)	Dividend payout ratio (%)	50.08	45.97	54.37	49.77	42.47
配当利回り(%)	Dividend yield (%)	1.93	2.95	2.35	2.33	2.74

連結貸借対照表 [資産の部] Consolidated Balance Sheets [Assets]

(単位:百万円/Unit:Millions of yen)

		2007/3	2008/3	2009/3	2010/3	2011/3
資産の部	Assets					
流動資産	Current assets	32,978	32,653	33,999	35,073	32,505
現金預金	Cash and cash equivalents	4,735	3,692	4,065	3,850	4,716
受取手形・完成工事未収入金	Notes and accounts receivable-trade	12,555	11,254	13,257	16,830	14,426
有価証券	Marketable securities	7,040	9,316	9,123	9,466	7,536
未成工事支出金等	Construction projects in progress	7,438	7,195	-	-	-
未成工事支出金	Construction projects in progress	-	-	6,358	3,452	2,898
繰延税金資産	Deferred tax assets	841	963	910	998	1,034
その他	Other	369	232	304	479	1,896
貸倒引当金	Allowance for doubtful accounts	△2	△1	△20	△4	△4
固定資産	Fixed assets	30,159	27,711	26,557	25,539	27,851
有形固定資産	Property and equipment	16,539	16,173	15,937	16,144	18,827
建物・構築物	Buildings and structures	14,776	6,488	6,608	7,020	6,954
機械・運搬具	Machinery and vehicles	2,040	321	276	194	152
工具器具・備品	Tools and equipment	3,566	582	551	631	577
土地	Land	8,575	8,575	8,246	8,246	10,888
リース資産	Lease	-	-	4	11	11
建設仮勘定	Construction in progress	4	206	250	39	242
減価償却累計額	Accumulated depreciation	△12,423	-	-	-	-
無形固定資産	Intangible fixed assets	198	182	161	144	98
投資その他の資産	Investments and other assets	13,421	11,355	10,458	9,250	8,925
投資有価証券	Investment securities	12,576	9,819	8,526	7,905	6,494
長期貸付金	Long-term loans receivable	3	2	6	6	10
繰延税金資産	Deferred tax assets	112	1,099	1,586	990	1,965
その他	Other	818	521	434	441	520
貸倒引当金	Allowance for doubtful accounts	△89	△86	△96	△93	△65
資産合計	Total assets	63,138	60,364	60,557	60,612	60,357

※2008/3月期において、有形固定資産の表示については、2007/3月期連結会計年度まで間接控除形式で表示していたが、直接控除形式に変更しています。

連結貸借対照表 [負債/資本の部] Consolidated Balance Sheets [Liabilities/Shareholders' Equity]

(単位:百万円/Unit: Millions of yen)

		2007/3	2008/3	2009/3	2010/3	2011/3
負債の部	Liabilities					
流動負債	Current liabilities	10,949	10,510	10,412	10,054	10,530
支払手形・工事未払金等	Notes and accounts payable-trade	6,112	5,554	5,429	5,296	5,596
短期借入金	Short-term borrowings	716	686	553	773	334
未払法人税等	Accrued incom taxes	477	511	779	689	718
未成工事受入金	Advances received on construction projects in progress	795	1,123	957	283	280
役員賞与引当金	Allowance for bonuses to directors	43	43	44	43	31
完成工事補償引当金	Allowance for compensation for construction damages	16	15	23	29	41
工事損失引当金	Allowance for losses on construction contracts	281	295	418	618	702
その他	Other	2,505	2,280	2,206	2,320	2,826
固定負債	Long-term liabilities	6,854	6,217	6,387	5,604	5,931
長期借入金	Long-term debt	200	225	258	134	246
繰延税金負債	Deferred tax liabilities	88	14	16	29	29
退職給付引当金	Accrued retirement benefits	5,956	5,613	5,877	5,301	5,385
役員退職慰勞引当金	Allowance for retirement benefits for directors and auditors	86	85	25	22	24
資産除去債務	Asset removal debt	-	-	-	-	128
その他	Other	522	278	210	115	116
負債合計	Total liabilities	17,803	16,728	16,800	15,658	16,462
純資産の部	Net assets					
資本金	Common stock	2,881	2,881	2,881	2,881	2,881
資本剰余金	Capital surplus	3,727	3,728	3,729	3,729	3,730
利益剰余金	Retained earnings	35,419	35,998	36,662	37,363	38,182
自己株式	Treasury stock	△ 658	△ 966	△ 973	△ 980	△ 986
株主資本合計	Total shareholders' equity	41,369	41,642	42,300	42,993	43,807
その他有価証券評価差額金	Net unrealized holding gain on available-for-sale securities	3,865	1,962	1,311	1,767	△ 128
少数株主持分	Minority interests	98	31	144	193	216
純資産合計	Total net assets	45,334	43,636	43,756	44,954	43,895
負債・純資産(資本)合計	Total liabilities, net assets (Shareholders' equity)	63,138	60,364	60,557	60,612	60,357

連結損益計算書 Consolidated Statements of Operations

		(単位:百万円/Unit:Millions of yen)				
		2007/3	2008/3	2009/3	2010/3	2011/3
売上高 (完成工事高)	Net sales	48,490	52,090	52,936	50,878	48,032
売上原価 (完成工事原価)	Cost of sales	42,915	46,509	47,450	45,571	42,489
売上総利益(完成工事総利益)	Gross profit	5,575	5,580	5,486	5,306	5,542
販売費及び一般管理費	Selling, general and administrative expenses	2,980	3,264	3,390	3,256	3,530
営業利益	Operating income	2,595	2,316	2,095	2,050	2,011
営業外収益	Non-operating income	205	351	364	290	212
営業外費用	Non-operating expenses	47	159	18	16	18
経常利益	Ordinary income	2,753	2,508	2,442	2,324	2,205
特別利益	Extraordinary income	69	5	324	17	545
特別損失	Extraordinary loss	20	420	360	94	371
税金等調整前当期純利益	Income before income taxes	2,802	2,093	2,407	2,247	2,379
法人税、住民税及び事業税	Income taxes-current	1,036	795	1,092	764	859
法人税等調整額	Income taxes-deferred	159	128	12	207	152
少数株主利益	Minority interests income	4	▲67	112	48	23
当期純利益	Net income	1,601	1,237	1,189	1,225	1,344

連結キャッシュフロー計算書 Consolidated Statements of Cash Flows

		(単位:百万円Unit:Millions of yen)				
		2007/3	2008/3	2009/3	2010/3	2011/3
営業活動によるキャッシュ・フロー	Cash flows from operating activities	656	3,704	1,297	325	4,764
投資活動によるキャッシュ・フロー	Cash flows from investment activities	△ 1,213	△ 4,783	△ 658	3,765	△6,742
財務活動によるキャッシュ・フロー	Cash flows from financing activities	△ 422	△ 966	△ 629	△ 439	△ 861
現金及び現金同等物の増減額	Net increase (decrease) in cash and cash equivalents	△ 979	△ 2,047	9	3,650	△2,839
現金及び現金同等物の期首残高	Cash and cash equivalents at beginning of year	5,693	5,223	3,176	3,186	6,836
現金及び現金同等物の期末残高	Cash and cash equivalents at end of year	5,223	3,176	3,186	6,836	3,996

貸借対照表 [資産の部] Non-Consolidated Balance Sheets [Assets]

		(単位:百万円/Unit: Millions of yen)				
		2007/3	2008/3	2009/3	2010/3	2011/3
資産の部	Assets					
流動資産	Current assets	30,199	29,977	30,624	31,630	29,421
現金預金	Cash and cash equivalents	3,081	2,280	2,033	1,910	2,643
受取手形	Notes receivable	658	176	210	401	129
完成工事未収入金	Accounts receivable-trade	11,303	10,219	12,294	15,641	13,627
有価証券	Marketable securities	6,880	9,316	9,123	9,416	7,436
未成工事支出金	Construction projects in progress	7,168	6,743	5,769	2,937	2,794
材料貯蔵品	Stock of materials	78	113	-	-	-
繰延税金資産	Deferred tax assets	786	822	852	825	915
その他	Other	240	304	341	497	1,874
固定資産	Fixed assets	29,284	26,794	25,880	24,958	27,349
有形固定資産	Property and equipment	14,545	14,141	13,764	14,222	17,030
建物・構築物	Buildings and structures	5,831	5,484	5,108	5,595	5,546
機械・運搬具	Machinery and vehicles	270	220	203	148	103
工具器具・備品	Tools and equipment	318	287	349	389	364
土地	Land	8,123	8,123	7,795	7,795	10,436
リース資産	Lease	-	-	57	254	336
建設仮勘定	Construction in progress	-	24	248	39	242
無形固定資産	Intangible fixed assets	184	170	143	130	87
ソフトウェア	Software	161	141	119	103	63
その他	Other	22	27	24	27	23
投資その他の資産	Investments and other assets	14,555	12,482	11,972	10,604	10,231
投資有価証券	Investment securities	12,565	9,812	8,519	7,898	4,549
関係会社株式他	Investment securities of affiliated companies other	236	236	236	236	2,179
長期貸付金	Long-term loans receivable	1,151	1,230	1,525	1,389	1,301
繰延税金資産	Deferred tax assets	-	973	1,468	862	1,839
その他	Other	691	316	309	311	425
貸倒引当金	Allowance for doubtful accounts	△ 89	△ 86	△ 86	△ 92	△ 64
資産合計	Total assets	59,483	56,771	56,505	56,589	56,770

貸借対照表 [負債/資本の部] Non-Consolidated Balance Sheets [Liabilities/Shareholders' Equity]

(単位:百万円/Unit:Millions of yen)

		2007/3	2008/3	2009/3	2010/3	2011/3
負債の部	Liabilities					
流動負債	Current liabilities	9,403	8,848	8,501	8,112	9,190
工事未払金	Accounts payable-trade	5,375	4,669	4,697	4,545	5,005
短期借入金	Short-term borrowings	300	300	300	300	-
リース債務	Lease	-	-	16	50	104
未払費用	Accrued expense	1,343	1,378	1,400	1,424	1,520
未払法人税等	Accrued income taxes	409	449	700	518	664
未成工事受入金	Advances received on construction projects in progress	619	1,047	309	112	162
完成工事補償引当金	Allowance for compensation for construction damages	16	15	21	24	38
工事損失引当金	Allowance for losses on construction contracts	280	291	412	477	571
その他	Other	1,056	695	642	659	1,122
固定負債	Long-term liabilities	6,055	5,610	5,905	5,400	5,694
リース債務	Lease	-	-	46	160	228
退職給付引当金	Accrued retirement benefits	5,861	5,512	5,772	5,155	5,225
役員退職慰労引当金	Allowance for retirement benefits for directors and auditors	60	62	-	-	-
資産除去債務	Asset removal debt	-	-	-	-	153
その他	Other	132	35	86	84	86
負債合計	Total liabilities	15,459	14,458	14,407	13,513	14,884
純資産の部	Net assets					
資本金	Common stock	2,881	2,881	2,881	2,881	2,881
資本剰余金	Capital surplus	3,727	3,728	3,729	3,729	3,730
利益剰余金	Retained earnings	34,208	34,707	35,148	35,678	36,389
自己株式	Treasury stock	△ 658	△ 966	△ 973	△ 980	△ 986
株主資本合計	Total shareholders' equity	40,158	40,351	40,785	41,308	42,014
評価・換算差額等合計	Total valuation and translation adjustments	3,866	1,962	1,311	1,767	△ 129
純資産合計	Total net assets	44,024	42,313	42,097	43,075	41,885
負債・純資産(資本)合計	Total liabilities, net assets (Shareholders' equity)	59,483	56,771	56,505	56,589	56,770

損益計算書 Non-Consolidated Statements of Operations

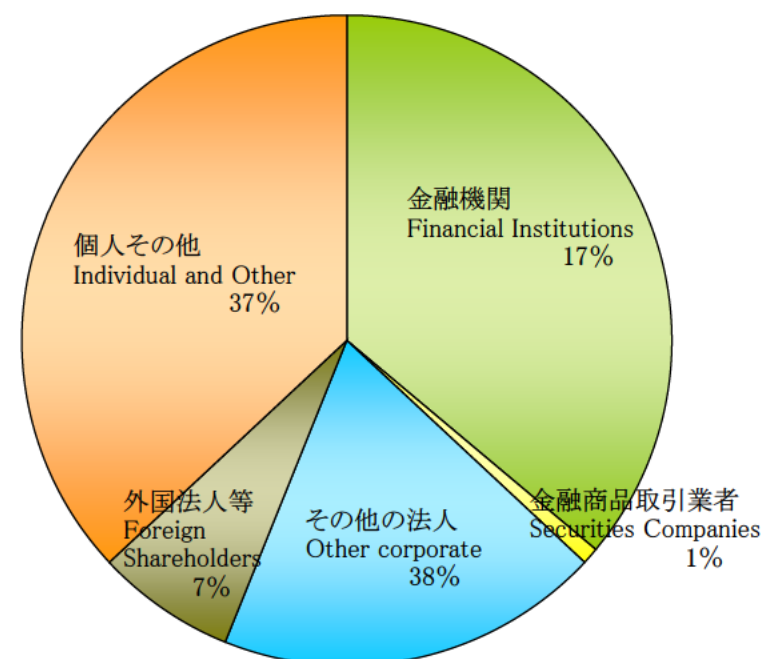
(単位: 百万円/Unit: Millions of yen)

		2007/3	2008/3	2009/3	2010/3	2011/3
売上高 (完成工事高)	Net sales	46,807	49,116	50,126	47,037	44,756
売上原価 (完成工事原価)	Cost of sales	41,784	44,360	45,741	42,656	40,089
売上総利益(完成工事総利益)	Gross profit	5,022	4,755	4,384	4,381	4,666
販売費及び一般管理費	Selling, general and administrative expenses	2,531	2,702	2,805	2,642	2,938
営業利益	Operating income	2,490	2,053	1,579	1,738	1,727
営業外収益	Non-operating income	216	297	320	253	244
営業外費用	Non-operating expenses	35	141	4	4	3
経常利益	Ordinary income	2,671	2,210	1,895	1,987	1,969
特別利益	Extraordinary income	54	-	321	-	542
特別損失	Extraordinary loss	4	140	342	94	384
税引前当期純利益	Income before income taxes	2,721	2,069	1,874	1,892	2,127
法人税、住民税及び事業税	Income taxes-current	974	709	986	518	794
法人税等調整額	Income taxes-deferred	184	203	△ 78	318	96
当期純利益	Net income	1,562	1,156	966	1,055	1,236

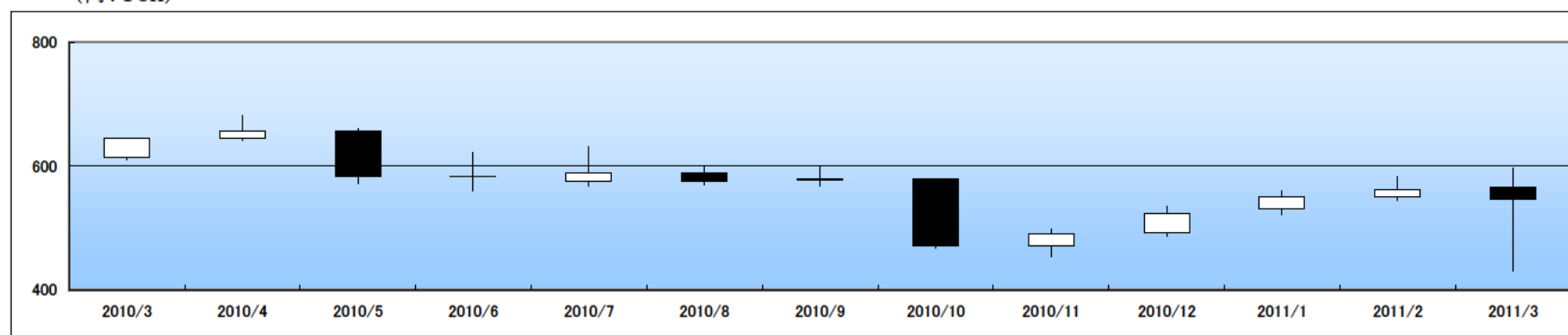
会社概況 Corporate Information

商号 Company Name	株式会社東京エネシス TOKYO ENERGY & SYSTEMS INC.
本店所在地 Address of Head Office	〒105-0004 東京都港区新橋六丁目9番7号 9-7 Shimbashi 6-chome, Minato-ku, Tokyo, Japan
設立 Established	1947年(昭和22年)8月14日 August 14, 1947
資本金 Capital	28億81百万円 2,881millions of yen
株式上市 Exchange	東京証券取引所 市場第一部(証券コード1945) Tokyo Stock Exchange, First Section (Code: 1945)
従業員数 Number of Employees	1,464名(H23.3.31現在) 1,464
ホームページアドレス URL	http://www.qtes.co.jp/ http://www.qtes.co.jp/

所有者別分布状況 Shareholders by Category



株価の推移 Stock Price Range
(円:Yen)



株式会社東京エネシス お客様本部 広報室

TOKYO ENERGY & SYSTEMS INC.

Public Relations Division

TEL 03-6371-5260

FAX 03-3434-0951

URL <http://www.qtes.co.jp>