

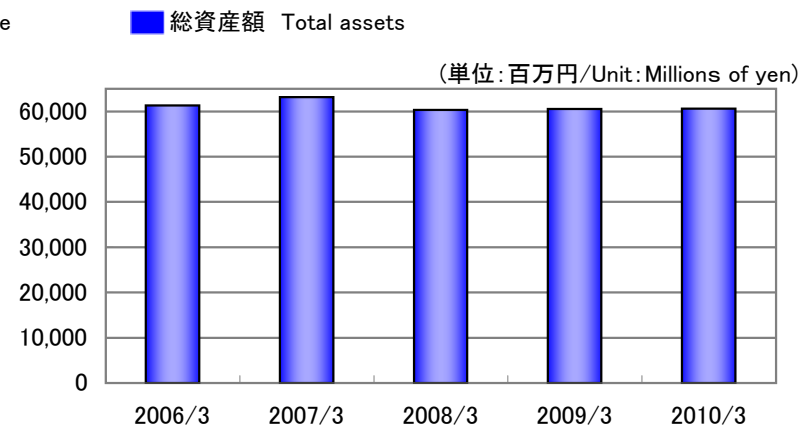
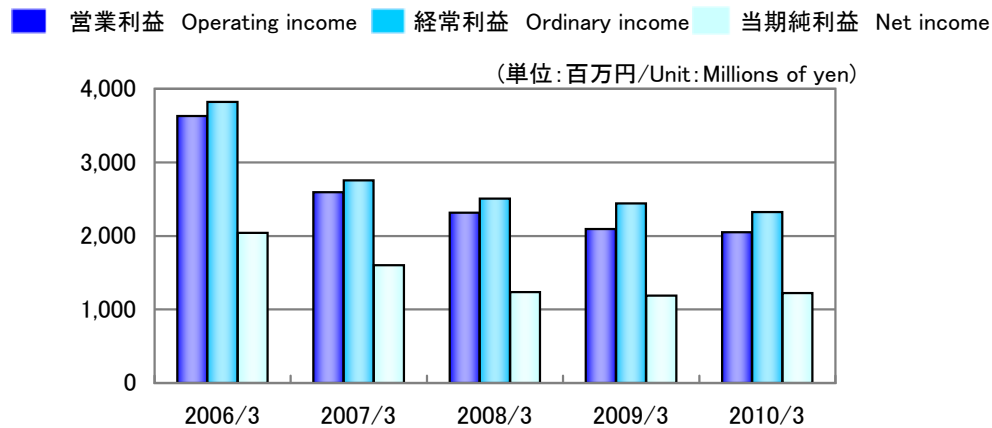
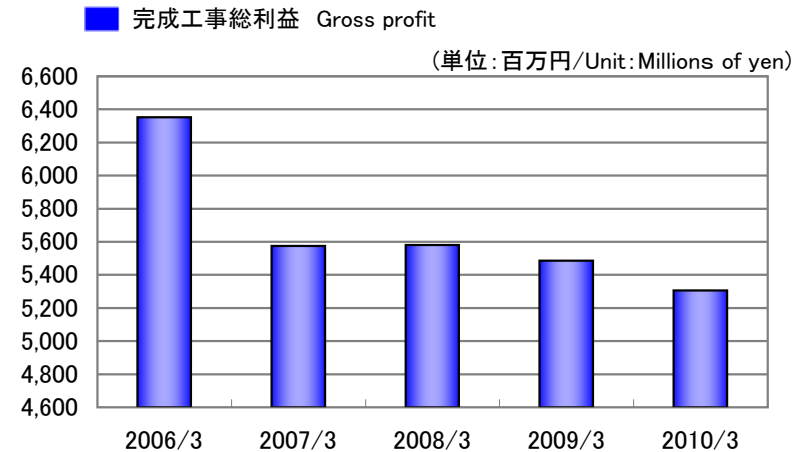
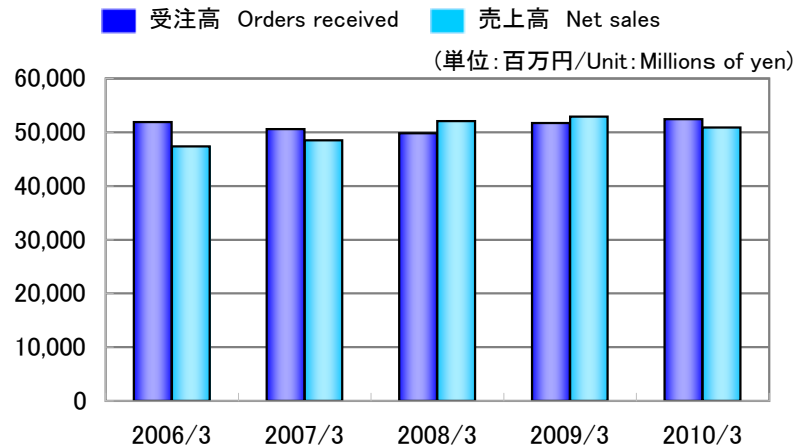
Fact Book 2009

株式会社東京エネシス
TOKYO ENERGY & SYSTEMS INC.

Fact Sheet 2009 目次

業績ハイライト(連結) Financial Highlights (Consolidated)	1
業績ハイライト(個別) Financial Highlights (Non-Consolidated)	2
部門別受注高(連結) Orders Received by Business Category (Consolidated)	3
部門別受注高(個別) Orders Received by Business Category (Non-Consolidated)	4
部門別売上高(連結) Net Sales by Business Category (Consolidated)	5
部門別売上高(個別) Net Sales by Business Category (Non-Consolidated)	6
得意先別売上高(個別) Net Sales by Client (Non-Consolidated)	7
収益性指標(連結) Profitability (Consolidated)	8
安全性指標(連結) Stability (Consolidated)	9
従業員1人当たり指標(連結) Per Employee (Consolidated)	10
1株当たり指標(個別) Per Share Data (Non-Consolidated)	11
その他指標(連結) Other Data (Consolidated)	12
その他指標(個別) Other Data (Non-Consolidated)	13
連結貸借対照表 [資産の部] Consolidated Balance Sheets [Assets]	14
連結貸借対照表 [負債/資本の部] Consolidated Balance Sheets [Liabilities/Shareholders' Equity]	15
連結損益計算書 Consolidated Statements of Operations	16
連結キャッシュフロー計算書 Consolidated Statements of Cash Flows	16
貸借対照表 [資産の部] Non-Consolidated Balance Sheets [Assets]	17
貸借対照表 [負債/資本の部] Non-Consolidated Balance Sheets [Liabilities/Shareholders' Equity]	18
損益計算書 Non-Consolidated Statements of Operations	19
会社概況 Corporate Information	20

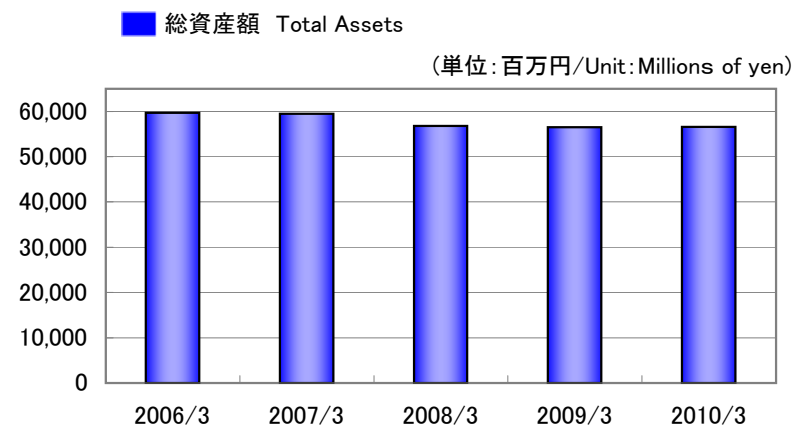
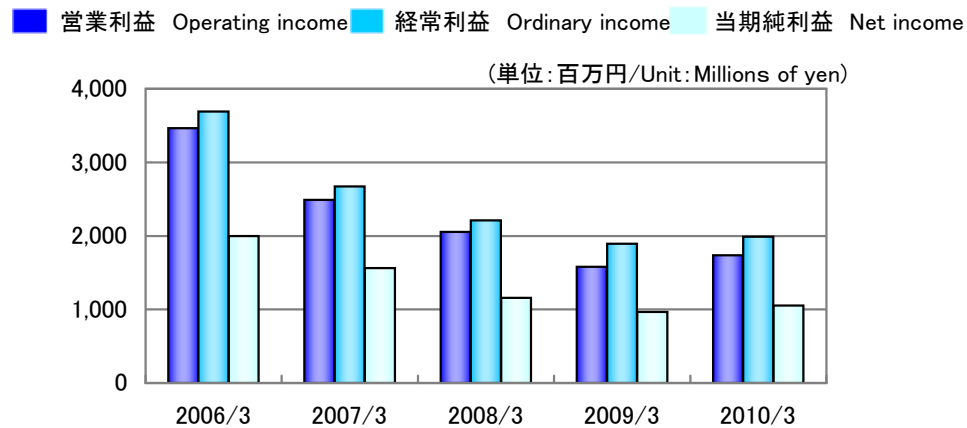
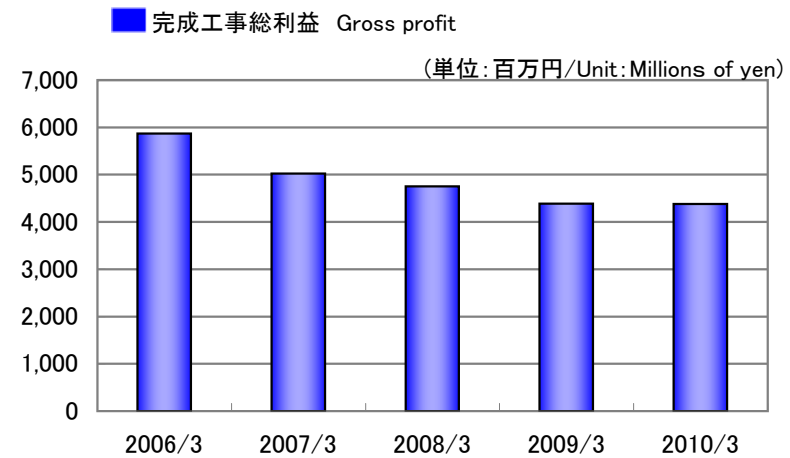
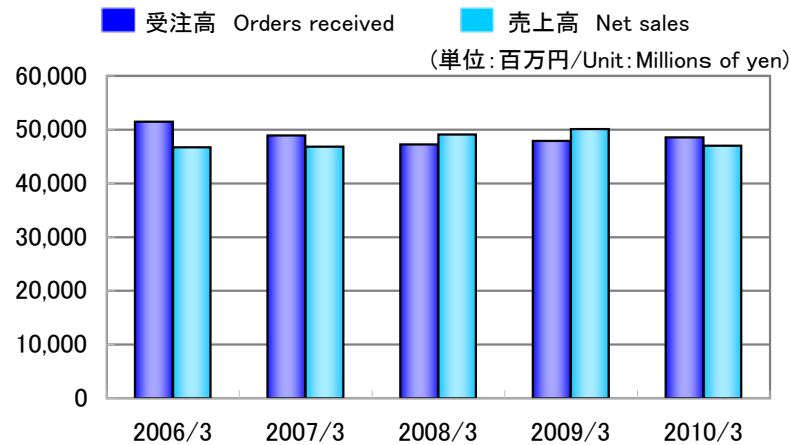
業績ハイライト(連結) Financial Highlights (Consolidated)



(単位: 百万円/Unit: Millions of yen)

		2006/3	2007/3	2008/3	2009/3	2010/3
受注高	Orders received	51,907	50,568	49,812	51,702	52,419
売上高 (完成工事高)	Net sales	47,354	48,490	52,090	52,936	50,878
完成工事総利益	Gross profit	6,353	5,575	5,580	5,486	5,306
営業利益	Operating income	3,631	2,595	2,316	2,095	2,050
経常利益	Ordinary income	3,822	2,753	2,508	2,442	2,324
当期純利益	Net income	2,043	1,601	1,237	1,189	1,225
総資産額	Total assets	61,331	63,138	60,364	60,557	60,612

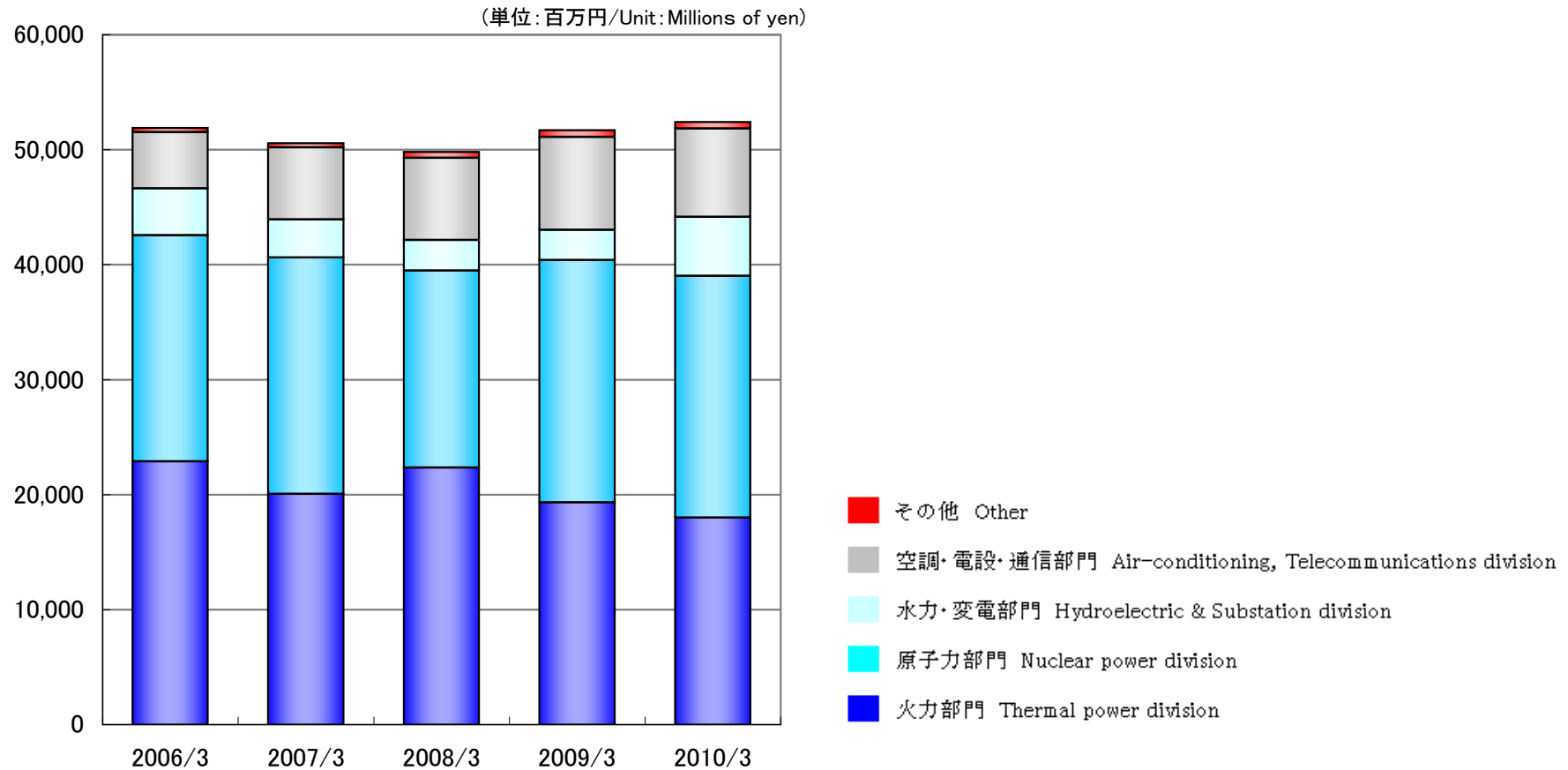
業績ハイライト(個別) Financial Highlights (Non-Consolidated)



(単位: 百万円/Unit: Millions of yen)

		2006/3	2007/3	2008/3	2009/3	2010/3
受注高	Orders received	51,484	48,940	47,244	47,877	48,549
売上高 (完成工事高)	Net sales	46,736	46,807	49,116	50,126	47,037
完成工事総利益	Gross profit	5,867	5,022	4,755	4,384	4,381
営業利益	Operating income	3,464	2,490	2,053	1,579	1,738
経常利益	Ordinary income	3,690	2,671	2,210	1,895	1,987
当期純利益	Net income	1,996	1,562	1,156	966	1,055
総資産額	Total assets	59,668	59,483	56,771	56,505	56,589

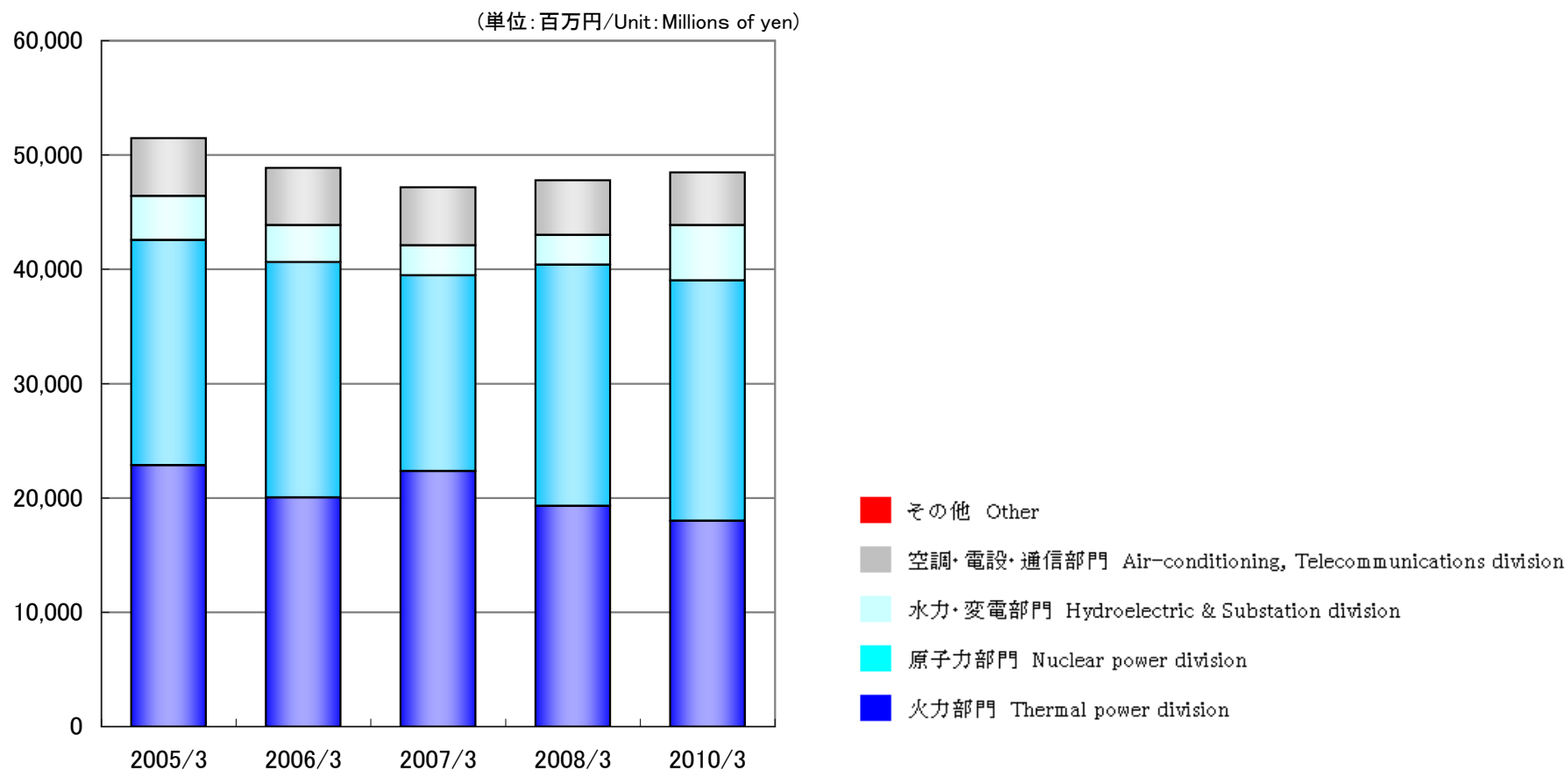
部門別受注高(連結) Orders Received by Business Category (Consolidated)



(単位: 百万円/Unit: Millions of yen)

		2006/3	2007/3	2008/3	2009/3	2010/3
火力部門	Thermal power division	22,885	20,055	22,351	19,318	18,005
原子力部門	Nuclear power division	19,687	20,571	17,135	21,090	21,033
水力・変電部門	Hydroelectric & Substation division	4,076	3,312	2,664	2,610	5,115
空調・電設・通信部門	Air-conditioning, Telecommunications division	4,871	6,271	7,130	8,082	7,694
その他部門	Other	385	357	531	600	570
合計	Total	51,907	50,568	49,812	51,702	52,419

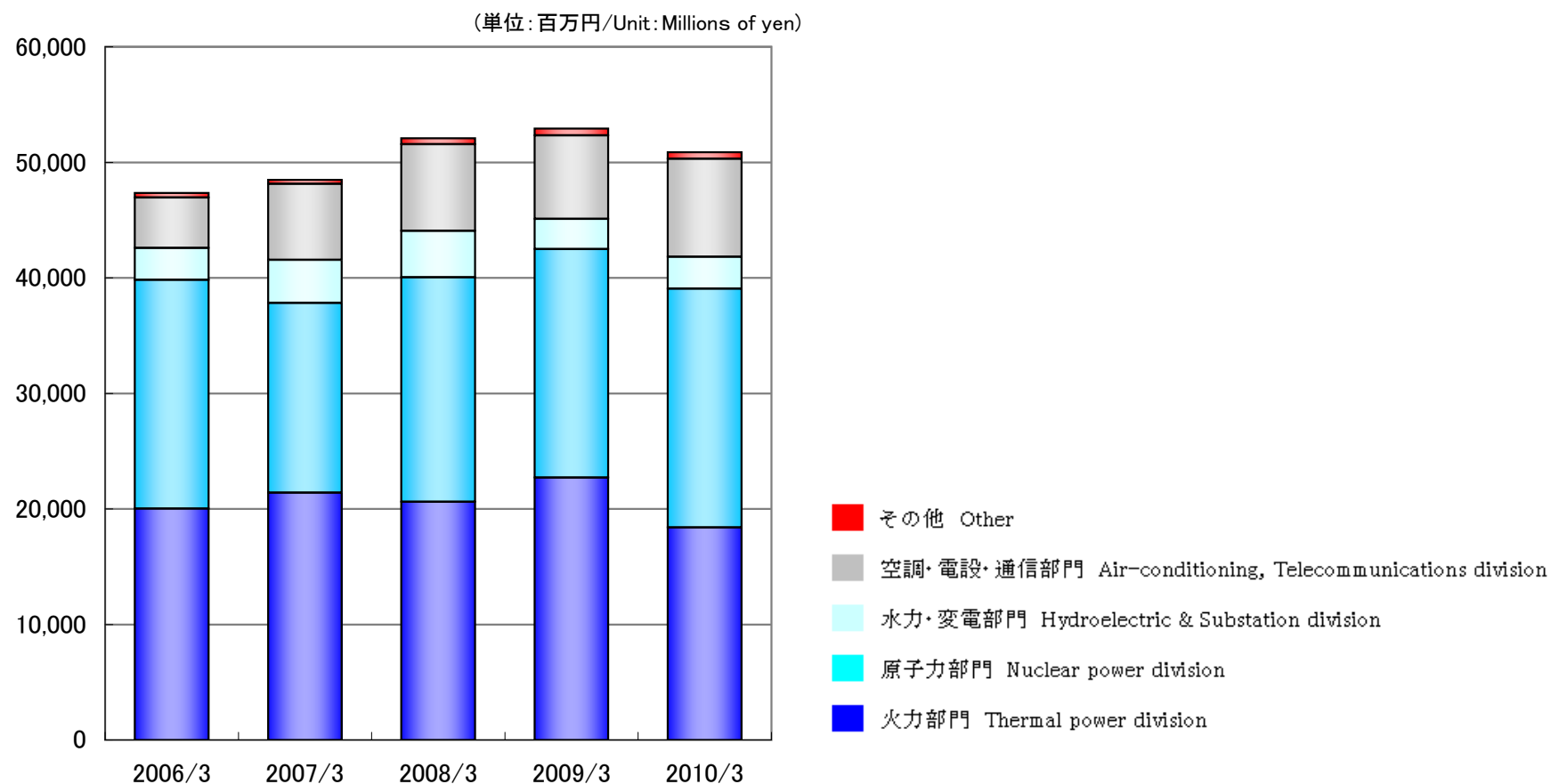
部門別受注高(個別) Orders Received by Business Category (Non-Consolidated)



(単位: 百万円/Unit: Millions of yen)

		2005/3	2006/3	2007/3	2008/3	2010/3
火力部門	Thermal power division	22,868	20,046	22,340	19,312	18,000
原子力部門	Nuclear power division	19,687	20,571	17,135	21,090	21,033
水力・変電部門	Hydroelectric & Substation division	3,874	3,247	2,627	2,592	4,835
空調・電設・通信部門	Air-conditioning, Telecommunications division	5,054	5,015	5,066	4,811	4,610
その他	Other	-	59	74	70	70
合計	Total	51,484	48,940	47,244	47,877	48,549

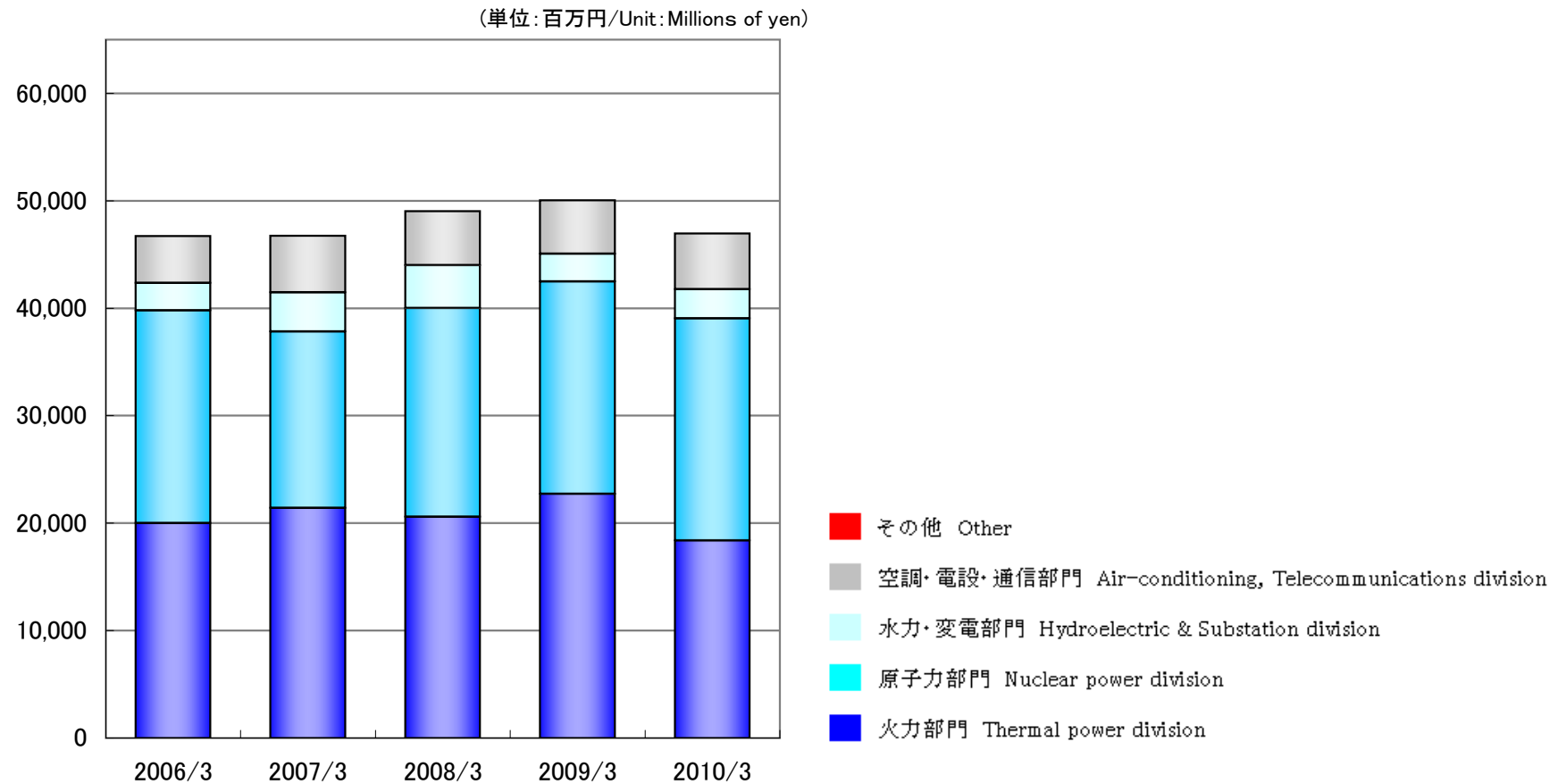
部門別売上高(連結) Net Sales by Business Category (Consolidated)



(単位: 百万円/Unit: Millions of yen)

		2006/3	2007/3	2008/3	2009/3	2010/3
火力部門	Thermal power division	20,024	21,418	20,606	22,724	18,388
原子力部門	Nuclear power division	19,797	16,422	19,431	19,767	20,673
水力・変電部門	Hydroelectric & Substation division	2,776	3,718	4,032	2,605	2,757
空調・電設・通信部門	Air-conditioning, Telecommunications division	4,369	6,572	7,488	7,238	8,487
その他部門	Other	385	357	531	600	570
合計	Total	47,354	48,490	52,090	52,936	50,878

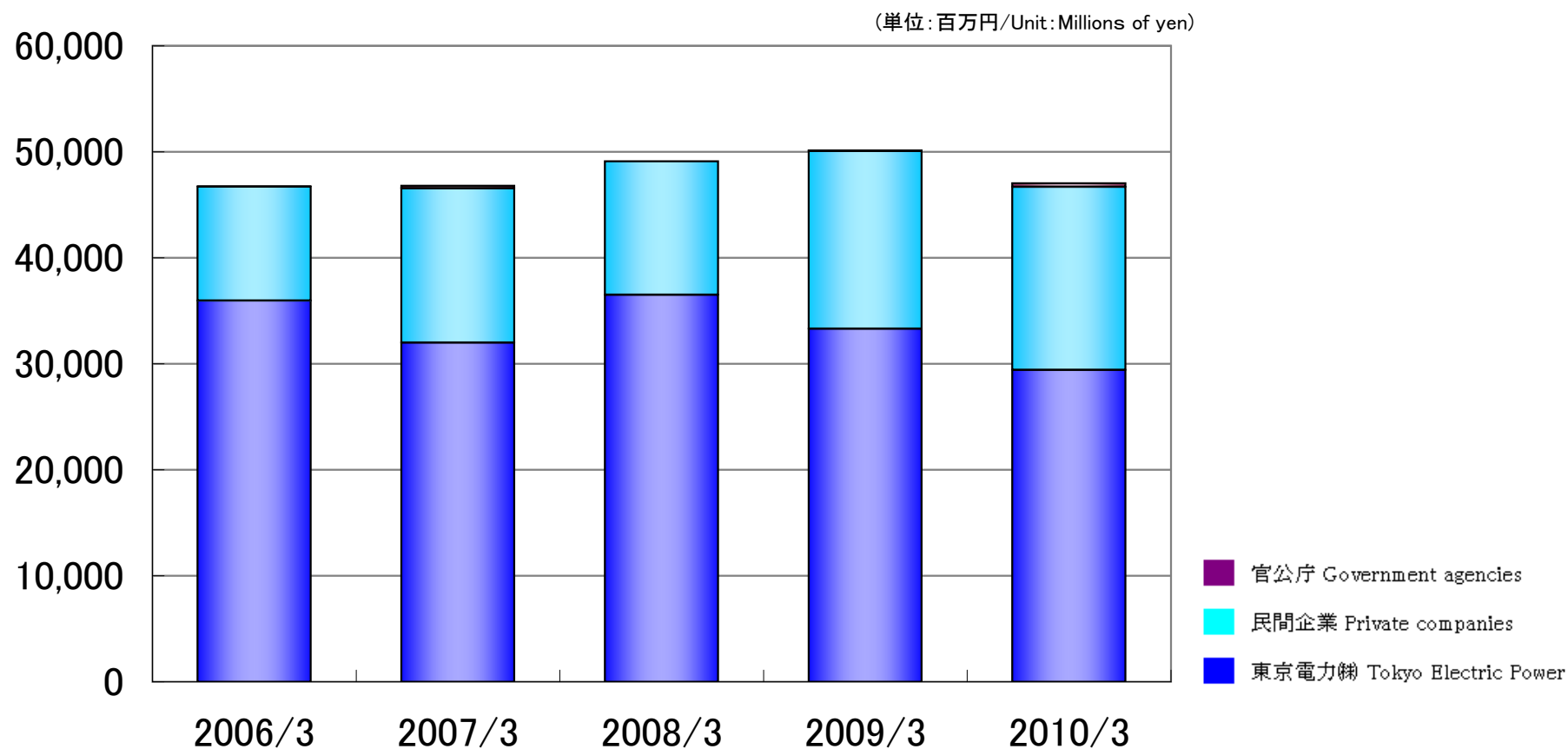
部門別売上高(個別) Net Sales by Business Category (Non-Consolidated)



(単位: 百万円/Unit: Millions of yen)

		2006/3	2007/3	2008/3	2009/3	2010/3
火力部門	Thermal power division	20,006	21,410	20,585	22,717	18,384
原子力部門	Nuclear power division	19,797	16,422	19,431	19,767	20,673
水力・変電部門	Hydroelectric & Substation division	2,559	3,639	3,986	2,583	2,709
空調・電設・通信部門	Air-conditioning, Telecommunications division	4,372	5,275	5,038	4,987	5,199
その他	Other	-	59	74	70	70
合計	Total	46,736	46,807	49,116	50,126	47,037

得意先別売上高(個別) Net Sales by Client (Non-Consolidated)

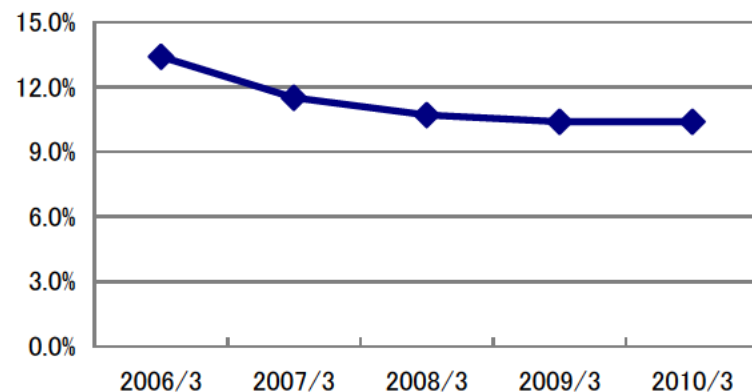


(単位: 百万円/Unit: Millions of yen)

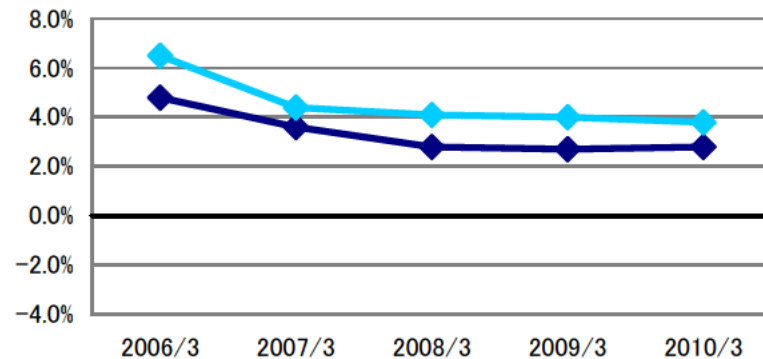
		2006/3	2007/3	2008/3	2009/3	2010/3
東京電力(株)	Tokyo Electric Power	35,956	32,004	36,518	33,317	29,414
民間企業	Private companies	10,776	14,565	12,596	16,756	17,272
官公庁	Government agencies	4	238	1	53	351
合計	Total	46,736	46,807	49,116	50,126	47,037

収益性指標(連結) Profitability (Consolidated)

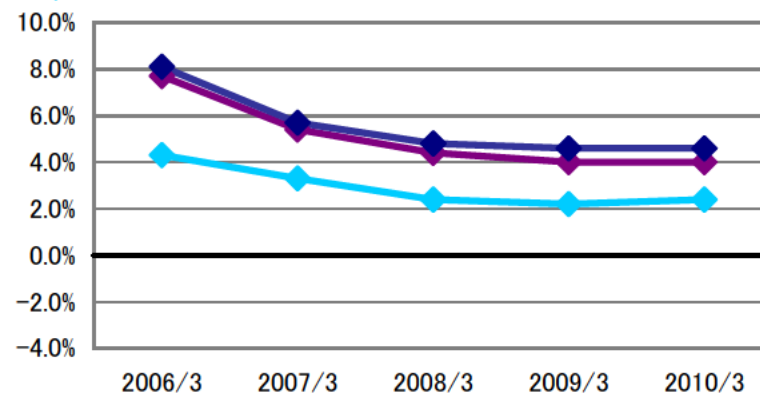
◆ 売上高総利益率(%) Ratio of gross profit to net sales(%)



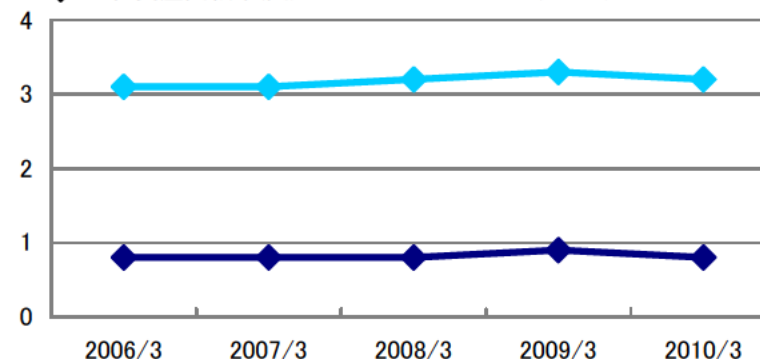
◆ 自己資本利益率(%) Return on equity(%)
◆ 総資産経常利益率(%) Return on total assets(%)



◆ 売上高営業利益率(%) Ratio of operating income to net sales(%)
◆ 売上高経常利益率(%) Ratio of ordinary income to net sales(%)
◆ 売上高当期純利益率(%) Ratio of net income to net sales(%)

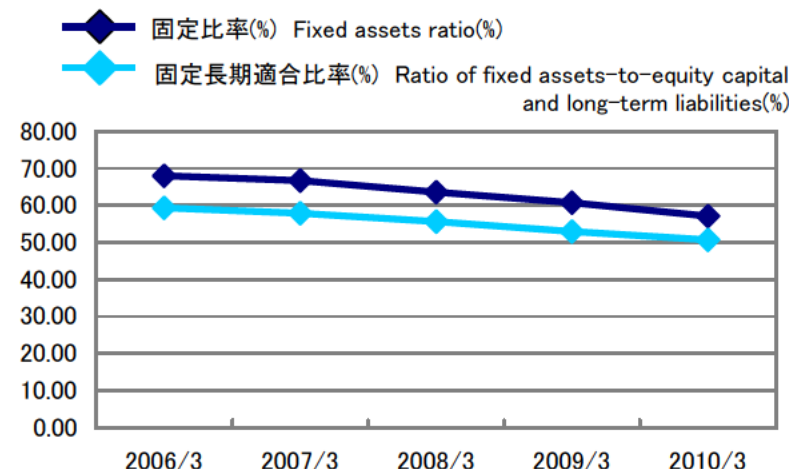
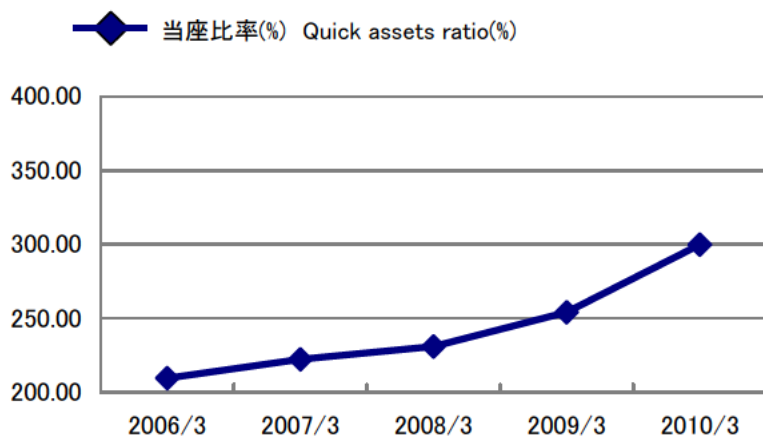
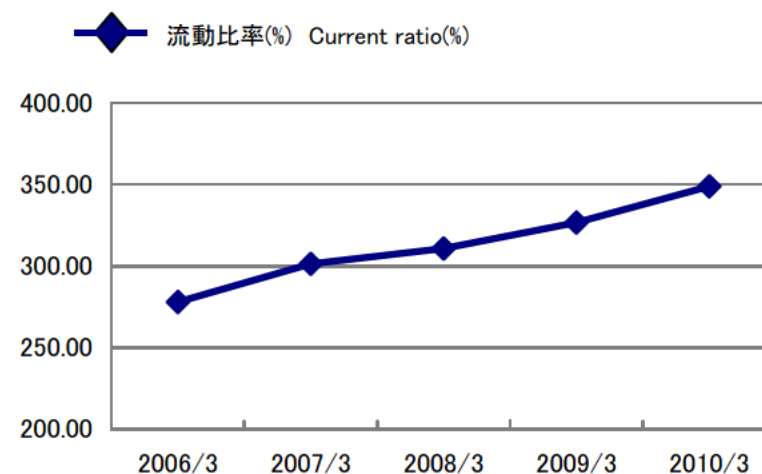
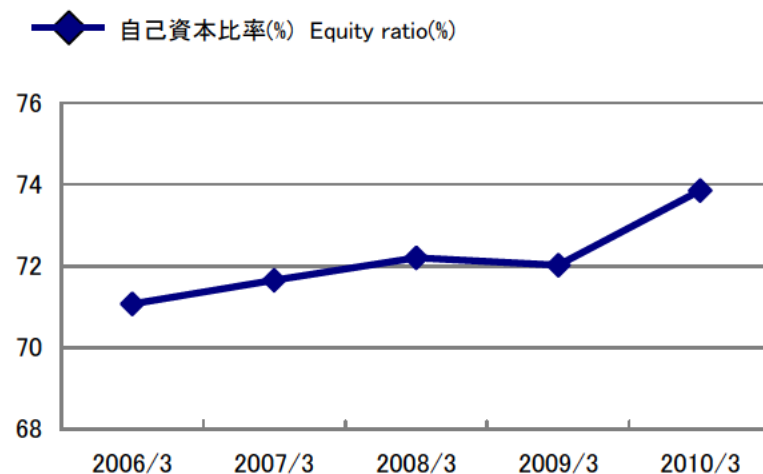


◆ 有形固定資産回転率(回) Tangible fixed assets turnover(Times)
◆ 総資産回転率(回) Total assets turnover(Times)



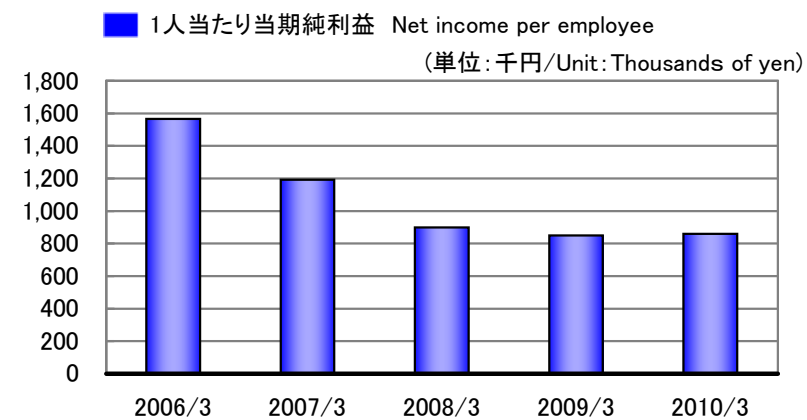
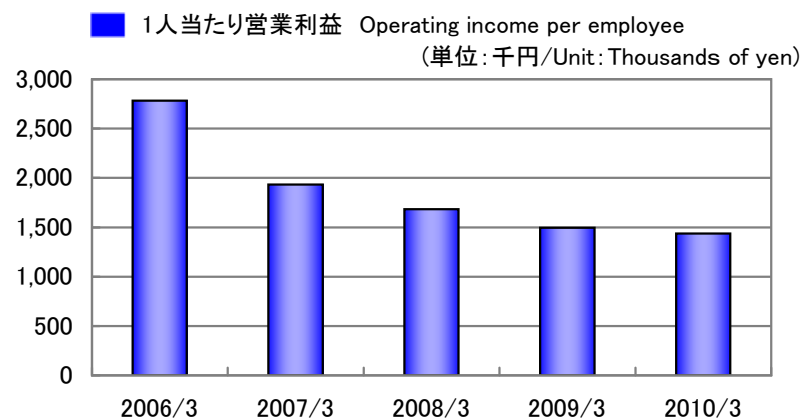
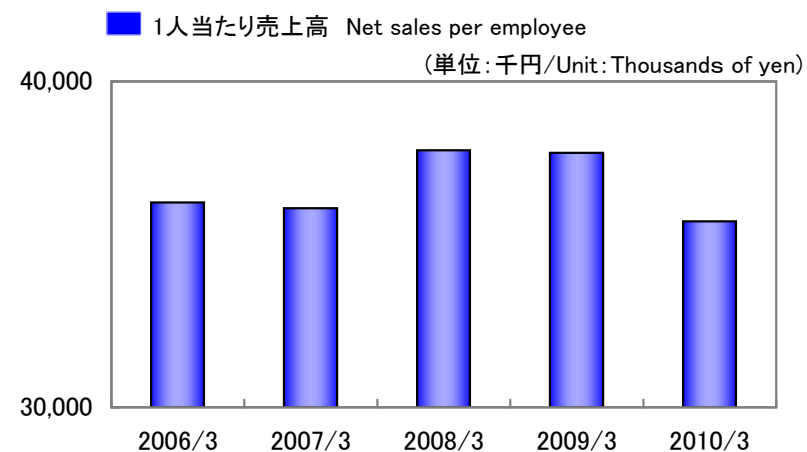
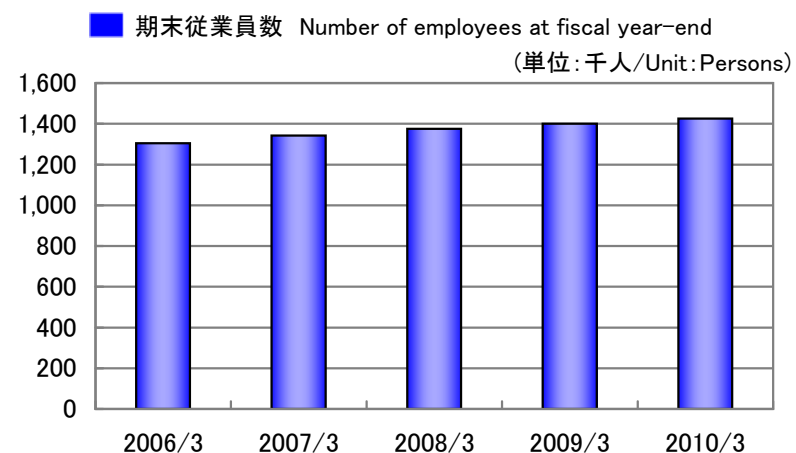
		2006/3	2007/3	2008/3	2009/3	2010/3
売上高総利益率(%)	Ratio of gross profit to net sales (%)	13.4%	11.5%	10.7%	10.4%	10.4%
売上高営業利益率(%)	Ratio of operating income to net sales (%)	7.7%	5.4%	4.4%	4.0%	4.0%
売上高経常利益率(%)	Ratio of ordinary income to net sales (%)	8.1%	5.7%	4.8%	4.6%	4.6%
売上高当期純利益率(%)	Ratio of net income to net sales (%)	4.3%	3.3%	2.4%	2.2%	2.4%
自己資本利益率(%)	Return on equity (%)	4.8%	3.6%	2.8%	2.7%	2.8%
総資産経常利益率(%)	Return on total assets (%)	6.5%	4.4%	4.1%	4.0%	3.8%
総資産回転率(回)	Total assets turnover (Times)	0.8回	0.8回	0.8回	0.9回	0.8回
有形固定資産回転率(回)	Tangible fixed assets turnover (Times)	3.1回	3.1回	3.2回	3.3回	3.2回

安全性指標(連結) Stability (Consolidated)



		2006/3	2007/3	2008/3	2009/3	2010/3
自己資本比率(%)	Equity ratio (%)	71.07	71.65	72.24	72.02	73.85
流動比率(%)	Current ratio (%)	277.89	301.20	310.69	326.53	348.83
当座比率(%)	Quick assets ratio (%)	209.34	222.20	230.86	254.00	299.84
固定比率(%)	Fixed assets ratio (%)	67.95	66.67	63.55	60.69	57.06
固定長期適合比率(%)	Ratio of fixed assets-to-equity capital and long-term liabilities (%)	59.33	57.90	55.62	52.96	50.71

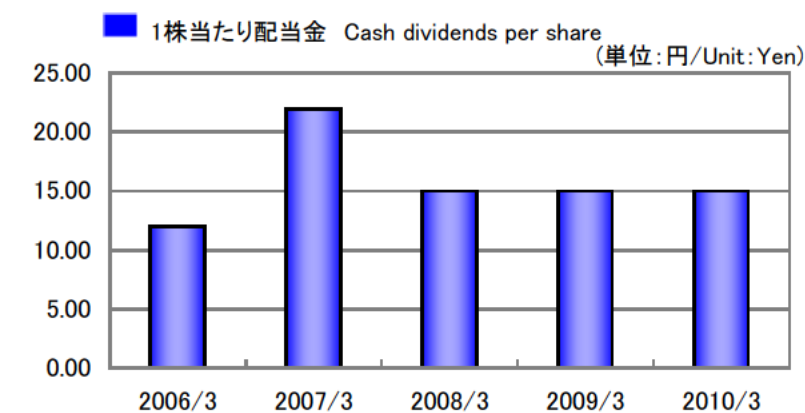
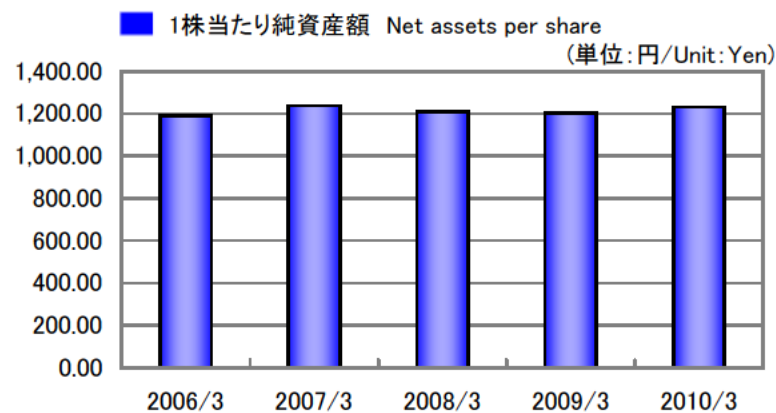
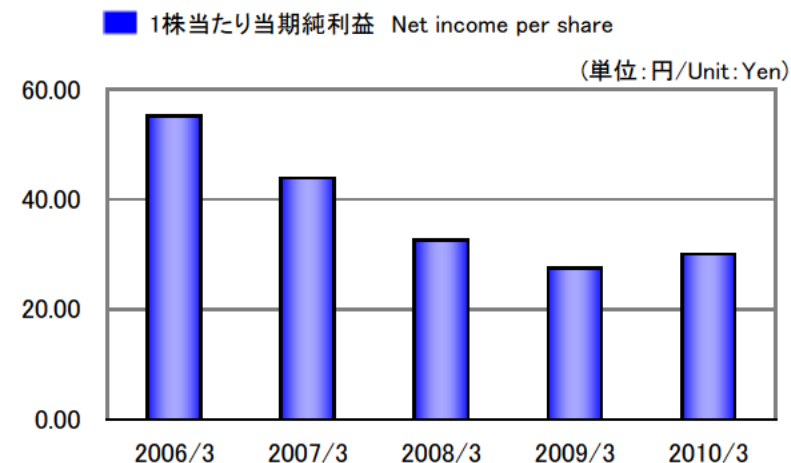
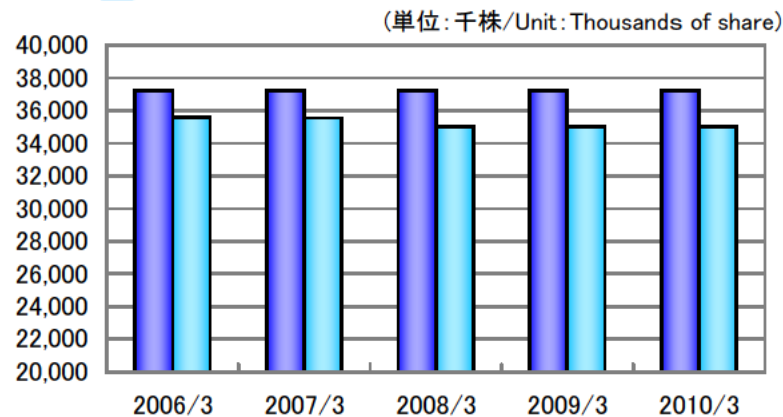
従業員1人当たり指標(連結) Per Employee (Consolidated)



		2006/3	2007/3	2008/3	2009/3	2010/3
期末従業員数(人)	Number of employees at fiscal year-end (Persons)	1,305	1,343	1,375	1,400	1,425
1人当たり売上高(千円)	Net sales per employee (Thousands of yen)	36,287	36,106	37,884	37,811	35,704
1人当たり営業利益(千円)	Operating income per employee (Thousands of yen)	2,782	1,932	1,684	1,496	1,438
1人当たり当期純利益(千円)	Net income per employee (Thousands of yen)	1,566	1,192	900	849	860

1株当たり指標(個別) Per Share Data (Non-Consolidated)

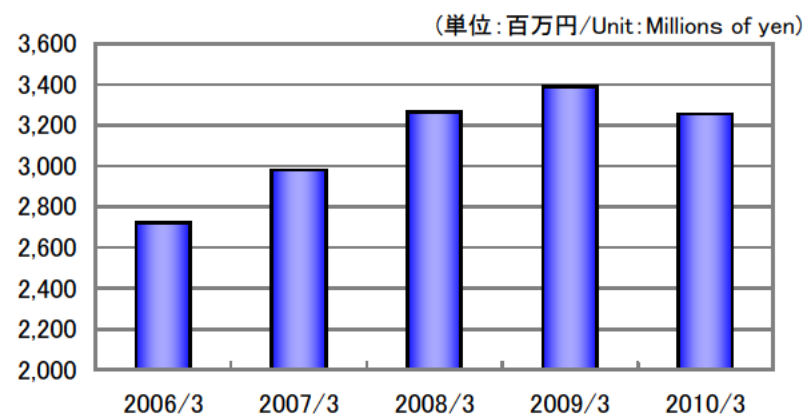
■ 発行済株式総数 Number of outstanding shares issued
 ■ 自己株式控除後発行済株式総数 After deduction from treasury stock



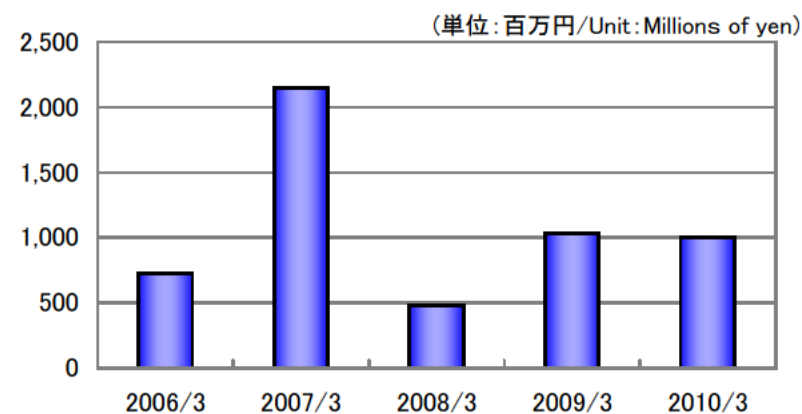
		2006/3	2007/3	2008/3	2009/3	2010/3
発行済株式総数(千株)	Number of outstanding shares issued (Thousands of share)	37,261	37,261	37,261	37,261	37,261
(自己株式控除後)	After deduction from treasury stock	35,576	35,548	35,030	35,022	35,012
1株当たり当期純利益(円)	Net income per share (Yen)	55.24	43.93	32.63	27.59	30.14
1株当たり純資産額(円)	Net assets per share (Yen)	1,190.91	1,238.44	1,207.93	1,202.02	1,230.31
1株当たり配当金(円)	Cash dividends per share (Yen)	12.00	22.00	15.00	15.00	15.00

その他指標(連結) Other Data (Consolidated)

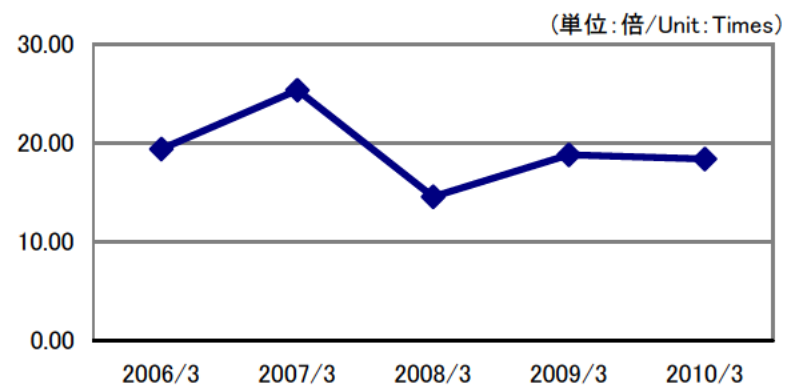
■ 販売費及び一般管理費 Selling, general and administrative expenses



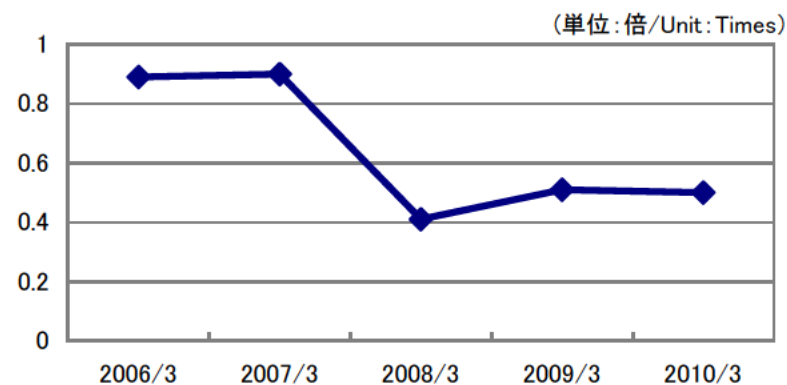
■ 設備投資額 Capital investment



■ 株価収益率 Price earnings ratio



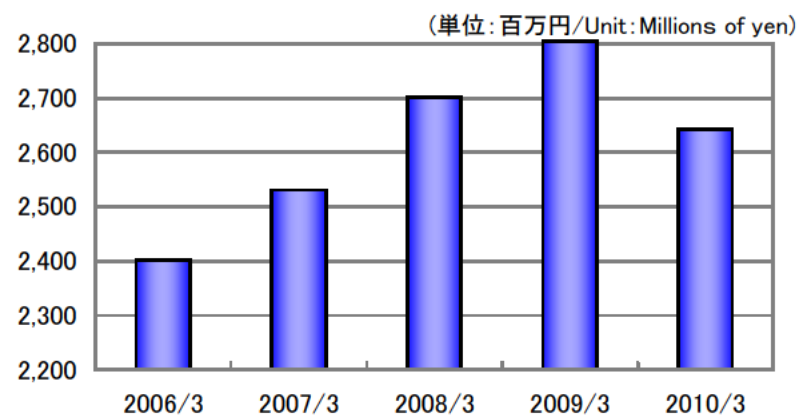
■ 株価純資産倍率 Price book-value ratio



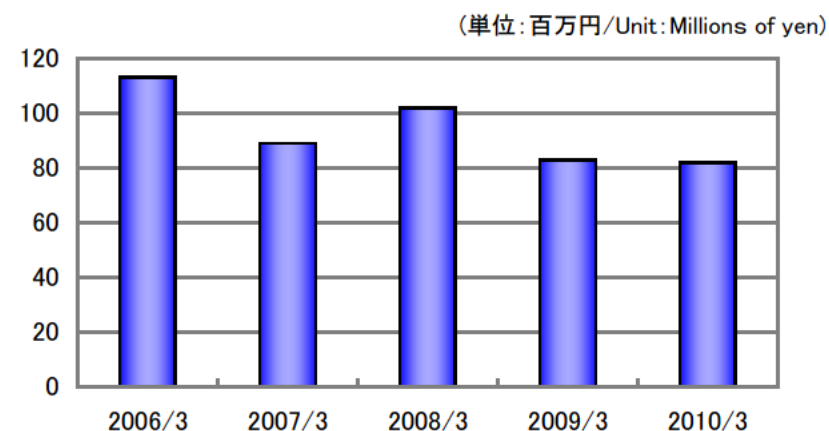
		2006/3	2007/3	2008/3	2009/3	2010/3
販売費及び一般管理費(百万円)	Selling, general and administrative expenses (Millions of yen)	2,721	2,980	3,264	3,390	3,256
設備投資額(百万円)	Capital investment (Millions of yen)	726	2,149	484	1,035	1,006
株価収益率(倍)	Price earnings ratio (Times)	19.40	25.36	14.59	18.82	18.39
株価純資産倍率(倍)	Price book-value ratio (Times)	0.89	0.90	0.41	0.51	0.50

その他指標(個別) Other Data (Non-Consolidated)

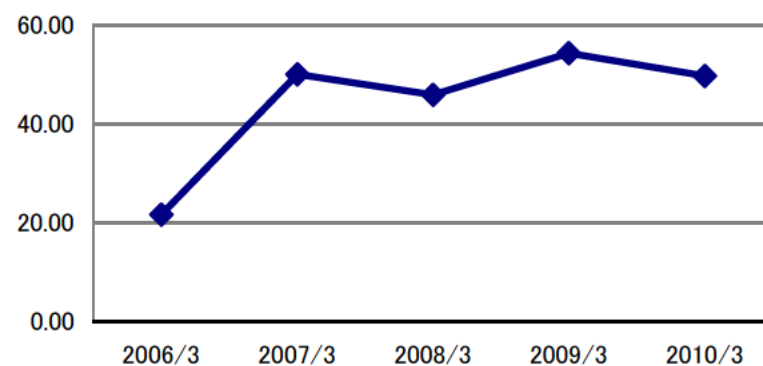
■ 販売費及び一般管理費 Selling, general and administrative expenses



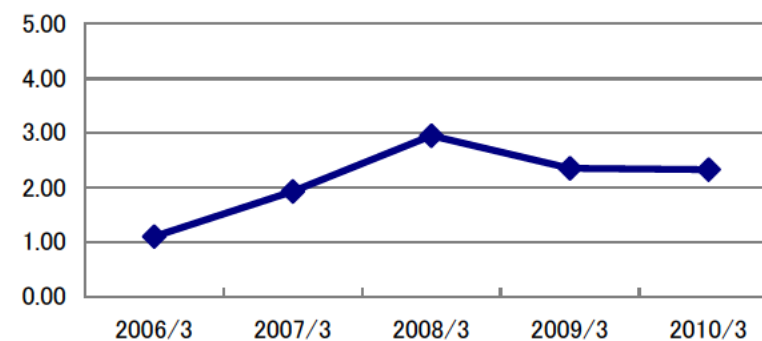
■ 研究開発費 Research and development expenditure



■ 配当性向(%) Dividend payout ratio(%)



■ 配当利回り(%) Dividend yield(%)



		2006/3	2007/3	2008/3	2009/3	2010/3
販売費及び一般管理費(百万円)	Selling, general and administrative expenses (Millions of yen)	2,402	2,531	2,702	2,805	2,642
研究開発費(百万円)	Research and development expenditure (Millions of yen)	113	89	102	83	82
配当性向(%)	Dividend payout ratio (%)	21.72	50.08	45.97	54.37	49.77
配当利回り(%)	Dividend yield (%)	1.10	1.93	2.95	2.35	2.33

連結貸借対照表 [資産の部] Consolidated Balance Sheets [Assets]

(単位:百万円/Unit:Millions of yen)

		2006/3	2007/3	2008/3	2009/3	2010/3
資産の部	Assets					
流動資産	Current assets	31,712	32,978	32,653	33,999	35,073
現金預金	Cash and cash equivalents	4,793	4,735	3,692	4,065	3,850
受取手形・完成工事未収入金	Notes and accounts receivable-trade	12,894	12,555	11,254	13,257	16,830
有価証券	Marketable securities	6,203	7,040	9,316	9,123	9,466
未成工事支出金等	Construction projects in progress	6,670	7,438	7,195	-	-
未成工事支出金	Construction projects in progress	-	-	-	6,358	3,452
繰延税金資産	Deferred tax assets	972	841	963	910	998
その他	Other	178	369	232	304	479
貸倒引当金	Allowance for doubtful accounts	△ 0	△2	△1	△20	△4
固定資産	Fixed assets	29,619	30,159	27,711	26,557	25,539
有形固定資産	Property and equipment	15,087	16,539	16,173	15,937	16,144
建物・構築物	Buildings and structures	13,006	14,776	6,488	6,608	7,020
機械・運搬具	Machinery and vehicles	2,017	2,040	321	276	194
工具器具・備品	Tools and equipment	3,490	3,566	582	551	631
土地	Land	8,575	8,575	8,575	8,246	8,246
リース資産	Lease	-	-	-	4	11
建設仮勘定	Construction in progress	169	4	206	250	39
減価償却累計額	Accumulated depreciation	△12,171	△12,423	-	-	-
無形固定資産	Intangible fixed assets	144	198	182	161	144
投資その他の資産	Investments and other assets	14,386	13,421	11,355	10,458	9,250
投資有価証券	Investment securities	12,704	12,576	9,819	8,526	7,905
長期貸付金	Long-term loans receivable	7	3	2	6	6
繰延税金資産	Deferred tax assets	548	112	1,099	1,586	990
その他	Other	1,215	818	521	434	441
貸倒引当金	Allowance for doubtful accounts	△ 89	△89	△86	△96	△93
資産合計	Total assets	61,331	63,138	60,364	60,557	60,612

※2008/3月期において、有形固定資産の表示については、2007/3月期連結会計年度まで間接控除形式で表示していたが、直接控除形式に変更しています。

連結貸借対照表 [負債/資本の部] Consolidated Balance Sheets [Liabilities/Shareholders' Equity]

(単位:百万円/Unit:Millions of yen)

		2006/3	2007/3	2008/3	2009/3	2010/3
負債の部	Liabilities					
流動負債	Current liabilities	11,411	10,949	10,510	10,412	10,054
支払手形・工事未払金等	Notes and accounts payable-trade	5,588	6,112	5,554	5,429	5,296
短期借入金	Short-term borrowings	300	716	686	553	773
未払法人税等	Accrued incom taxes	1,650	477	511	779	689
未成工事受入金	Advances received on construction projects in progress	1,075	795	1,123	957	283
役員賞与引当金	Allowance for bonuses to directors	-	43	43	44	43
完成工事補償引当金	Allowance for compensation for construction damages	25	16	15	23	29
工事損失引当金	Allowance for losses on construction contracts	542	281	295	418	618
その他	Other	2,230	2,505	2,280	2,206	2,320
固定負債	Long-term liabilities	6,329	6,854	6,217	6,387	5,604
長期借入金	Long-term debt	-	200	225	258	134
繰延税金負債	Deferred tax liabilities	6	88	14	16	29
退職給付引当金	Accrued retirement benefits	6,164	5,956	5,613	5,877	5,301
役員退職慰労引当金	Allowance for retirement benefits for directors and auditors	102	86	85	25	22
その他	Other	56	522	278	210	115
負債合計	Total liabilities	17,741	17,803	16,728	16,800	15,658
資本の部	Shareholders' equity					
資本金	Common stock	2,881	-	-	-	-
資本剰余金	Capital surplus	3,725	-	-	-	-
利益剰余金	Retained earnings	34,465	-	-	-	-
その他有価証券評価差額金	Net unrealized holding gain on available-for-sale securities	3,146	-	-	-	-
自己株式	Treasury stock	△ 627	-	-	-	-
資本合計	Total shareholders' equity	43,590	-	-	-	-
純資産の部	Net assets					
資本金	Common stock	-	2,881	2,881	2,881	2,881
資本剰余金	Capital surplus	-	3,727	3,728	3,729	3,729
利益剰余金	Retained earnings	-	35,419	35,998	36,662	37,363
自己株式	Treasury stock	-	△ 658	△ 966	△ 973	△ 980
株主資本合計	Total shareholders' equity	-	41,369	41,642	42,300	42,993
その他有価証券評価差額金	Net unrealized holding gain on available-for-sale securities	-	3,865	1,962	1,311	1,767
少数株主持分	Minority interests	-	98	31	144	193
純資産合計	Total net assets	-	45,334	43,636	43,756	44,954
負債・純資産(資本)合計	Total liabilities, net assets (Shareholders' equity)	61,331	63,138	60,364	60,557	60,612

連結損益計算書 Consolidated Statements of Operations

		(単位: 百万円/Unit: Millions of yen)				
		2006/3	2007/3	2008/3	2009/3	2010/3
売上高 (完成工事高)	Net sales	47,354	48,490	52,090	52,936	50,878
売上原価 (完成工事原価)	Cost of sales	41,001	42,915	46,509	47,450	45,571
売上総利益(完成工事総利益)	Gross profit	6,353	5,575	5,580	5,486	5,306
販売費及び一般管理費	Selling, general and administrative expenses	2,721	2,980	3,264	3,390	3,256
営業利益	Operating income	3,631	2,595	2,316	2,095	2,050
営業外収益	Non-operating income	206	205	351	364	290
営業外費用	Non-operating expenses	16	47	159	18	16
経常利益	Ordinary income	3,822	2,753	2,508	2,442	2,324
特別利益	Extraordinary income	43	69	5	324	17
特別損失	Extraordinary loss	244	20	420	360	94
税金等調整前当期純利益	Income before income taxes	3,621	2,802	2,093	2,407	2,247
法人税、住民税及び事業税	Income taxes-current	1,986	1,036	795	1,092	764
法人税等調整額	Income taxes-deferred	△ 408	159	128	12	207
当期純利益	Net income	2,043	1,601	1,237	1,189	1,225

連結キャッシュフロー計算書 Consolidated Statements of Cash Flows

		(単位: 百万円/Unit: Millions of yen)				
		2006/3	2007/3	2008/3	2009/3	2010/3
営業活動によるキャッシュ・フロー	Cash flows from operating activities	2,651	656	3,704	1,297	325
投資活動によるキャッシュ・フロー	Cash flows from investment activities	△ 2,368	△ 1,213	△ 4,783	△ 658	3,765
財務活動によるキャッシュ・フロー	Cash flows from financing activities	△ 499	△ 422	△ 966	△ 629	△ 439
現金及び現金同等物の増減額	Net increase (decrease) in cash and cash equivalents	△ 216	△ 979	△ 2,047	9	3,650
現金及び現金同等物の期首残高	Cash and cash equivalents at beginning of year	5,909	5,693	5,223	3,176	3,186
現金及び現金同等物の期末残高	Cash and cash equivalents at end of year	5,693	5,223	3,176	3,186	6,836

貸借対照表 [資産の部] Non-Consolidated Balance Sheets [Assets]

		(単位:百万円/Unit: Millions of yen)				
		2006/3	2007/3	2008/3	2009/3	2010/3
資産の部	Assets					
流動資産	Current assets	30,778	30,199	29,977	30,624	31,630
現金預金	Cash and cash equivalents	3,903	3,081	2,280	2,033	1,910
受取手形	Notes receivable	95	658	176	210	401
完成工事未収入金	Accounts receivable-trade	12,672	11,303	10,219	12,294	15,641
有価証券	Marketable securities	6,203	6,880	9,316	9,123	9,416
未成工事支出金	Construction projects in progress	6,592	7,168	6,743	5,769	2,937
材料貯蔵品	Stock of materials	89	78	113	-	-
繰延税金資産	Deferred tax assets	924	786	822	852	825
その他	Other	296	240	304	341	497
固定資産	Fixed assets	28,890	29,284	26,794	25,880	24,958
有形固定資産	Property and equipment	13,657	14,545	14,141	13,764	14,222
建物・構築物	Buildings and structures	5,014	5,831	5,484	5,108	5,595
機械・運搬具	Machinery and vehicles	198	270	220	203	148
工具器具・備品	Tools and equipment	319	318	287	349	389
土地	Land	8,123	8,123	8,123	7,795	7,795
リース資産	Lease	-	-	-	57	254
建設仮勘定	Construction in progress	-	-	24	248	39
無形固定資産	Intangible fixed assets	130	184	170	143	130
ソフトウェア	Software	52	161	141	119	103
その他	Other	75	22	27	24	27
投資その他の資産	Investments and other assets	15,102	14,555	12,482	11,972	10,604
投資有価証券	Investment securities	12,676	12,565	9,812	8,519	7,898
関係会社株式	Investment securities of affiliated companies	231	236	236	236	236
長期貸付金	Long-term loans receivable	676	1,151	1,230	1,525	1,389
繰延税金資産	Deferred tax assets	447	-	973	1,468	862
その他	Other	1,160	691	316	309	311
貸倒引当金	Allowance for doubtful accounts	△ 89	△ 89	△ 86	△ 86	△ 92
資産合計	Total assets	59,668	59,483	56,771	56,505	56,589

貸借対照表 [負債/資本の部] Non-Consolidated Balance Sheets [Liabilities/Shareholders' Equity]

(単位:百万円/Unit:Millions of yen)

		2006/3	2007/3	2008/3	2009/3	2010/3
負債の部	Liabilities					
流動負債	Current liabilities	11,081	9,403	8,848	8,501	8,112
工事未払金	Accounts payable-trade	5,453	5,375	4,669	4,697	4,545
短期借入金	Short-term borrowings	300	300	300	300	300
リース債務	Lease	-	-	-	16	50
未払費用	Accrued expense	1,333	1,343	1,378	1,400	1,424
未払法人税等	Accrued income taxes	1,602	409	449	700	518
未成工事受入金	Advances received on construction projects in progress	1,049	619	1,047	309	112
完成工事補償引当金	Allowance for compensation for construction damages	25	16	15	21	24
工事損失引当金	Allowance for losses on construction contracts	540	280	291	412	477
その他	Other	775	1,056	695	642	659
固定負債	Long-term liabilities	6,189	6,055	5,610	5,905	5,400
リース債務	Lease	-	-	-	46	160
退職給付引当金	Accrued retirement benefits	6,074	5,861	5,512	5,772	5,155
役員退職慰労引当金	Allowance for retirement benefits for directors and auditors	78	60	62	-	-
その他	Other	36	132	35	86	84
負債合計	Total liabilities	17,270	15,459	14,458	14,407	13,513
資本の部	Shareholders' equity					
資本金	Common stock	2,881	-	-	-	-
資本剰余金	Capital Surplus	3,725	-	-	-	-
利益剰余金	Retained earnings	33,280	-	-	-	-
その他	Net unrealized holding gain on available-for-sale securities	3,138	-	-	-	-
自己株式	Treasury stock	△ 627	-	-	-	-
資本合計	Total shareholders' equity	42,398	-	-	-	-
純資産の部	Net assets					
資本金	Common stock	-	2,881	2,881	2,881	2,881
資本剰余金	Capital surplus	-	3,727	3,728	3,729	3,729
利益剰余金	Retained earnings	-	34,208	34,707	35,148	35,678
自己株式	Treasury stock	-	△ 658	△ 966	△ 973	△ 980
株主資本合計	Total shareholders' equity	-	40,158	40,351	40,785	41,308
評価・換算差額等合計	Total valuation and translation adjustments	-	3,866	1,962	1,311	1,767
純資産合計	Total net assets	-	44,024	42,313	42,097	43,075
負債・純資産(資本)合計	Total liabilities, net assets (Shareholders' equity)	59,668	59,483	56,771	56,505	56,589

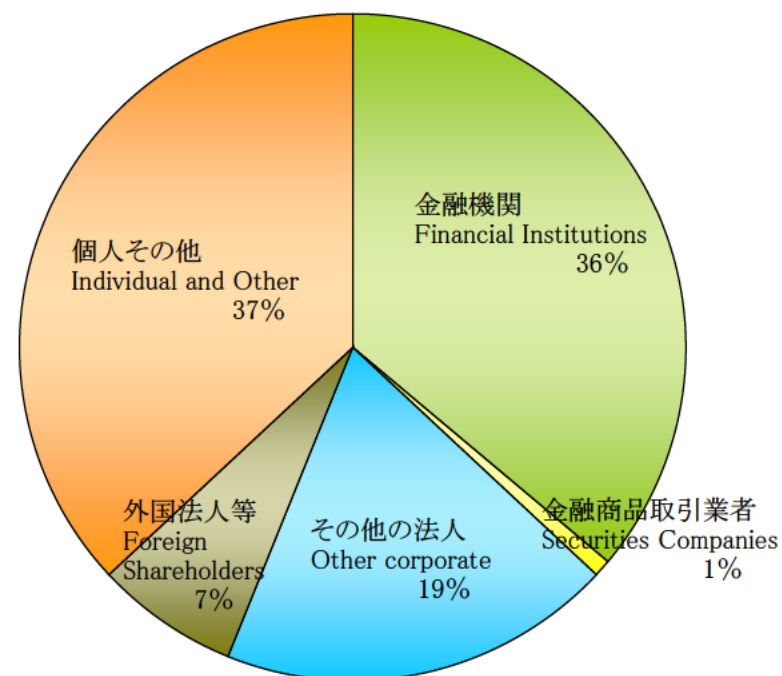
損益計算書 Non-Consolidated Statements of Operations

		(単位: 百万円/Unit: Millions of yen)				
		2006/3	2007/3	2008/3	2009/3	2010/3
売上高 (完成工事高)	Net sales	46,736	46,807	49,116	50,126	47,037
売上原価 (完成工事原価)	Cost of sales	40,869	41,784	44,360	45,741	42,656
売上総利益(完成工事総利益)	Gross profit	5,867	5,022	4,755	4,384	4,381
販売費及び一般管理費	Selling, general and administrative expenses	2,402	2,531	2,702	2,805	2,642
営業利益	Operating income	3,464	2,490	2,053	1,579	1,738
営業外収益	Non-operating income	242	216	297	320	253
営業外費用	Non-operating expenses	16	35	141	4	4
経常利益	Ordinary income	3,690	2,671	2,210	1,895	1,987
特別利益	Extraordinary income	42	54	-	321	-
特別損失	Extraordinary loss	190	4	140	342	94
税引前当期純利益	Income before income taxes	3,541	2,721	2,069	1,874	1,892
法人税、住民税及び事業税	Income taxes-current	1,925	974	709	986	518
法人税等調整額	Income taxes-deferred	△ 380	184	203	△ 78	318
当期純利益	Net income	1,996	1,562	1,156	966	1,055

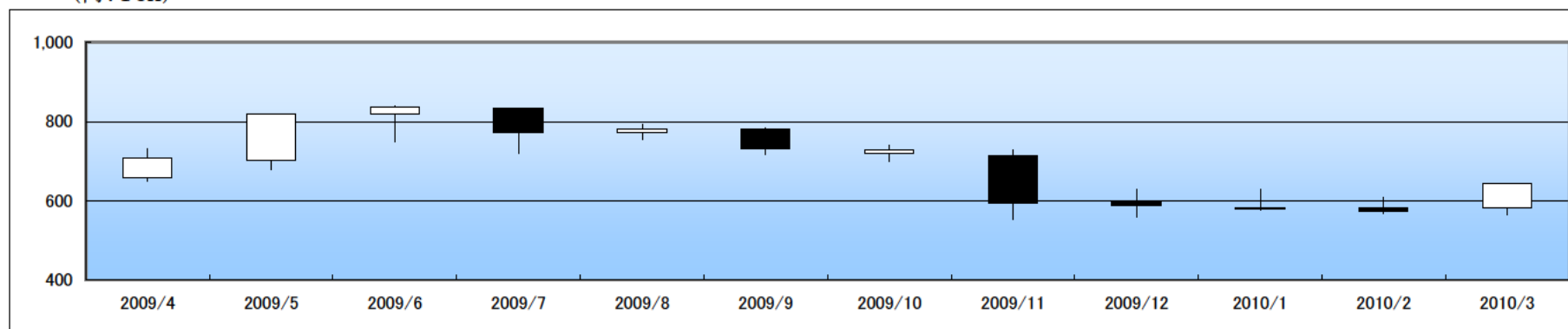
会社概況 Corporate Information

商号 Company Name	株式会社東京エネシス TOKYO ENERGY & SYSTEMS INC.
本店所在地 Address of Head Office	〒105-0004 東京都港区新橋六丁目9番7号 9-7 Shimbashi 6-chome, Minato-ku, Tokyo, Japan
設立 Established	1947年(昭和22年)8月14日 August 14, 1947
資本金 Capital	28億81百万円 2,881millions of yen
株式上場 Exchange	東京証券取引所 市場第一部(証券コード1945) Tokyo Stock Exchange, First Section (Code: 1945)
従業員数 Number of Employees	1,425名(H22.3.31現在) 1,425
ホームページアドレス URL	http://www.qtes.co.jp/ http://www.qtes.co.jp/

所有者別分布状況 Shareholders by Category



株価の推移 Stock Price Range
(円:Yen)



株式会社東京エネシス お客様本部 広報室

TOKYO ENERGY & SYSTEMS INC.

Public Relations Division

TEL 03-6371-5260

FAX 03-3434-0951

URL <http://www.qtes.co.jp>