

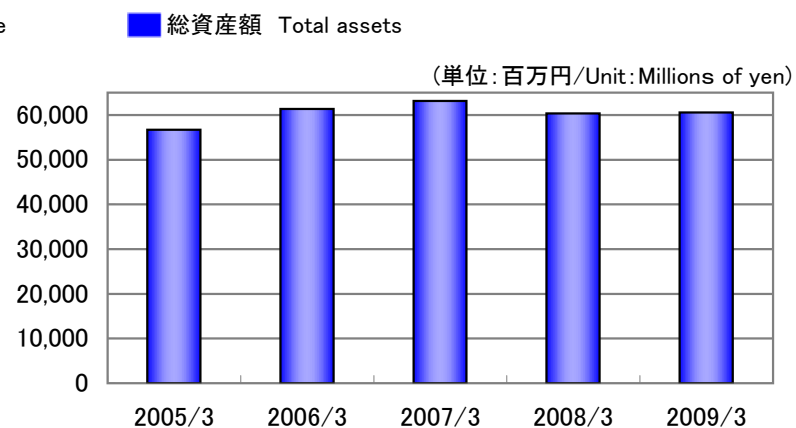
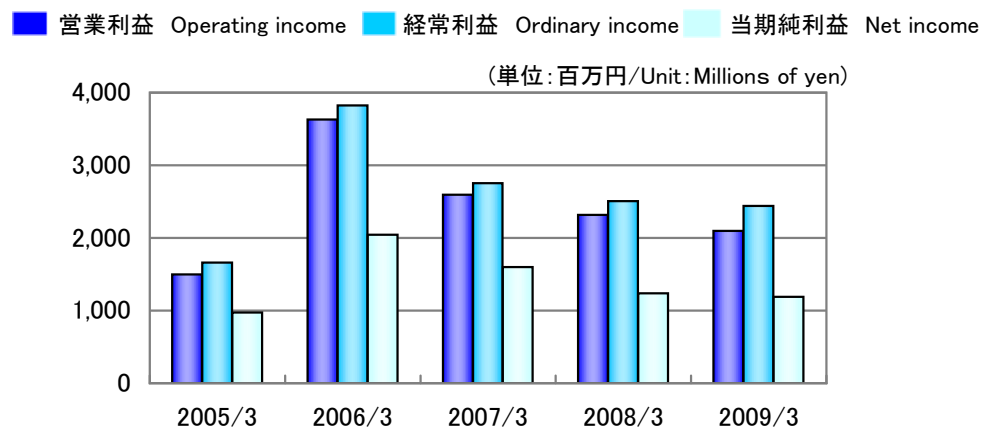
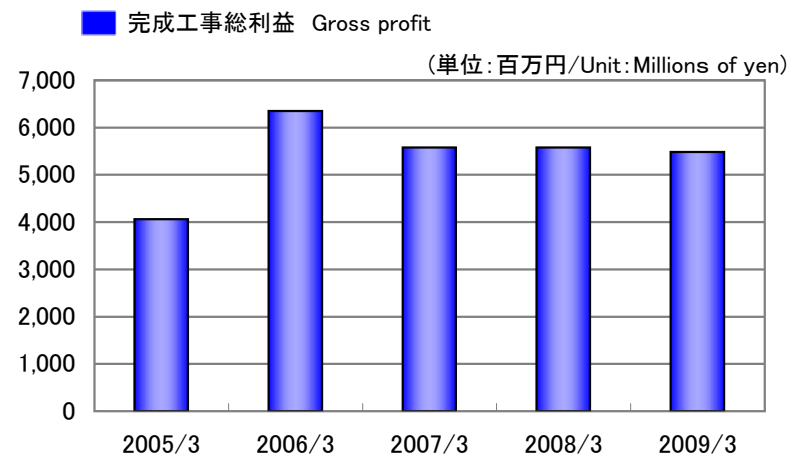
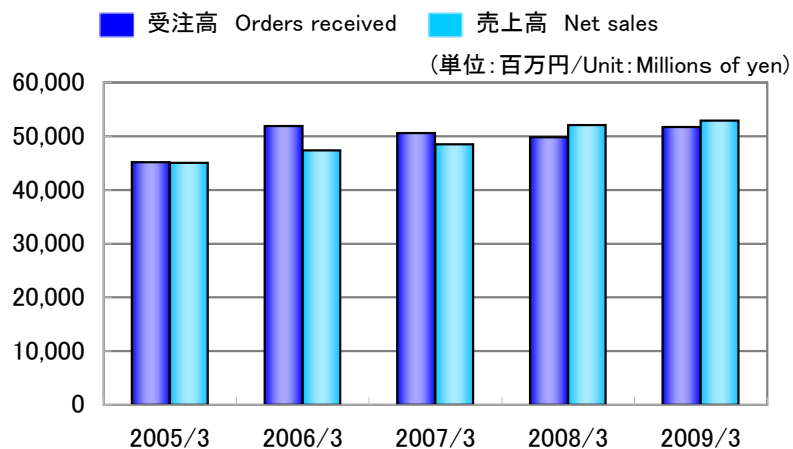
Fact Book 2008

株式会社東京エネシス
TOKYO ENERGY & SYSTEMS INC.

Fact Sheet 2008 目次

| | |
|--|----|
| 業績ハイライト(連結) Financial Highlights (Consolidated) | 1 |
| 業績ハイライト(個別) Financial Highlights (Non-Consolidated) | 2 |
| 部門別受注高(連結) Orders Received by Business Category (Consolidated) | 3 |
| 部門別受注高(個別) Orders Received by Business Category (Non-Consolidated) | 4 |
| 部門別売上高(連結) Net Sales by Business Category (Consolidated) | 5 |
| 部門別売上高(個別) Net Sales by Business Category (Non-Consolidated) | 6 |
| 得意先別売上高(個別) Net Sales by Client (Non-Consolidated) | 7 |
| 収益性指標(連結) Profitability (Consolidated) | 8 |
| 安全性指標(連結) Stability (Consolidated) | 9 |
| 従業員1人当たり指標(連結) Per Employee (Consolidated) | 10 |
| 1株当たり指標(個別) Per Share Data (Non-Consolidated) | 11 |
| その他指標(連結) Other Data (Consolidated) | 12 |
| その他指標(個別) Other Data (Non-Consolidated) | 13 |
| 連結貸借対照表 [資産の部] Consolidated Balance Sheets [Assets] | 14 |
| 連結貸借対照表 [負債/資本の部] Consolidated Balance Sheets [Liabilities/Shareholders' Equity] | 15 |
| 連結損益計算書 Consolidated Statements of Operations | 16 |
| 連結キャッシュフロー計算書 Consolidated Statements of Cash Flows | 16 |
| 貸借対照表 [資産の部] Non-Consolidated Balance Sheets [Assets] | 17 |
| 貸借対照表 [負債/資本の部] Non-Consolidated Balance Sheets [Liabilities/Shareholders' Equity] | 18 |
| 損益計算書 Non-Consolidated Statements of Operations | 19 |
| 会社概況 Corporate Information | 20 |

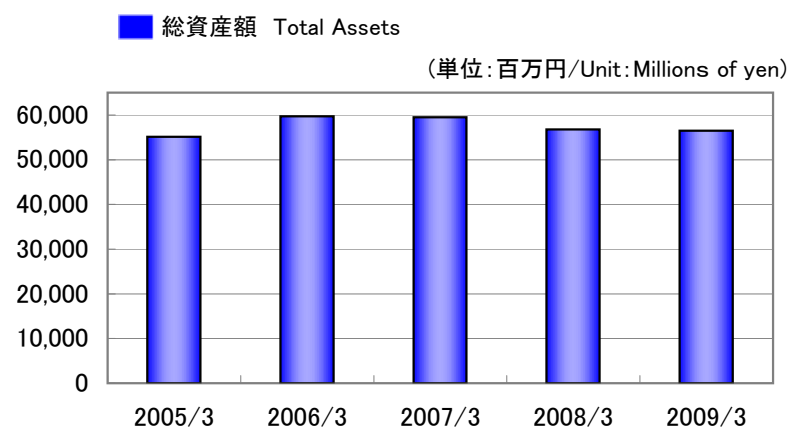
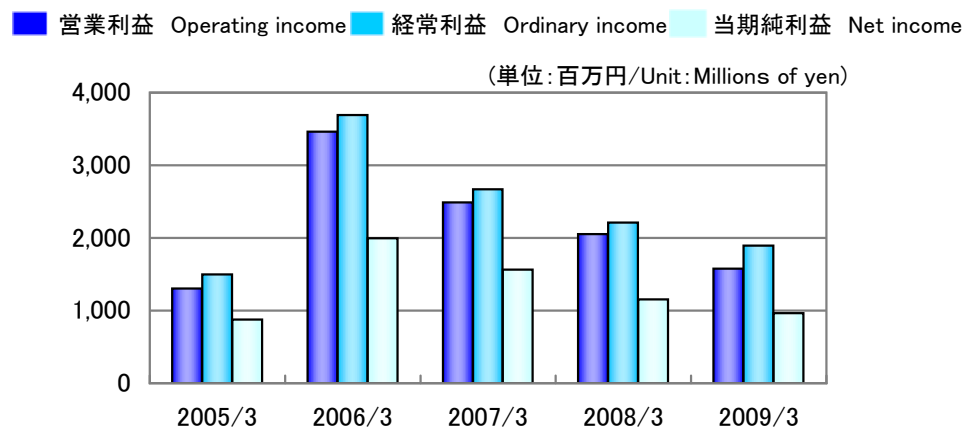
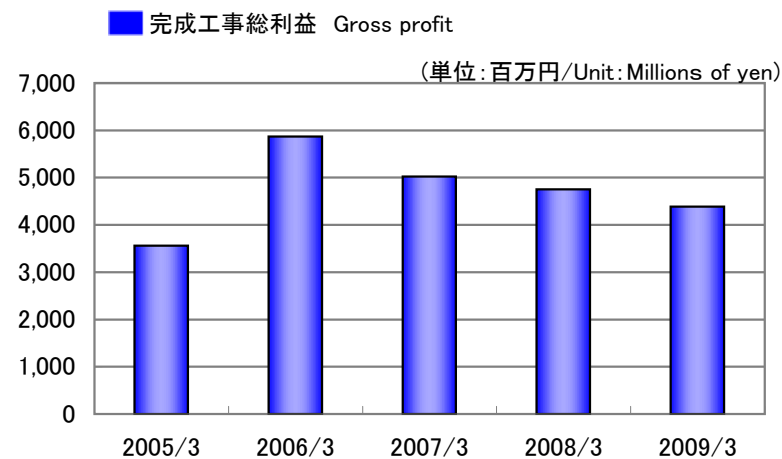
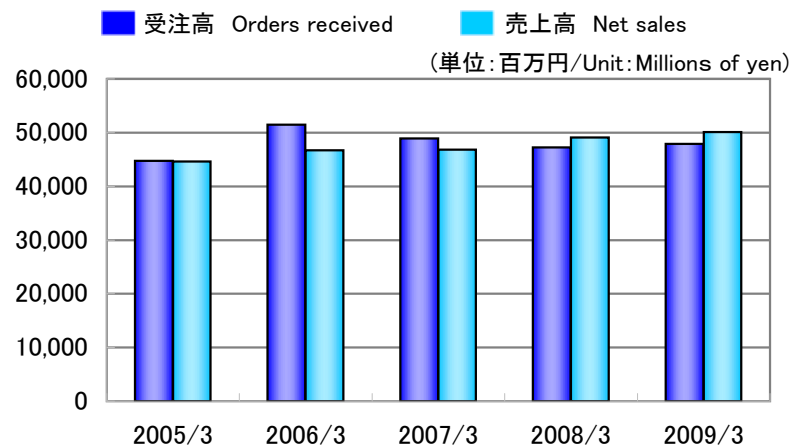
業績ハイライト(連結) Financial Highlights (Consolidated)



(単位: 百万円/Unit: Millions of yen)

| | | 2005/3 | 2006/3 | 2007/3 | 2008/3 | 2009/3 |
|-------------|------------------|--------|--------|--------|--------|--------|
| 受注高 | Orders received | 45,192 | 51,907 | 50,568 | 49,812 | 51,702 |
| 売上高 (完成工事高) | Net sales | 45,034 | 47,354 | 48,490 | 52,090 | 52,936 |
| 完成工事総利益 | Gross profit | 4,062 | 6,353 | 5,575 | 5,580 | 5,486 |
| 営業利益 | Operating income | 1,497 | 3,631 | 2,595 | 2,316 | 2,095 |
| 経常利益 | Ordinary income | 1,659 | 3,822 | 2,753 | 2,508 | 2,442 |
| 当期純利益 | Net income | 973 | 2,043 | 1,601 | 1,237 | 1,189 |
| 総資産額 | Total assets | 56,692 | 61,331 | 63,138 | 60,364 | 60,557 |

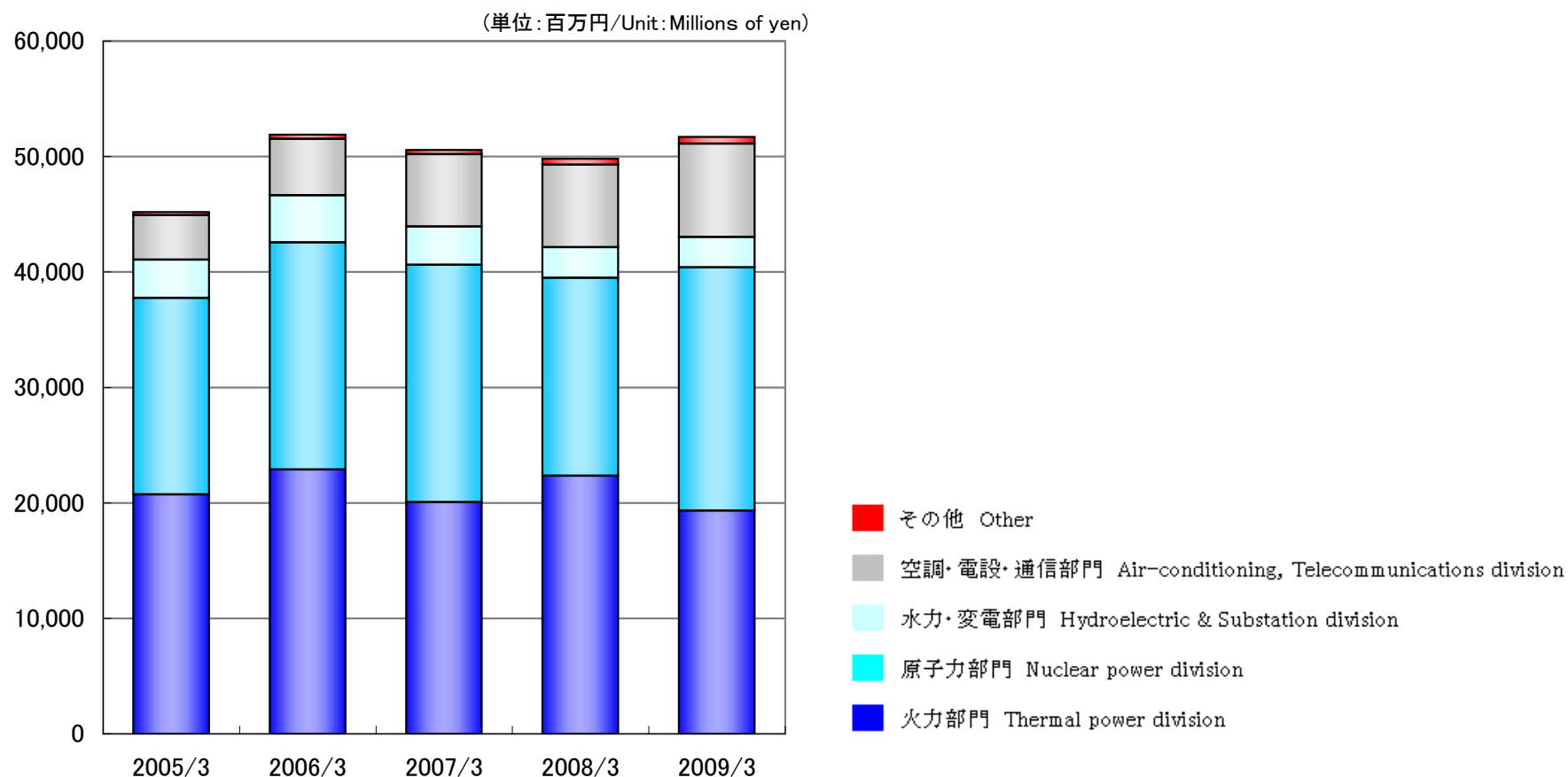
業績ハイライト(個別) Financial Highlights (Non-Consolidated)



(単位: 百万円/Unit: Millions of yen)

| | | 2005/3 | 2006/3 | 2007/3 | 2008/3 | 2009/3 |
|------------|------------------|--------|--------|--------|--------|--------|
| 受注高 | Orders received | 44,767 | 51,484 | 48,940 | 47,244 | 47,877 |
| 売上高(完成工事高) | Net sales | 44,645 | 46,736 | 46,807 | 49,116 | 50,126 |
| 完成工事総利益 | Gross profit | 3,559 | 5,867 | 5,022 | 4,755 | 4,384 |
| 営業利益 | Operating income | 1,304 | 3,464 | 2,490 | 2,053 | 1,579 |
| 経常利益 | Ordinary income | 1,499 | 3,690 | 2,671 | 2,210 | 1,895 |
| 当期純利益 | Net income | 876 | 1,996 | 1,562 | 1,156 | 966 |
| 総資産額 | Total assets | 55,100 | 59,668 | 59,483 | 56,771 | 56,505 |

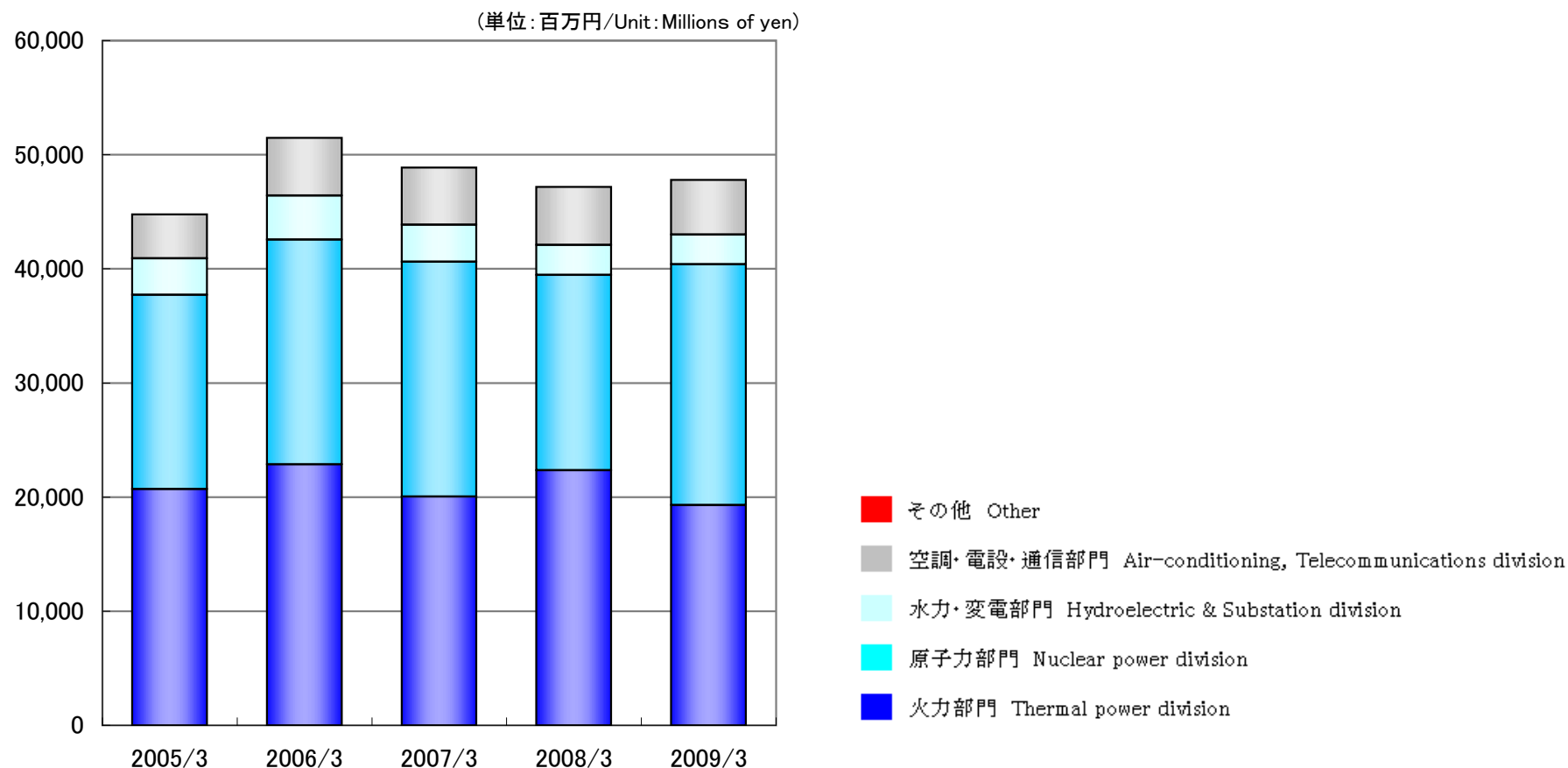
部門別受注高(連結) Orders Received by Business Category (Consolidated)



(単位: 百万円/Unit: Millions of yen)

| | | 2005/3 | 2006/3 | 2007/3 | 2008/3 | 2009/3 |
|------------|---|--------|--------|--------|--------|--------|
| 火力部門 | Thermal power division | 20,727 | 22,885 | 20,055 | 22,351 | 19,318 |
| 原子力部門 | Nuclear power division | 17,016 | 19,687 | 20,571 | 17,135 | 21,090 |
| 水力・変電部門 | Hydroelectric & Substation division | 3,331 | 4,076 | 3,312 | 2,664 | 2,610 |
| 空調・電設・通信部門 | Air-conditioning, Telecommunications division | 3,845 | 4,871 | 6,271 | 7,130 | 8,082 |
| その他部門 | Other | 272 | 385 | 357 | 531 | 600 |
| 合計 | Total | 45,192 | 51,907 | 50,568 | 49,812 | 51,702 |

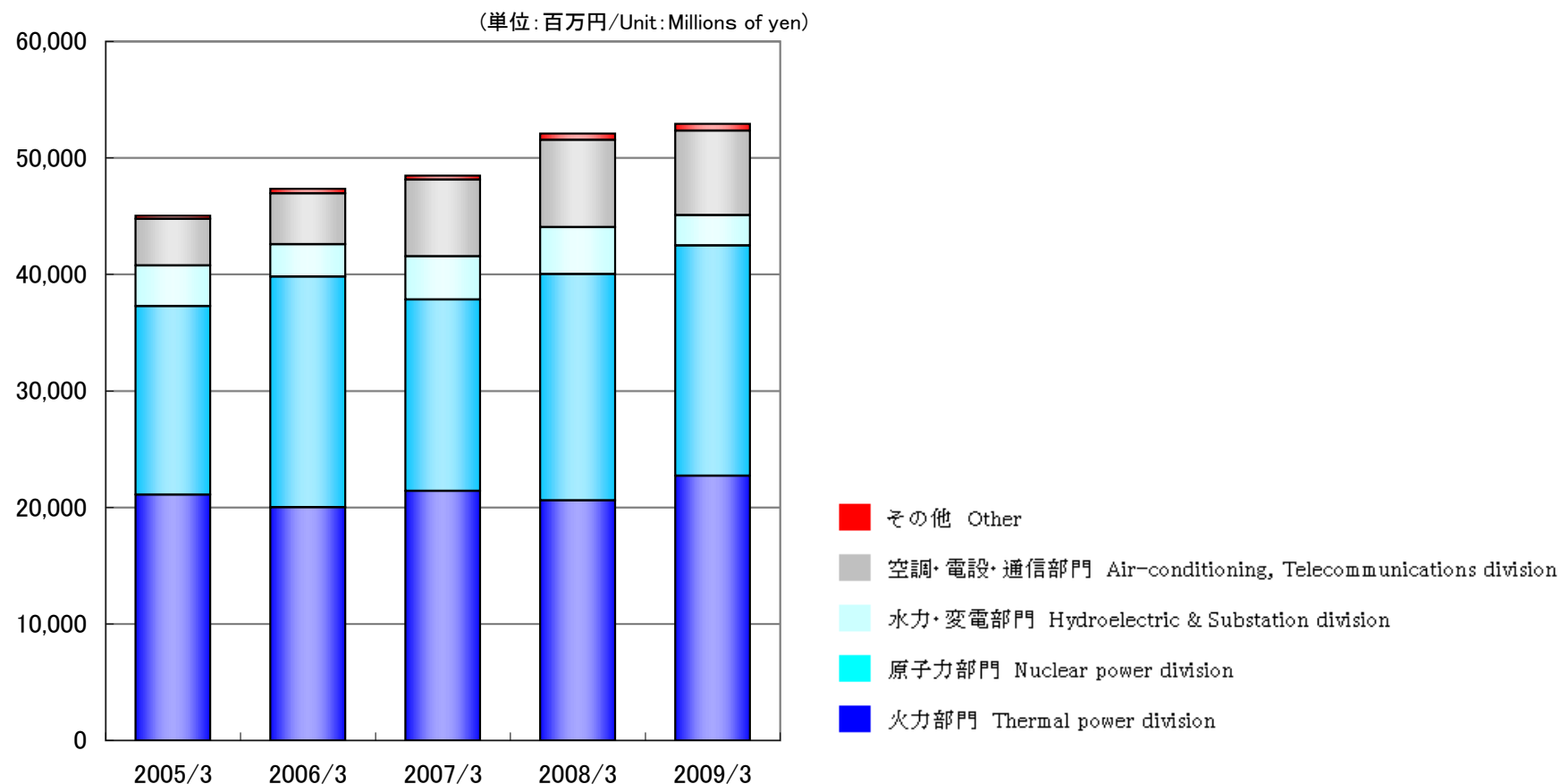
部門別受注高(個別) Orders Received by Business Category (Non-Consolidated)



(単位:百万円/Unit: Millions of yen)

| | | 2005/3 | 2006/3 | 2007/3 | 2008/3 | 2009/3 |
|------------|---|--------|--------|--------|--------|--------|
| 火力部門 | Thermal power division | 20,708 | 22,868 | 20,046 | 22,340 | 19,312 |
| 原子力部門 | Nuclear power division | 17,016 | 19,687 | 20,571 | 17,135 | 21,090 |
| 水力・変電部門 | Hydroelectric & Substation division | 3,202 | 3,874 | 3,247 | 2,627 | 2,592 |
| 空調・電設・通信部門 | Air-conditioning, Telecommunications division | 3,840 | 5,054 | 5,015 | 5,066 | 4,811 |
| その他 | Other | - | - | 59 | 74 | 70 |
| 合計 | Total | 44,767 | 51,484 | 48,940 | 47,244 | 47,877 |

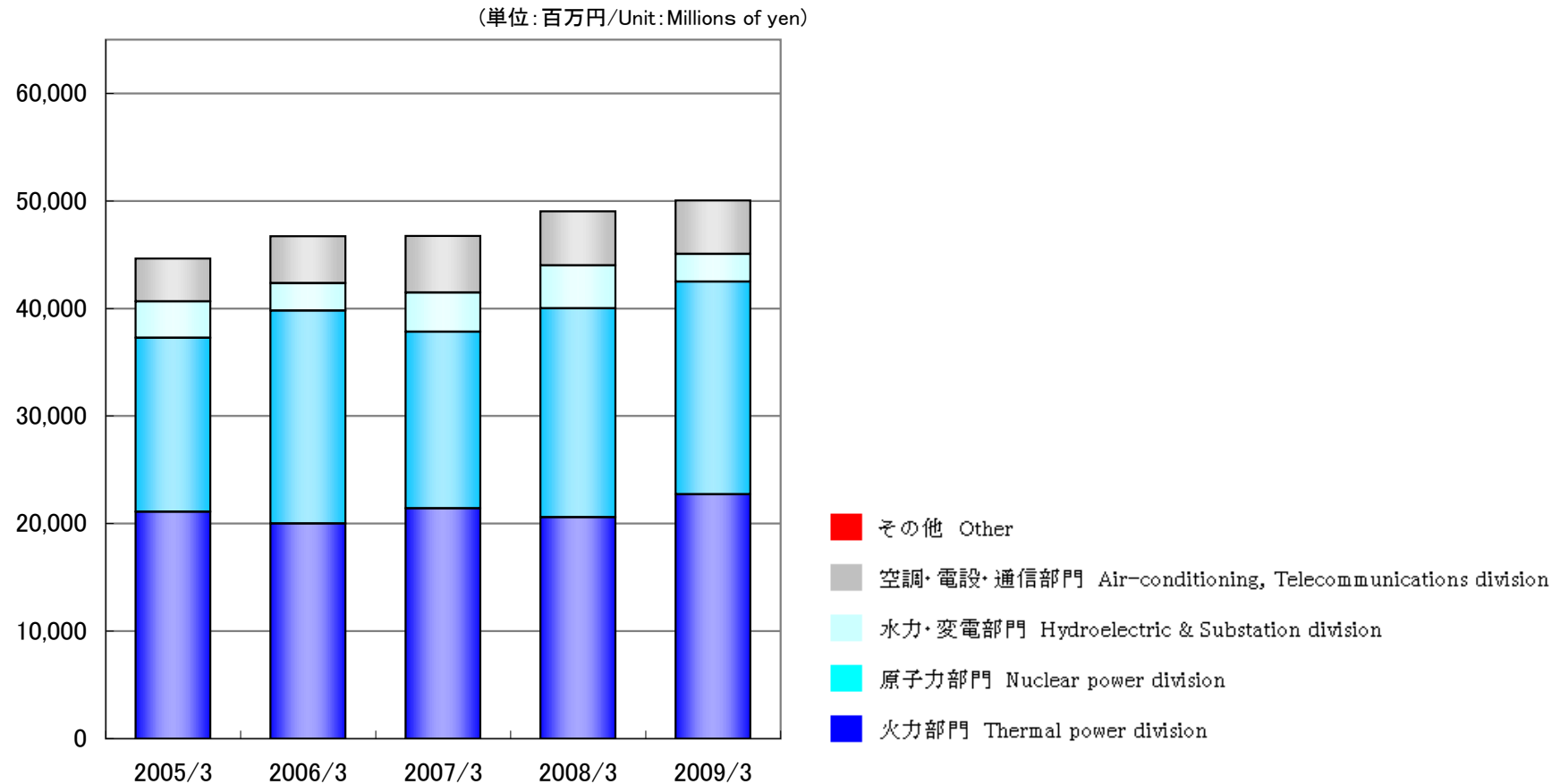
部門別売上高(連結) Net Sales by Business Category (Consolidated)



(単位: 百万円/Unit: Millions of yen)

| | | 2005/3 | 2006/3 | 2007/3 | 2008/3 | 2009/3 |
|------------|---|--------|--------|--------|--------|--------|
| 火力部門 | Thermal power division | 21,109 | 20,024 | 21,418 | 20,606 | 22,724 |
| 原子力部門 | Nuclear power division | 16,169 | 19,797 | 16,422 | 19,431 | 19,767 |
| 水力・変電部門 | Hydroelectric & Substation division | 3,487 | 2,776 | 3,718 | 4,032 | 2,605 |
| 空調・電設・通信部門 | Air-conditioning, Telecommunications division | 3,997 | 4,369 | 6,572 | 7,488 | 7,238 |
| その他部門 | Other | 272 | 385 | 357 | 531 | 600 |
| 合計 | Total | 45,034 | 47,354 | 48,490 | 52,090 | 52,936 |

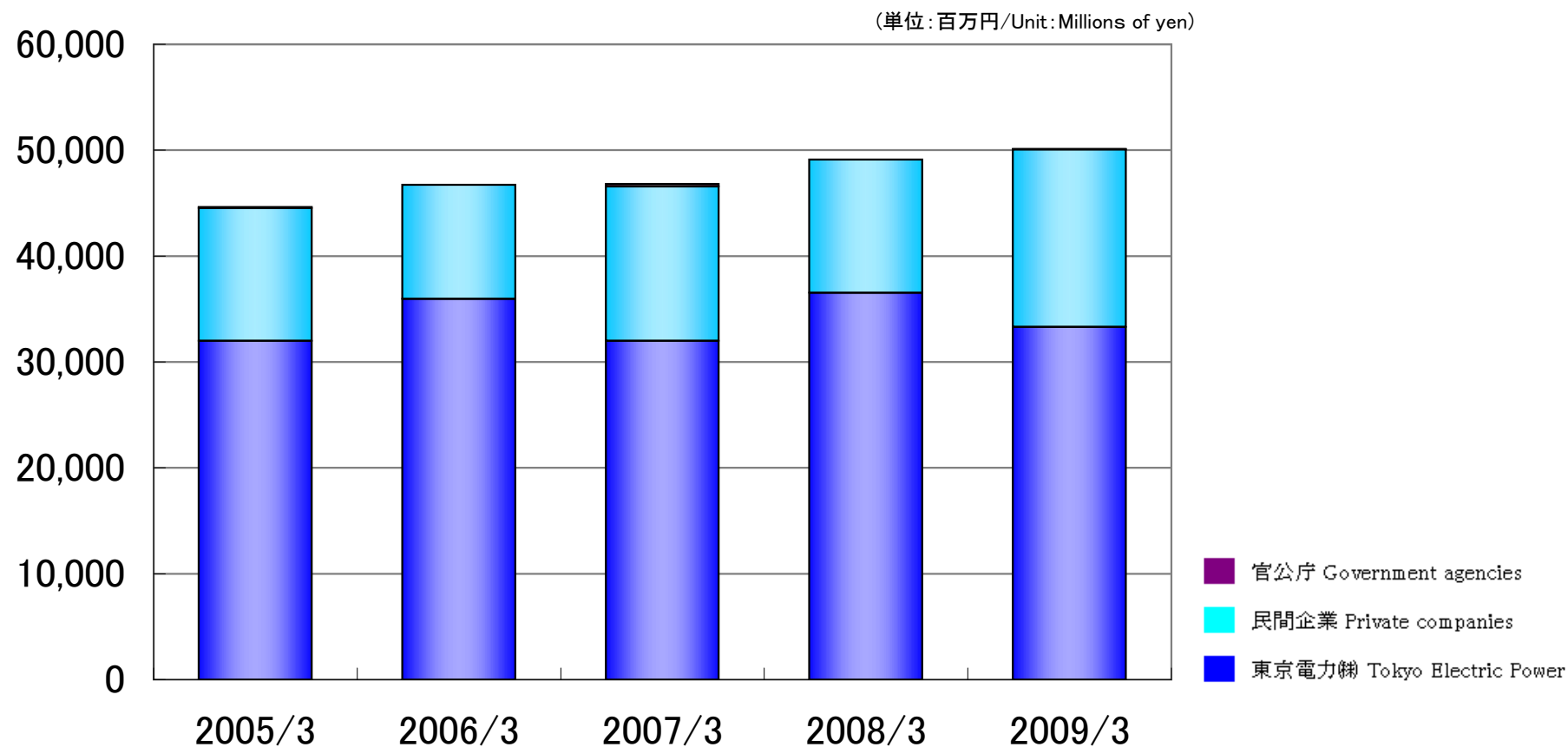
部門別売上高(個別) Net Sales by Business Category (Non-Consolidated)



(単位: 百万円/Unit: Millions of yen)

| | | 2005/3 | 2006/3 | 2007/3 | 2008/3 | 2009/3 |
|------------|---|--------|--------|--------|--------|--------|
| 火力部門 | Thermal power division | 21,103 | 20,006 | 21,410 | 20,585 | 22,717 |
| 原子力部門 | Nuclear power division | 16,169 | 19,797 | 16,422 | 19,431 | 19,767 |
| 水力・変電部門 | Hydroelectric & Substation division | 3,380 | 2,559 | 3,639 | 3,986 | 2,583 |
| 空調・電設・通信部門 | Air-conditioning, Telecommunications division | 3,992 | 4,372 | 5,275 | 5,038 | 4,987 |
| その他 | Other | - | - | 59 | 74 | 70 |
| 合計 | Total | 44,645 | 46,736 | 46,807 | 49,116 | 50,126 |

得意先別売上高(個別) Net Sales by Client (Non-Consolidated)

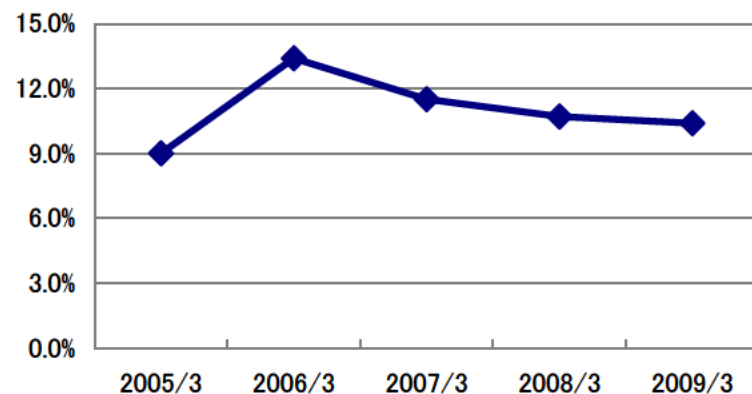


(単位: 百万円/Unit: Millions of yen)

| | | 2005/3 | 2006/3 | 2007/3 | 2008/3 | 2009/3 |
|-------|----------------------|--------|--------|--------|--------|--------|
| 東京電力株 | Tokyo Electric Power | 31,986 | 35,956 | 32,004 | 36,518 | 33,317 |
| 民間企業 | Private companies | 12,545 | 10,776 | 14,565 | 12,596 | 16,756 |
| 官公庁 | Government agencies | 114 | 4 | 238 | 1 | 53 |
| 合計 | Total | 44,645 | 46,736 | 46,807 | 49,116 | 50,126 |

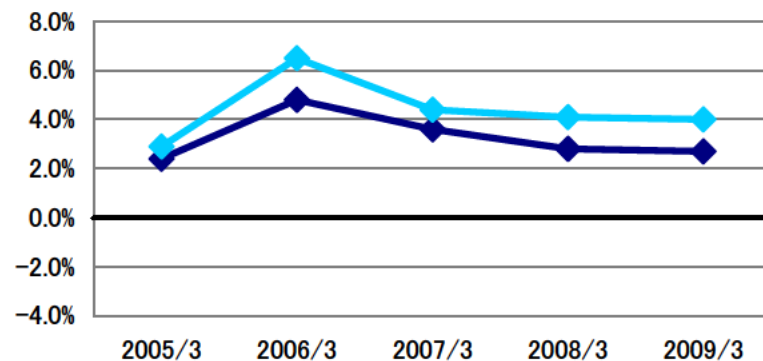
収益性指標(連結) Profitability (Consolidated)

◆ 売上高総利益率(%) Ratio of gross profit to net sales(%)



◆ 自己資本利益率(%) Return on equity(%)

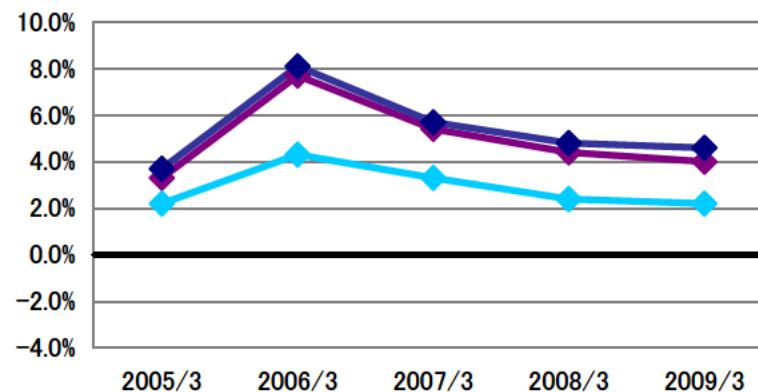
◆ 総資産経常利益率(%) Return on total assets(%)



◆ 売上高営業利益率(%) Ratio of operating income to net sales(%)

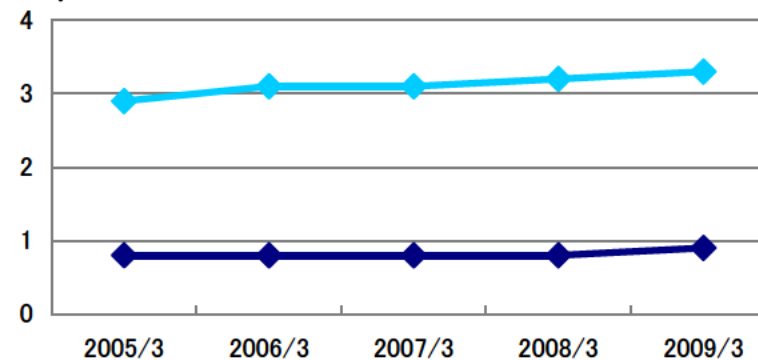
◆ 売上高経常利益率(%) Ratio of ordinary income to net sales(%)

◆ 売上高当期純利益率(%) Ratio of net income to net sales(%)



◆ 有形固定資産回転率(回) Tangible fixed assets turnover(Times)

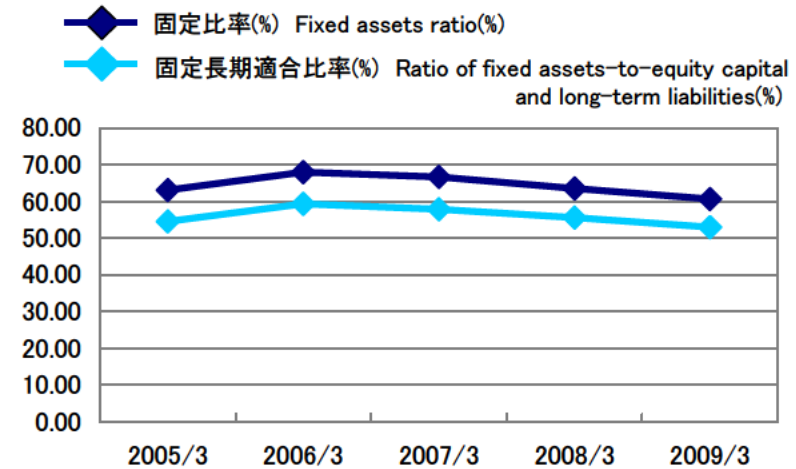
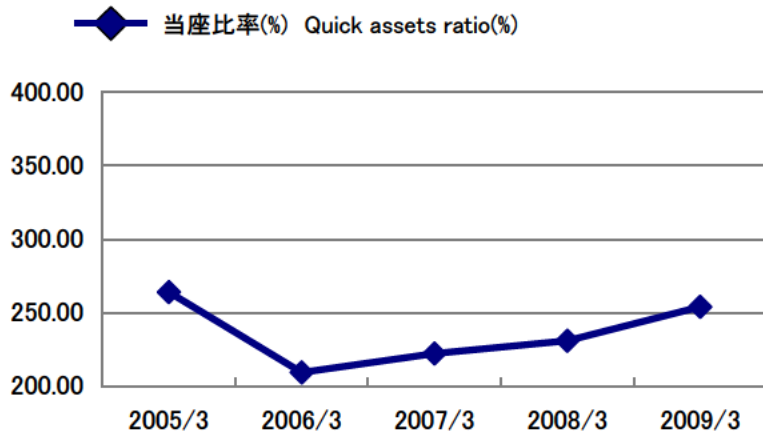
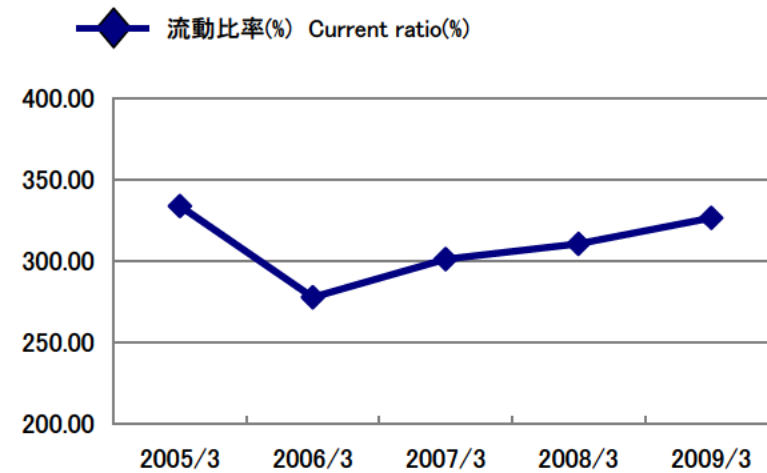
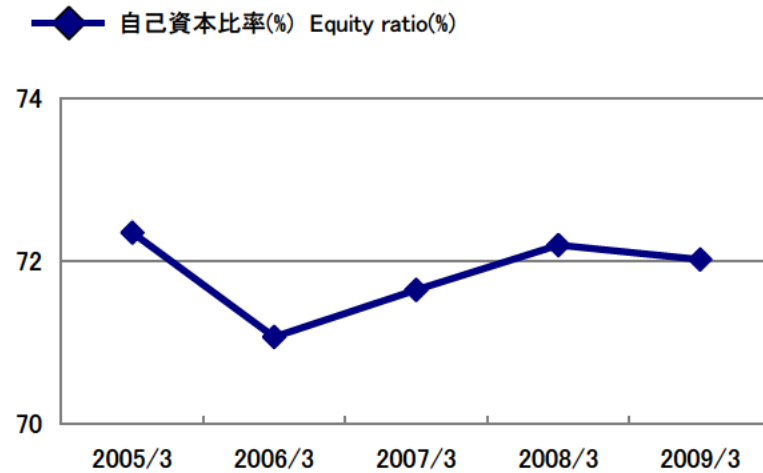
◆ 総資産回転率(回) Total assets turnover(Times)



| | |
|--------------|--|
| 売上高総利益率(%) | Ratio of gross profit to net sales (%) |
| 売上高営業利益率(%) | Ratio of operating income to net sales (%) |
| 売上高経常利益率(%) | Ratio of ordinary income to net sales (%) |
| 売上高当期純利益率(%) | Ratio of net income to net sales (%) |
| 自己資本利益率(%) | Return on equity (%) |
| 総資産経常利益率(%) | Return on total assets (%) |
| 総資産回転率(回) | Total assets turnover (Times) |
| 有形固定資産回転率(回) | Tangible fixed assets turnover (Times) |

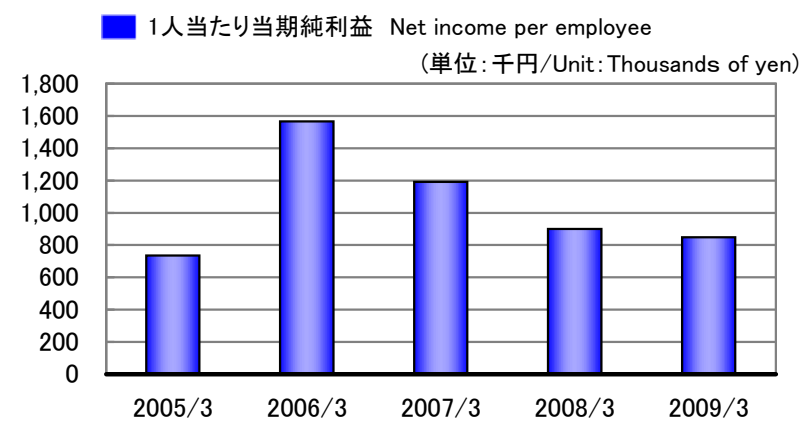
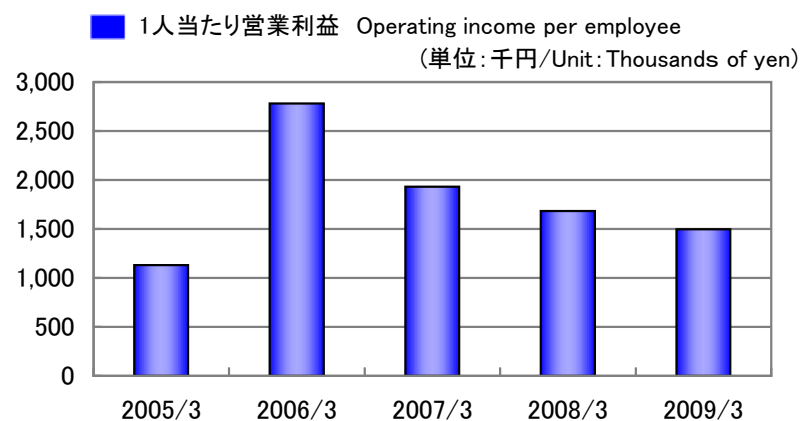
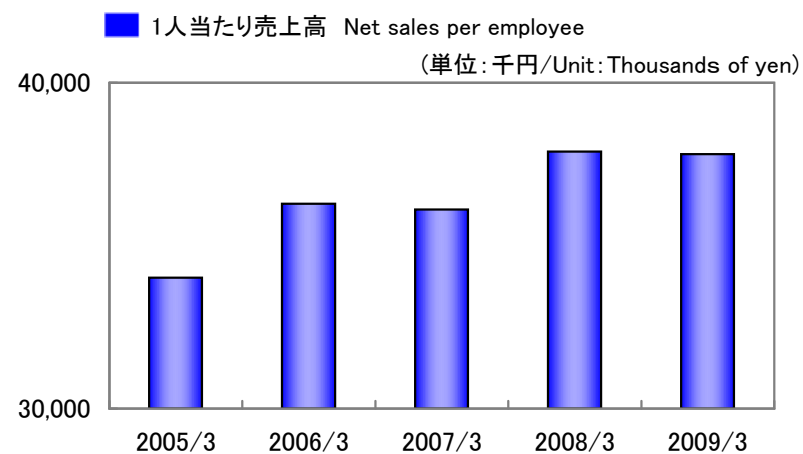
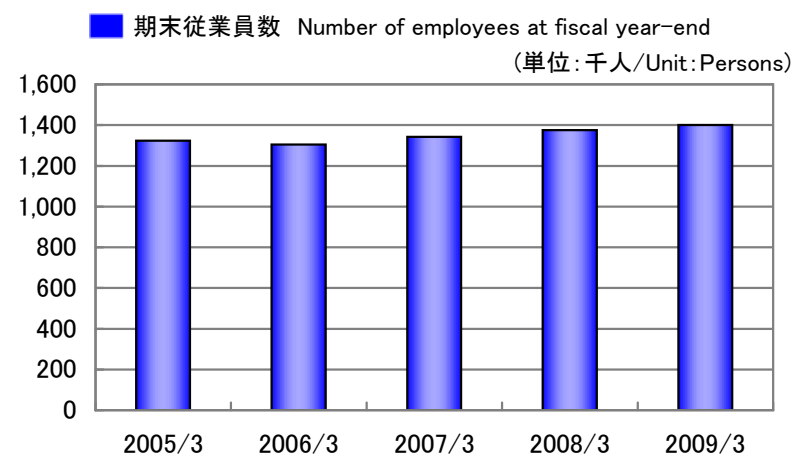
| | 2005/3 | 2006/3 | 2007/3 | 2008/3 | 2009/3 |
|--------------|--------|--------|--------|--------|--------|
| 売上高総利益率(%) | 9.0% | 13.4% | 11.5% | 10.7% | 10.4% |
| 売上高営業利益率(%) | 3.3% | 7.7% | 5.4% | 4.4% | 4.0% |
| 売上高経常利益率(%) | 3.7% | 8.1% | 5.7% | 4.8% | 4.6% |
| 売上高当期純利益率(%) | 2.2% | 4.3% | 3.3% | 2.4% | 2.2% |
| 自己資本利益率(%) | 2.4% | 4.8% | 3.6% | 2.8% | 2.7% |
| 総資産経常利益率(%) | 2.9% | 6.5% | 4.4% | 4.1% | 4.0% |
| 総資産回転率(回) | 0.8回 | 0.8回 | 0.8回 | 0.8回 | 0.9回 |
| 有形固定資産回転率(回) | 2.9回 | 3.1回 | 3.1回 | 3.2回 | 3.3回 |

安全性指標(連結) Stability (Consolidated)



| | | 2005/3 | 2006/3 | 2007/3 | 2008/3 | 2009/3 |
|-------------|---|--------|--------|--------|--------|--------|
| 自己資本比率(%) | Equity ratio (%) | 72.35 | 71.07 | 71.65 | 72.24 | 72.02 |
| 流動比率(%) | Current ratio (%) | 333.83 | 277.89 | 301.20 | 310.69 | 326.53 |
| 当座比率(%) | Quick assets ratio (%) | 263.90 | 209.34 | 222.20 | 230.86 | 254.00 |
| 固定比率(%) | Fixed assets ratio (%) | 63.07 | 67.95 | 66.67 | 63.55 | 60.69 |
| 固定長期適合比率(%) | Ratio of fixed assets-to-equity capital and long-term liabilities (%) | 54.51 | 59.33 | 57.90 | 55.62 | 52.96 |

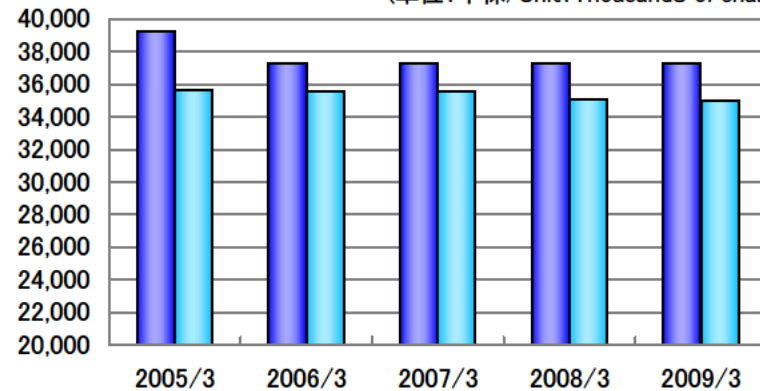
従業員1人当たり指標(連結) Per Employee (Consolidated)



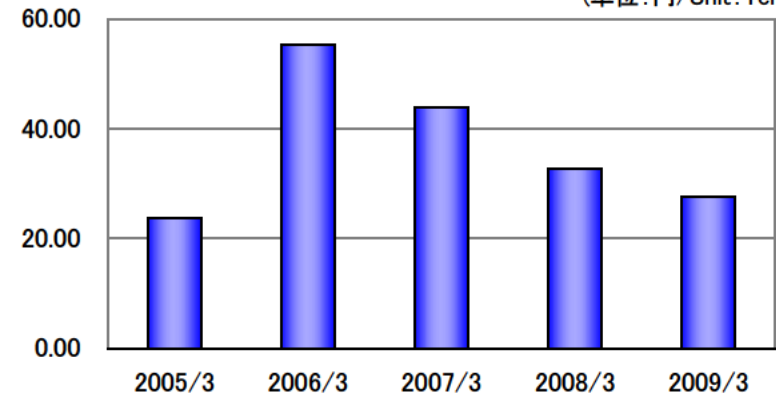
| | | 2005/3 | 2006/3 | 2007/3 | 2008/3 | 2009/3 |
|----------------|--|--------|--------|--------|--------|--------|
| 期末従業員数(人) | Number of employees at fiscal year-end (Persons) | 1,324 | 1,305 | 1,343 | 1,375 | 1,400 |
| 1人当たり売上高(千円) | Net sales per employee (Thousands of yen) | 34,014 | 36,287 | 36,106 | 37,884 | 37,811 |
| 1人当たり営業利益(千円) | Operating income per employee (Thousands of yen) | 1,131 | 2,782 | 1,932 | 1,684 | 1,497 |
| 1人当たり当期純利益(千円) | Net income per employee (Thousands of yen) | 735 | 1,566 | 1,192 | 900 | 849 |

1株当たり指標(個別) Per Share Data (Non-Consolidated)

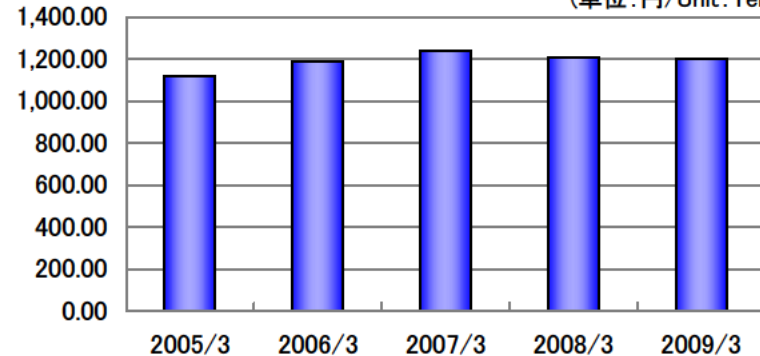
■ 発行済株式総数 Number of outstanding shares issued
 ■ 自己株式控除後発行済株式総数 After deduction from treasury stock
 (単位:千株/Unit:Thousands of share)



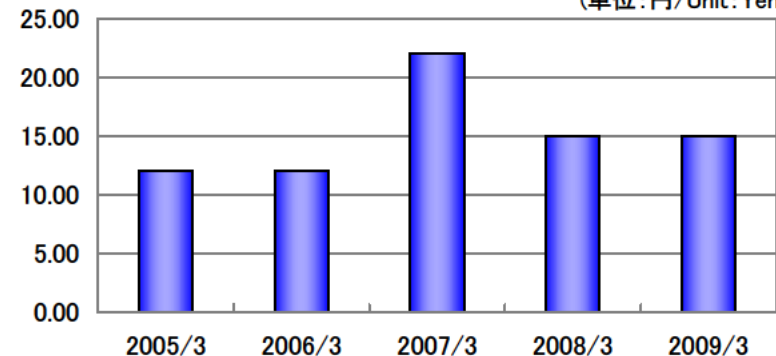
■ 1株当たり当期純利益 Net income per share
 (単位:円/Unit:Yen)



■ 1株当たり純資産額 Net assets per share
 (単位:円/Unit:Yen)



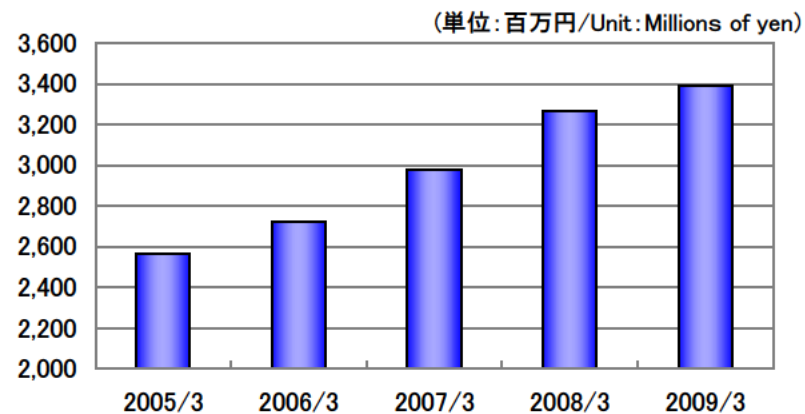
■ 1株当たり配当金 Cash dividends per share
 (単位:円/Unit:Yen)



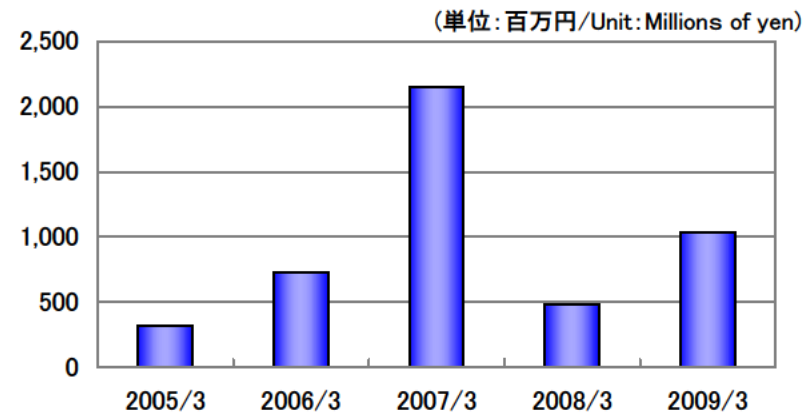
| | | 2005/3 | 2006/3 | 2007/3 | 2008/3 | 2009/3 |
|---------------|--|----------|----------|----------|----------|----------|
| 発行済株式総数(千株) | Number of outstanding shares issued (Thousands of share) | 39,261 | 37,261 | 37,261 | 37,261 | 37,261 |
| (自己株式控除後) | After deduction from treasury stock | 35,615 | 35,576 | 35,548 | 35,030 | 35,022 |
| 1株当たり当期純利益(円) | Net income per share (Yen) | 23.77 | 55.24 | 43.93 | 32.63 | 27.59 |
| 1株当たり純資産額(円) | Net assets per share (Yen) | 1,118.50 | 1,190.91 | 1,238.44 | 1,207.93 | 1,202.02 |
| 1株当たり配当金(円) | Cash dividends per share (Yen) | 12.00 | 12.00 | 22.00 | 15.00 | 15.00 |

その他指標(連結) Other Data (Consolidated)

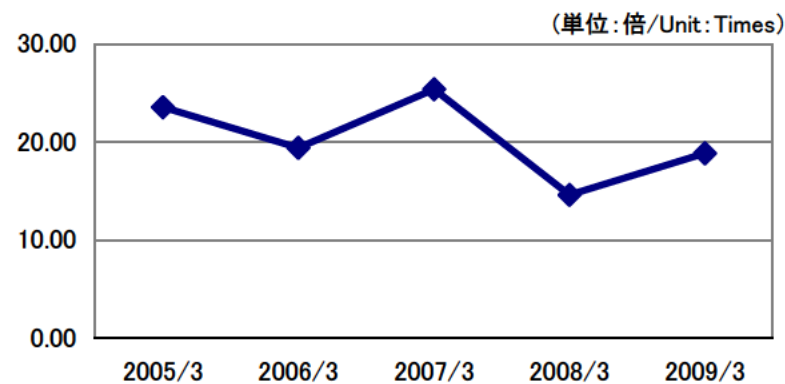
■ 販売費及び一般管理費 Selling, general and administrative expenses



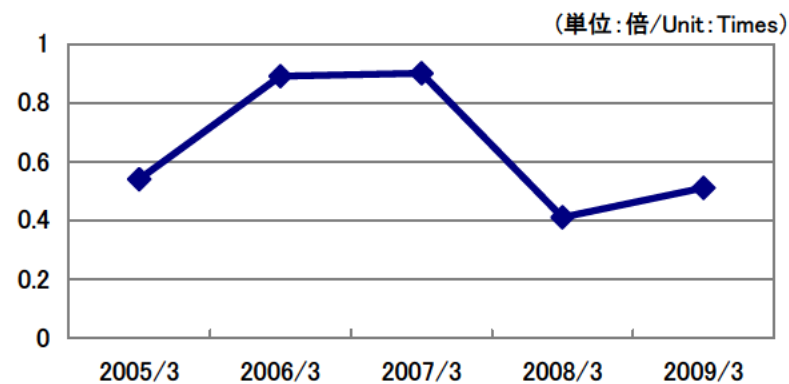
■ 設備投資額 Capital investment



■ 株価収益率 Price earnings ratio



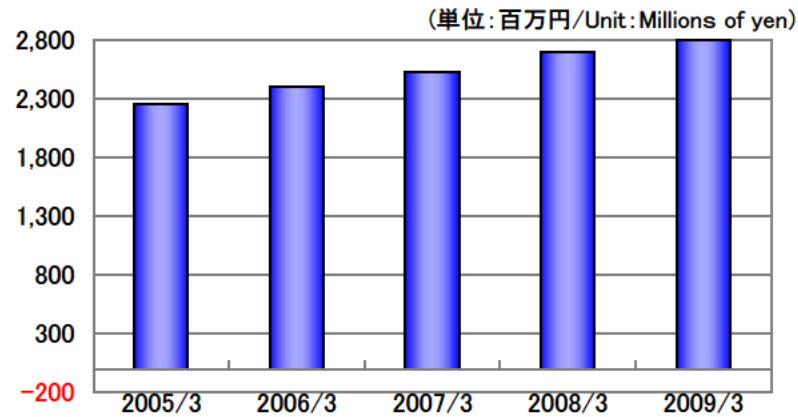
■ 株価純資産倍率 Price book-value ratio



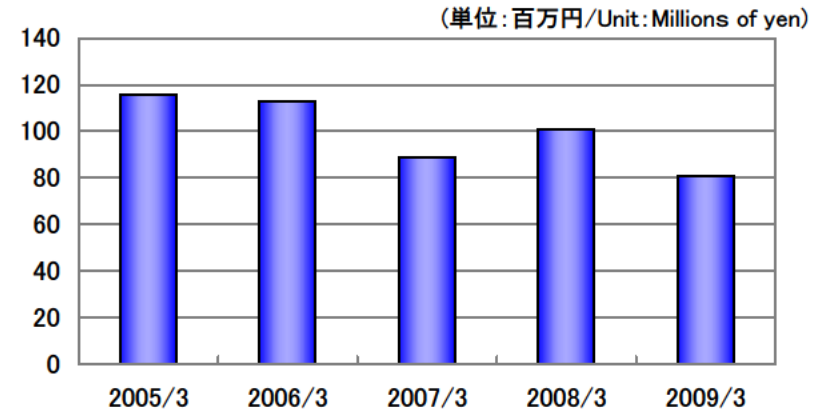
| | | 2005/3 | 2006/3 | 2007/3 | 2008/3 | 2009/3 |
|-----------------|--|--------|--------|--------|--------|--------|
| 販売費及び一般管理費(百万円) | Selling, general and administrative expenses (Millions of yen) | 2,564 | 2,721 | 2,980 | 3,264 | 3,390 |
| 設備投資額(百万円) | Capital investment (Millions of yen) | 313 | 726 | 2,149 | 484 | 1,035 |
| 株価収益率(倍) | Price earnings ratio (Times) | 23.55 | 19.40 | 25.36 | 14.59 | 18.82 |
| 株価純資産倍率(倍) | Price book-value ratio (Times) | 0.54 | 0.89 | 0.90 | 0.41 | 0.51 |

その他指標(個別) Other Data (Non-Consolidated)

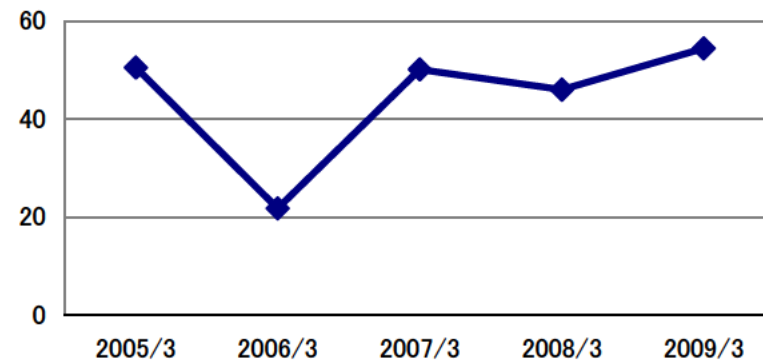
■ 販売費及び一般管理費 Selling, general and administrative expenses



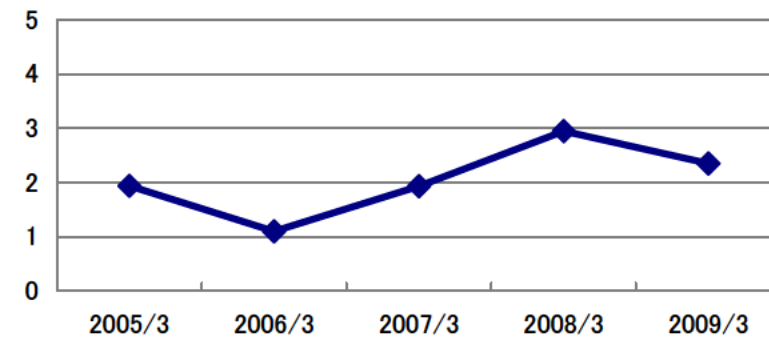
■ 研究開発費 Research and development expenditure



■ 配当性向(%) Dividend payout ratio(%)



■ 配当利回り(%) Dividend yield(%)



| | | 2005/3 | 2006/3 | 2007/3 | 2008/3 | 2009/3 |
|-----------------|--|--------|--------|--------|--------|--------|
| 販売費及び一般管理費(百万円) | Selling, general and administrative expenses (Millions of yen) | 2,254 | 2,402 | 2,531 | 2,702 | 2,805 |
| 研究開発費(百万円) | Research and development expenditure (Millions of yen) | 116 | 113 | 89 | 101 | 81 |
| 配当性向(%) | Dividend payout ratio (%) | 50.48 | 21.72 | 50.08 | 45.97 | 54.37 |
| 配当利回り(%) | Dividend yield (%) | 1.94 | 1.10 | 1.93 | 2.95 | 2.35 |

連結貸借対照表 [資産の部] Consolidated Balance Sheets [Assets]

(単位:百万円/Unit:Millions of yen)

| | | 2005/3 | 2006/3 | 2007/3 | 2008/3 | 2009/3 |
|---------------|-------------------------------------|----------|---------|---------|--------|--------|
| 資産の部 | Assets | | | | | |
| 流動資産 | Current assets | 30,822 | 31,712 | 32,978 | 32,653 | 33,999 |
| 現金預金 | Cash and cash equivalents | 4,457 | 4,793 | 4,735 | 3,692 | 4,065 |
| 受取手形・完成工事未収入金 | Notes and accounts receivable-trade | 12,347 | 12,894 | 12,555 | 11,254 | 13,257 |
| 有価証券 | Marketable securities | 7,561 | 6,203 | 7,040 | 9,316 | 9,123 |
| 未成工事支出金等 | Construction projects in progress | 5,566 | 6,670 | 7,438 | 7,195 | - |
| 未成工事支出金 | Construction projects in progress | - | - | - | - | 6,358 |
| 繰延税金資産 | Deferred tax assets | 671 | 972 | 841 | 963 | 910 |
| その他 | Other | 218 | 178 | 369 | 232 | 304 |
| 貸倒引当金 | Allowance for doubtful accounts | △ 0 | △ 0 | △2 | △1 | △20 |
| 固定資産 | Fixed assets | 25,869 | 29,619 | 30,159 | 27,711 | 26,557 |
| 有形固定資産 | Property and equipment | 15,232 | 15,087 | 16,539 | 16,173 | 15,937 |
| 建物・構築物 | Buildings and structures | 13,126 | 13,006 | 14,776 | 6,488 | 6,608 |
| 機械・運搬具 | Machinery and vehicles | 1,963 | 2,017 | 2,040 | 321 | 276 |
| 工具器具・備品 | Tools and equipment | 3,334 | 3,490 | 3,566 | 582 | 551 |
| 土地 | Land | 8,754 | 8,575 | 8,575 | 8,575 | 8,246 |
| リース資産 | Lease | - | - | - | - | 4 |
| 建設仮勘定 | Construction in progress | 0 | 169 | 4 | 206 | 250 |
| 減価償却累計額 | Accumulated depreciation | △ 11,946 | △12,171 | △12,423 | - | - |
| 無形固定資産 | Intangible fixed assets | 87 | 144 | 198 | 182 | 161 |
| 投資その他の資産 | Investments and other assets | 10,548 | 14,386 | 13,421 | 11,355 | 10,458 |
| 投資有価証券 | Investment securities | 8,604 | 12,704 | 12,576 | 9,819 | 8,526 |
| 長期貸付金 | Long-term loans receivable | 14 | 7 | 3 | 2 | 6 |
| 繰延税金資産 | Deferred tax assets | 1,174 | 548 | 112 | 1,099 | 1,586 |
| その他 | Other | 853 | 1,215 | 818 | 521 | 434 |
| 貸倒引当金 | Allowance for doubtful accounts | △ 97 | △ 89 | △89 | △86 | △96 |
| 資産合計 | Total assets | 56,692 | 61,331 | 63,138 | 60,364 | 60,557 |

※当連結会計年度において、有形固定資産の表示については、前連結会計年度まで間接控除形式で表示していたが、当連結会計年度より直接控除形式に変更しています。(なお、前連結会計年度と同様の形式による当連結減価償却累計額は△12,914百万円)

連結貸借対照表 [負債/資本の部] Consolidated Balance Sheets [Liabilities/Shareholders' Equity]

(単位:百万円/Unit:Millions of yen)

| | | 2005/3 | 2006/3 | 2007/3 | 2008/3 | 2009/3 |
|--------------|--|---------|--------|--------|--------|--------|
| 負債の部 | Liabilities | | | | | |
| 流動負債 | Current liabilities | 9,232 | 11,411 | 10,949 | 10,510 | 10,412 |
| 支払手形・工事未払金等 | Notes and accounts payable-trade | 5,573 | 5,588 | 6,112 | 5,554 | 5,429 |
| 短期借入金 | Short-term borrowings | 300 | 300 | 716 | 686 | 553 |
| 未払法人税等 | Accrued incom taxes | 700 | 1,650 | 477 | 511 | 779 |
| 未成工事受入金 | Advances received on construction projects in progress | 656 | 1,075 | 795 | 1,123 | 957 |
| 役員賞与引当金 | Allowance for bonuses to directors | - | - | 43 | 43 | 44 |
| 完成工事補償引当金 | Allowance for compensation for construction damages | 12 | 25 | 16 | 15 | 23 |
| 工事損失引当金 | Allowance for losses on construction contracts | 32 | 542 | 281 | 295 | 418 |
| その他 | Other | 1,956 | 2,230 | 2,505 | 2,280 | 2,206 |
| 固定負債 | Long-term liabilities | 6,441 | 6,329 | 6,854 | 6,217 | 6,387 |
| 長期借入金 | Long-term debt | - | - | 200 | 225 | 258 |
| 繰延税金負債 | Deferred tax liabilities | 9 | 6 | 88 | 14 | 16 |
| 退職給付引当金 | Accrued retirement benefits | 6,288 | 6,164 | 5,956 | 5,613 | 5,877 |
| 役員退職慰労引当金 | Allowance for retirement benefits for directors and auditors | 93 | 102 | 86 | 85 | 25 |
| その他 | Other | 49 | 56 | 522 | 278 | 210 |
| 負債合計 | Total liabilities | 15,674 | 17,741 | 17,803 | 16,728 | 16,800 |
| 資本の部 | Shareholders' equity | | | | | |
| 資本金 | Common stock | 2,881 | 2,881 | - | - | - |
| 資本剰余金 | Capital surplus | 3,723 | 3,725 | - | - | - |
| 利益剰余金 | Retained earnings | 33,645 | 34,465 | - | - | - |
| その他有価証券評価差額金 | Net unrealized holding gain on available-for-sale securities | 2,082 | 3,146 | - | - | - |
| 自己株式 | Treasury stock | △ 1,314 | △ 627 | - | - | - |
| 資本合計 | Total shareholders' equity | 41,017 | 43,590 | - | - | - |
| 純資産の部 | Net assets | | | | | |
| 資本金 | Common stock | - | - | 2,881 | 2,881 | 2,881 |
| 資本剰余金 | Capital surplus | - | - | 3,727 | 3,728 | 3,729 |
| 利益剰余金 | Retained earnings | - | - | 35,419 | 35,998 | 36,662 |
| 自己株式 | Treasury stock | - | - | △ 658 | △ 966 | △ 973 |
| 株主資本合計 | Total shareholders' equity | - | - | 41,369 | 41,642 | 42,300 |
| その他有価証券評価差額金 | Net unrealized holding gain on available-for-sale securities | - | - | 3,865 | 1,962 | 1,311 |
| 少数株主持分 | Minority interests | - | - | 98 | 31 | 144 |
| 純資産合計 | Total net assets | - | - | 45,334 | 43,636 | 43,756 |
| 負債・純資産(資本)合計 | Total liabilities, net assets (Shareholders' equity) | 56,692 | 61,331 | 63,138 | 60,364 | 60,557 |

連結損益計算書 Consolidated Statements of Operations

| | | (単位:百万円/Unit:Millions of yen) | | | | |
|----------------|--|-------------------------------|--------|--------|--------|--------|
| | | 2005/3 | 2006/3 | 2007/3 | 2008/3 | 2009/3 |
| 売上高 (完成工事高) | Net sales | 45,034 | 47,354 | 48,490 | 52,090 | 52,936 |
| 売上原価 (完成工事原価) | Cost of sales | 40,972 | 41,001 | 42,915 | 46,509 | 47,450 |
| 売上総利益(完成工事総利益) | Gross profit | 4,062 | 6,353 | 5,575 | 5,580 | 5,486 |
| 販売費及び一般管理費 | Selling, general and administrative expenses | 2,564 | 2,721 | 2,980 | 3,264 | 3,390 |
| 営業利益 | Operating income | 1,497 | 3,631 | 2,595 | 2,316 | 2,095 |
| 営業外収益 | Non-operating income | 180 | 206 | 205 | 351 | 364 |
| 営業外費用 | Non-operating expenses | 18 | 16 | 47 | 159 | 18 |
| 経常利益 | Ordinary income | 1,659 | 3,822 | 2,753 | 2,508 | 2,442 |
| 特別利益 | Extraordinary income | 100 | 43 | 69 | 5 | 324 |
| 特別損失 | Extraordinary loss | 70 | 244 | 20 | 420 | 360 |
| 税金等調整前当期純利益 | Income before income taxes | 1,689 | 3,621 | 2,802 | 2,093 | 2,407 |
| 法人税、住民税及び事業税 | Income taxes-current | 737 | 1,986 | 1,036 | 795 | 1,092 |
| 法人税等調整額 | Income taxes-deferred | △ 22 | △ 408 | 159 | 128 | 12 |
| 当期純利益 | Net income | 973 | 2,043 | 1,601 | 1,237 | 1,189 |

連結キャッシュフロー計算書 Consolidated Statements of Cash Flows

| | | (単位:百万円/Unit:Millions of yen) | | | | |
|------------------|--|-------------------------------|---------|---------|---------|--------|
| | | 2005/3 | 2006/3 | 2007/3 | 2008/3 | 2009/3 |
| 営業活動によるキャッシュ・フロー | Cash flows from operating activities | 5,298 | 2,651 | 656 | 3,704 | 1,297 |
| 投資活動によるキャッシュ・フロー | Cash flows from investment activities | △ 5,912 | △ 2,368 | △ 1,213 | △ 4,783 | △ 658 |
| 財務活動によるキャッシュ・フロー | Cash flows from financing activities | △ 376 | △ 499 | △ 422 | △ 966 | △ 629 |
| 現金及び現金同等物の増減額 | Net increase (decrease) in cash and cash equivalents | △ 991 | △ 216 | △ 979 | △ 2,047 | 9 |
| 現金及び現金同等物の期首残高 | Cash and cash equivalents at beginning of year | 6,900 | 5,909 | 5,693 | 5,223 | 3,176 |
| 現金及び現金同等物の期末残高 | Cash and cash equivalents at end of year | 5,909 | 5,693 | 5,223 | 3,176 | 3,186 |

貸借対照表 [資産の部] Non-Consolidated Balance Sheets [Assets]

| | | (単位:百万円/Unit: Millions of yen) | | | | |
|-----------------|---|--------------------------------|--------|--------|--------|--------|
| | | 2005/3 | 2006/3 | 2007/3 | 2008/3 | 2009/3 |
| 資産の部 | Assets | | | | | |
| 流動資産 | Current assets | 30,031 | 30,778 | 30,199 | 29,977 | 30,624 |
| 現金預金 | Cash and cash equivalents | 3,655 | 3,903 | 3,081 | 2,280 | 2,033 |
| 受取手形 | Notes receivable | 125 | 95 | 658 | 176 | 210 |
| 完成工事未収入金 | Accounts receivable-trade | 12,167 | 12,672 | 11,303 | 10,219 | 12,294 |
| 有価証券 | Marketable securities | 7,561 | 6,203 | 6,880 | 9,316 | 9,123 |
| 未成工事支出金 | Construction projects in progress | 5,416 | 6,592 | 7,168 | 6,743 | 5,769 |
| 材料貯蔵品 | Stock of materials | 71 | 89 | 78 | 113 | - |
| 繰延税金資産 | Deferred tax assets | 635 | 924 | 786 | 822 | 852 |
| その他 | Other | 397 | 296 | 240 | 304 | 341 |
| 固定資産 | Fixed assets | 25,069 | 28,890 | 29,284 | 26,794 | 25,880 |
| 有形固定資産 | Property and equipment | 13,976 | 13,657 | 14,545 | 14,141 | 13,764 |
| 建物・構築物 | Buildings and structures | 5,296 | 5,014 | 5,831 | 5,484 | 5,108 |
| 機械・運搬具 | Machinery and vehicles | 133 | 198 | 270 | 220 | 203 |
| 工具器具・備品 | Tools and equipment | 243 | 319 | 318 | 287 | 349 |
| 土地 | Land | 8,302 | 8,123 | 8,123 | 8,123 | 7,795 |
| リース資産 | Lease | - | - | - | - | 57 |
| 建設仮勘定 | Construction in progress | 0 | - | - | 24 | 248 |
| 無形固定資産 | Intangible fixed assets | 83 | 130 | 184 | 170 | 143 |
| ソフトウェア | Software | 55 | 52 | 161 | 141 | 119 |
| その他 | Other | 26 | 75 | 22 | 27 | 24 |
| 投資その他の資産 | Investments and other assets | 11,010 | 15,102 | 14,555 | 12,482 | 11,972 |
| 投資有価証券 | Investment securities | 8,579 | 12,676 | 12,565 | 9,812 | 8,519 |
| 関係会社株式 | Investment securities of affiliated companies | 231 | 231 | 236 | 236 | 236 |
| 長期貸付金 | Long-term loans receivable | 422 | 676 | 1,151 | 1,230 | 1,525 |
| 繰延税金資産 | Deferred tax assets | 1,084 | 447 | - | 973 | 1,468 |
| その他 | Other | 790 | 1,160 | 691 | 316 | 309 |
| 貸倒引当金 | Allowance for doubtful accounts | △ 97 | △ 89 | △ 89 | △ 86 | △ 86 |
| 資産合計 | Total assets | 55,100 | 59,668 | 59,483 | 56,771 | 56,505 |

貸借対照表 [負債/資本の部] Non-Consolidated Balance Sheets [Liabilities/Shareholders' Equity]

(単位:百万円/Unit:Millions of yen)

| | | 2005/3 | 2006/3 | 2007/3 | 2008/3 | 2009/3 |
|--------------|--|---------|--------|--------|--------|--------|
| 負債の部 | Liabilities | | | | | |
| 流動負債 | Current liabilities | 8,916 | 11,081 | 9,403 | 8,848 | 8,501 |
| 工事未払金 | Accounts payable-trade | 5,377 | 5,453 | 5,375 | 4,669 | 4,697 |
| 短期借入金 | Short-term borrowings | 300 | 300 | 300 | 300 | 300 |
| リース債務 | Lease | - | - | - | - | 16 |
| 未払費用 | Accrued expense | 1,352 | 1,333 | 1,343 | 1,378 | 1,400 |
| 未払法人税等 | Accrued income taxes | 674 | 1,602 | 409 | 449 | 700 |
| 未成工事受入金 | Advances received on construction projects in progress | 648 | 1,049 | 619 | 1,047 | 309 |
| 完成工事補償引当金 | Allowance for compensation for construction damages | 12 | 25 | 16 | 15 | 21 |
| 工事損失引当金 | Allowance for losses on construction contracts | 32 | 540 | 280 | 291 | 412 |
| その他 | Other | 517 | 775 | 1,056 | 695 | 642 |
| 固定負債 | Long-term liabilities | 6,318 | 6,189 | 6,055 | 5,610 | 5,905 |
| リース債務 | Lease | - | - | - | - | 46 |
| 退職給付引当金 | Accrued retirement benefits | 6,212 | 6,074 | 5,861 | 5,512 | 5,772 |
| 役員退職慰労引当金 | Allowance for retirement benefits for directors and auditors | 69 | 78 | 60 | 62 | - |
| その他 | Other | 36 | 36 | 132 | 35 | 86 |
| 負債合計 | Total liabilities | 15,234 | 17,270 | 15,459 | 14,458 | 14,407 |
| 資本の部 | Shareholders' equity | | | | | |
| 資本金 | Common stock | 2,881 | 2,881 | - | - | - |
| 資本剰余金 | Capital Surplus | 3,723 | 3,725 | - | - | - |
| 利益剰余金 | Retained earnings | 32,498 | 33,280 | - | - | - |
| その他 | Net unrealized holding gain on available-for-sale securities | 2,076 | 3,138 | - | - | - |
| 自己株式 | Treasury stock | △ 1,314 | △ 627 | - | - | - |
| 資本合計 | Total shareholders' equity | 39,865 | 42,398 | - | - | - |
| 純資産の部 | Net assets | | | | | |
| 資本金 | Common stock | - | - | 2,881 | 2,881 | 2,881 |
| 資本剰余金 | Capital surplus | - | - | 3,727 | 3,728 | 3,729 |
| 利益剰余金 | Retained earnings | - | - | 34,208 | 34,707 | 35,148 |
| 自己株式 | Treasury stock | - | - | △ 658 | △ 966 | △ 973 |
| 株主資本合計 | Total shareholders' equity | - | - | 40,158 | 40,351 | 40,785 |
| 評価・換算差額等合計 | Total valuation and translation adjustments | - | - | 3,866 | 1,962 | 1,311 |
| 純資産合計 | Total net assets | - | - | 44,024 | 42,313 | 42,097 |
| 負債・純資産(資本)合計 | Total liabilities, net assets (Shareholders' equity) | 55,100 | 59,668 | 59,483 | 56,771 | 56,505 |

損益計算書 Non-Consolidated Statements of Operations

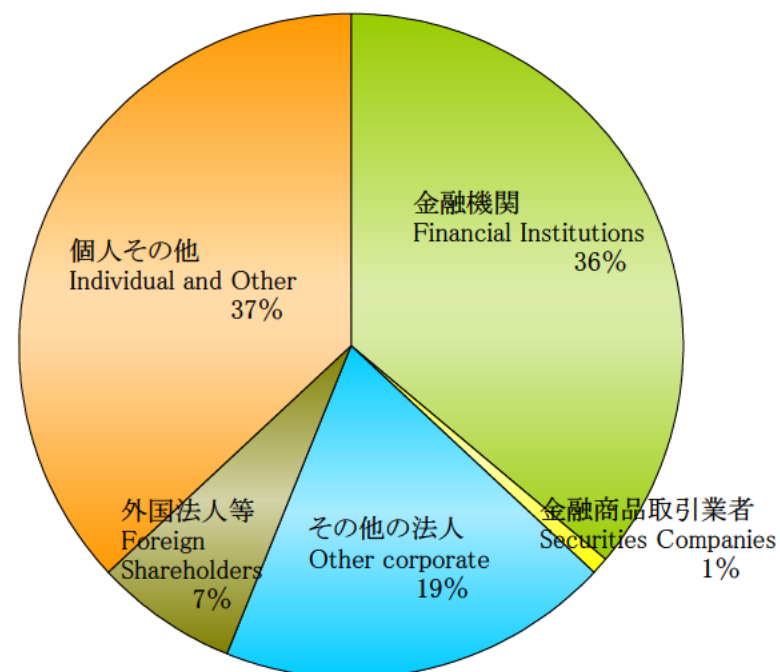
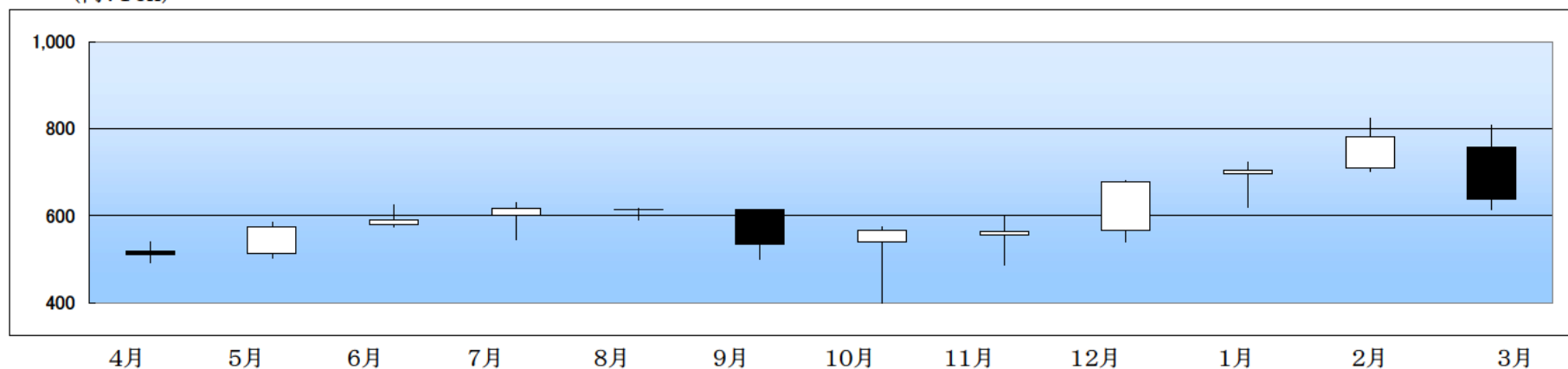
(単位: 百万円/Unit: Millions of yen)

| | | 2005/3 | 2006/3 | 2007/3 | 2008/3 | 2009/3 |
|----------------|--|--------|--------|--------|--------|--------|
| 売上高 (完成工事高) | Net sales | 44,645 | 46,736 | 46,807 | 49,116 | 50,126 |
| 売上原価 (完成工事原価) | Cost of sales | 41,086 | 40,869 | 41,784 | 44,360 | 45,741 |
| 売上総利益(完成工事総利益) | Gross profit | 3,559 | 5,867 | 5,022 | 4,755 | 4,384 |
| 販売費及び一般管理費 | Selling, general and administrative expenses | 2,254 | 2,402 | 2,531 | 2,702 | 2,805 |
| 営業利益 | Operating income | 1,304 | 3,464 | 2,490 | 2,053 | 1,579 |
| 営業外収益 | Non-operating income | 214 | 242 | 216 | 297 | 320 |
| 営業外費用 | Non-operating expenses | 18 | 16 | 35 | 141 | 4 |
| 経常利益 | Ordinary income | 1,499 | 3,690 | 2,671 | 2,210 | 1,895 |
| 特別利益 | Extraordinary income | 99 | 42 | 54 | - | 321 |
| 特別損失 | Extraordinary loss | 64 | 190 | 4 | 140 | 342 |
| 税引前当期純利益 | Income before income taxes | 1,534 | 3,541 | 2,721 | 2,069 | 1,874 |
| 法人税、住民税及び事業税 | Income taxes-current | 701 | 1,925 | 974 | 709 | 986 |
| 法人税等調整額 | Income taxes-deferred | △ 44 | △ 380 | 184 | 203 | △ 78 |
| 当期純利益 | Net income | 876 | 1,996 | 1,562 | 1,156 | 966 |

会社概況 Corporate Information

| | |
|---------------------------------|--|
| 商号 Company Name | 株式会社東京エネシス TOKYO ENERGY & SYSTEMS INC. |
| 本店所在地 Address of Head Office | 〒105-0004 東京都港区新橋六丁目9番7号 9-7 Shimbashi 6-chome, Minato-ku, Tokyo, Japan |
| 設立 Established | 1947年(昭和22年)8月14日 August 14, 1947 |
| 資本金 Capital | 28億81百万円 2,881millions of yen |
| 株式上市 Exchange | 東京証券取引所 市場第一部(証券コード1945) Tokyo Stock Exchange, First Section (Code: 1945) |
| 従業員数 Number of Employees | 1,400名(H21.3.31現在) 1,400 |
| ホームページアドレス URL | http://www.qtes.co.jp/ http://www.qtes.co.jp/ |

所有者別分布状況 Shareholders by Category

株価の推移 Stock Price Range
(円:Yen)

株式会社東京エネシス お客様本部 広報室

TOKYO ENERGY & SYSTEMS INC.

Public Relations Division

TEL 03-6371-5260

FAX 03-3434-0951

URL <http://www.qtes.co.jp>