

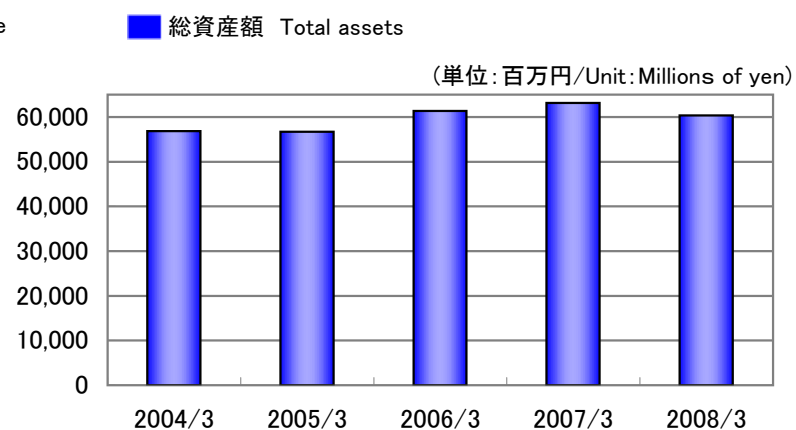
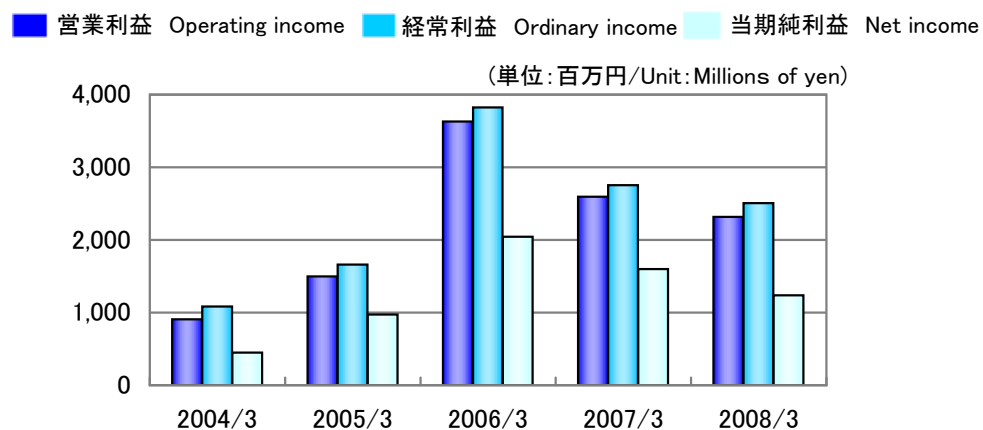
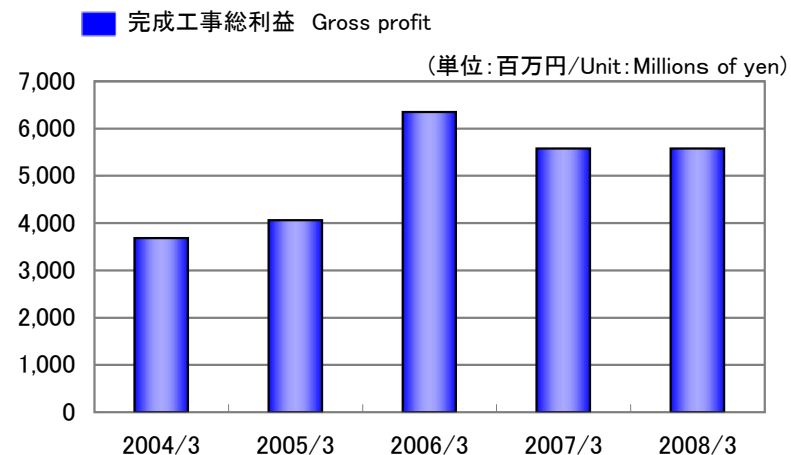
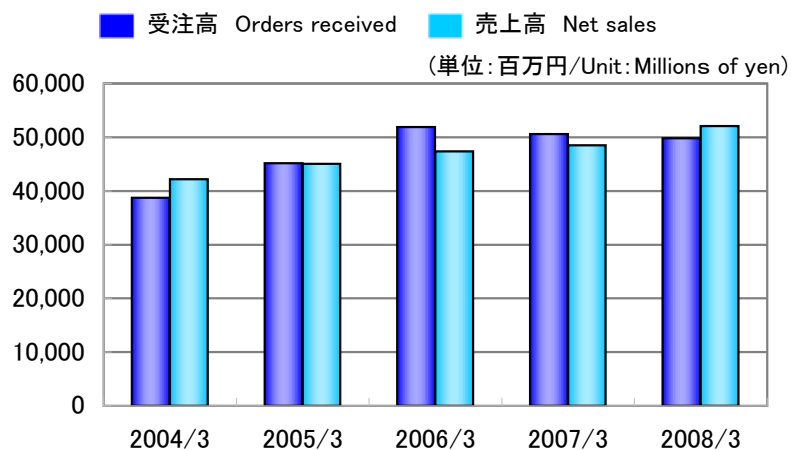
Fact Book 2007

株式会社東京エネシス
TOKYO ENERGY & SYSTEMS INC.

Fact Sheet 2008 目次

業績ハイライト(連結) Financial Highlights (Consolidated)	1
業績ハイライト(個別) Financial Highlights (Non-Consolidated)	2
部門別受注高(連結) Orders Received by Business Category (Consolidated)	3
部門別受注高(個別) Orders Received by Business Category (Non-Consolidated)	4
部門別売上高(連結) Net Sales by Business Category (Consolidated)	5
部門別売上高(個別) Net Sales by Business Category (Non-Consolidated)	6
得意先別売上高(個別) Net Sales by Client (Non-Consolidated)	7
収益性指標(連結) Profitability (Consolidated)	8
安全性指標(連結) Stability (Consolidated)	9
従業員1人当たり指標(連結) Per Employee (Consolidated)	10
1株当たり指標(個別) Per Share Data (Non-Consolidated)	11
その他指標(連結) Other Data (Consolidated)	12
その他指標(個別) Other Data (Non-Consolidated)	13
連結貸借対照表 [資産の部] Consolidated Balance Sheets [Assets]	14
連結貸借対照表 [負債/資本の部] Consolidated Balance Sheets [Liabilities/Shareholders' Equity]	15
連結損益計算書 Consolidated Statements of Operations	16
連結キャッシュフロー計算書 Consolidated Statements of Cash Flows	16
貸借対照表 [資産の部] Non-Consolidated Balance Sheets [Assets]	17
貸借対照表 [負債/資本の部] Non-Consolidated Balance Sheets [Liabilities/Shareholders' Equity]	18
損益計算書 Non-Consolidated Statements of Operations	19
会社概況 Corporate Information	20

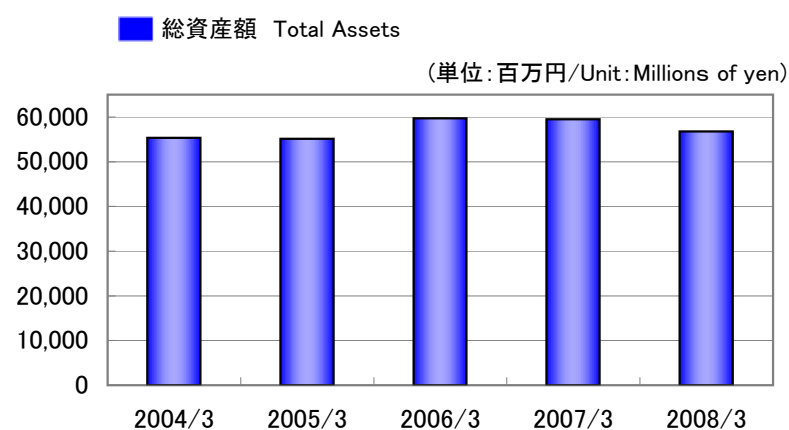
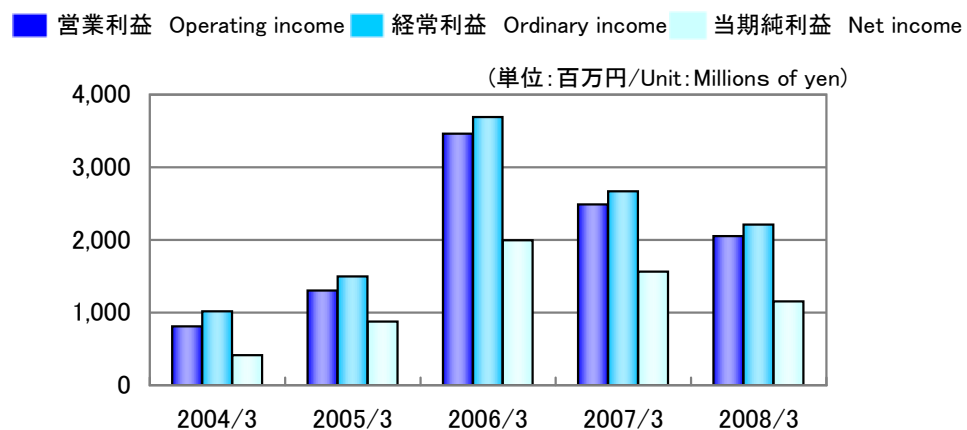
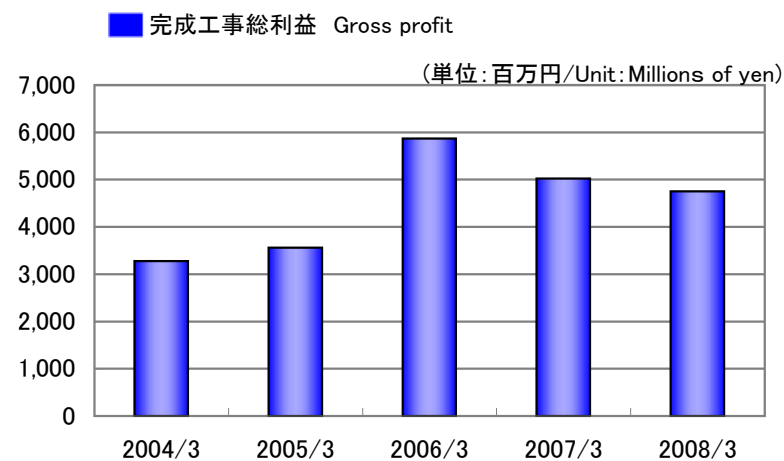
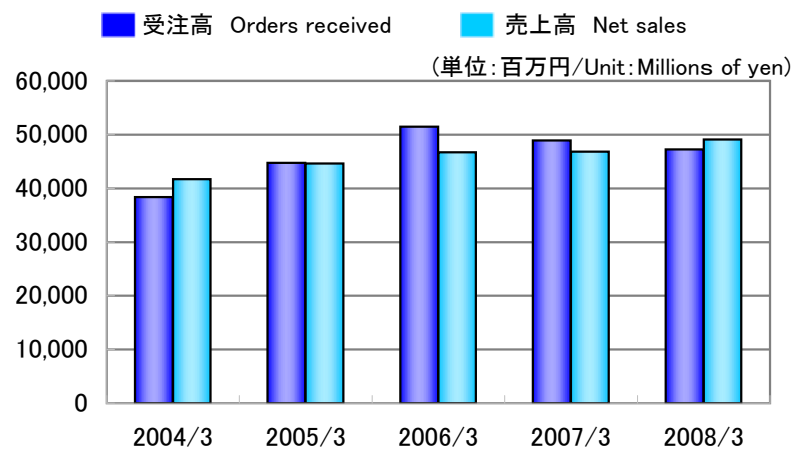
業績ハイライト(連結) Financial Highlights (Consolidated)



(単位:百万円/Unit:Millions of yen)

		2004/3	2005/3	2006/3	2007/3	2008/3
受注高	Orders received	38,704	45,192	51,907	50,568	49,812
売上高(完成工事高)	Net sales	42,198	45,034	47,354	48,490	52,090
完成工事総利益	Gross profit	3,680	4,062	6,353	5,575	5,580
営業利益	Operating income	907	1,497	3,631	2,595	2,316
経常利益	Ordinary income	1,082	1,659	3,822	2,753	2,508
当期純利益	Net income	451	973	2,043	1,601	1,237
総資産額	Total assets	56,867	56,692	61,331	63,138	60,364

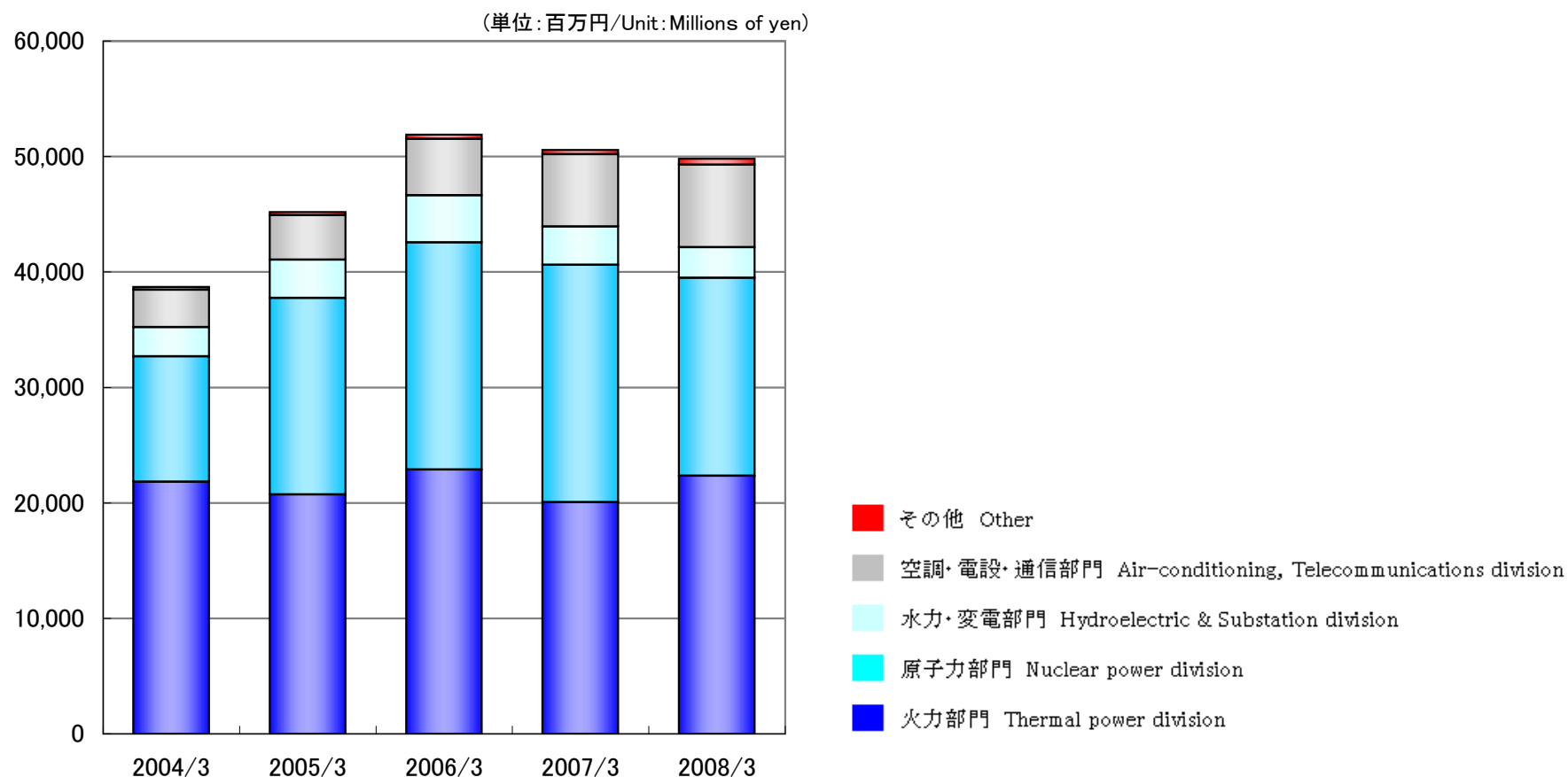
業績ハイライト(個別) Financial Highlights (Non-Consolidated)



(単位: 百万円/Unit: Millions of yen)

		2004/3	2005/3	2006/3	2007/3	2008/3
受注高	Orders received	38,392	44,767	51,484	48,940	47,244
売上高 (完成工事高)	Net sales	41,734	44,645	46,736	46,807	49,116
完成工事総利益	Gross profit	3,278	3,559	5,867	5,022	4,755
営業利益	Operating income	811	1,304	3,464	2,490	2,053
経常利益	Ordinary income	1,017	1,499	3,690	2,671	2,210
当期純利益	Net income	413	876	1,996	1,562	1,156
総資産額	Total assets	55,324	55,100	59,668	59,483	56,771

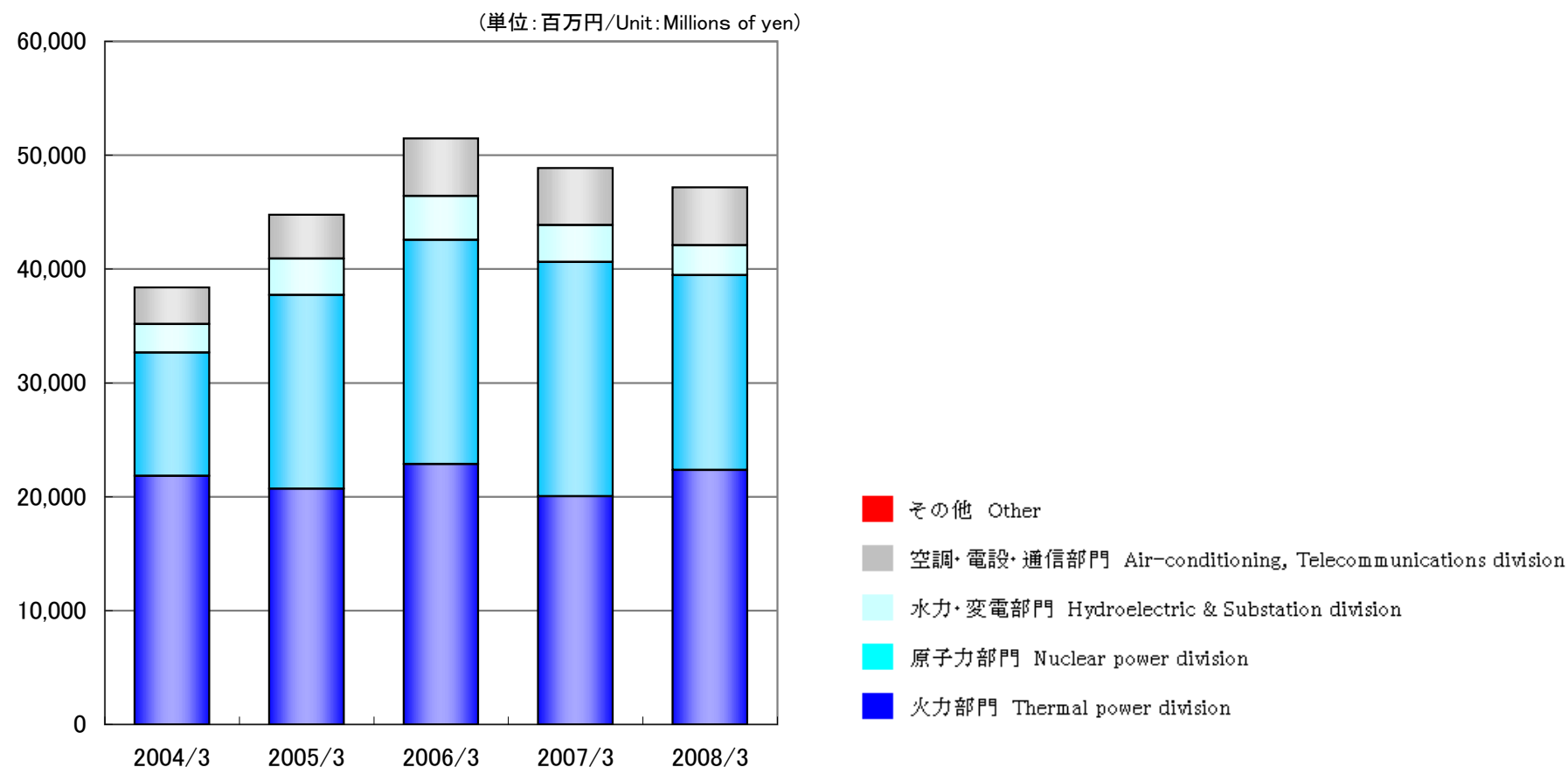
部門別受注高(連結) Orders Received by Business Category (Consolidated)



(単位: 百万円/Unit: Millions of yen)

		2004/3	2005/3	2006/3	2007/3	2008/3
火力部門	Thermal power division	21,840	20,727	22,885	20,055	22,351
原子力部門	Nuclear power division	10,841	17,016	19,687	20,571	17,135
水力・変電部門	Hydroelectric & Substation division	2,543	3,331	4,076	3,312	2,664
空調・電設・通信部門	Air-conditioning, Telecommunications division	3,228	3,845	4,871	6,271	7,130
その他部門	Other	249	272	385	357	531
合計	Total	38,704	45,192	51,907	50,568	49,812

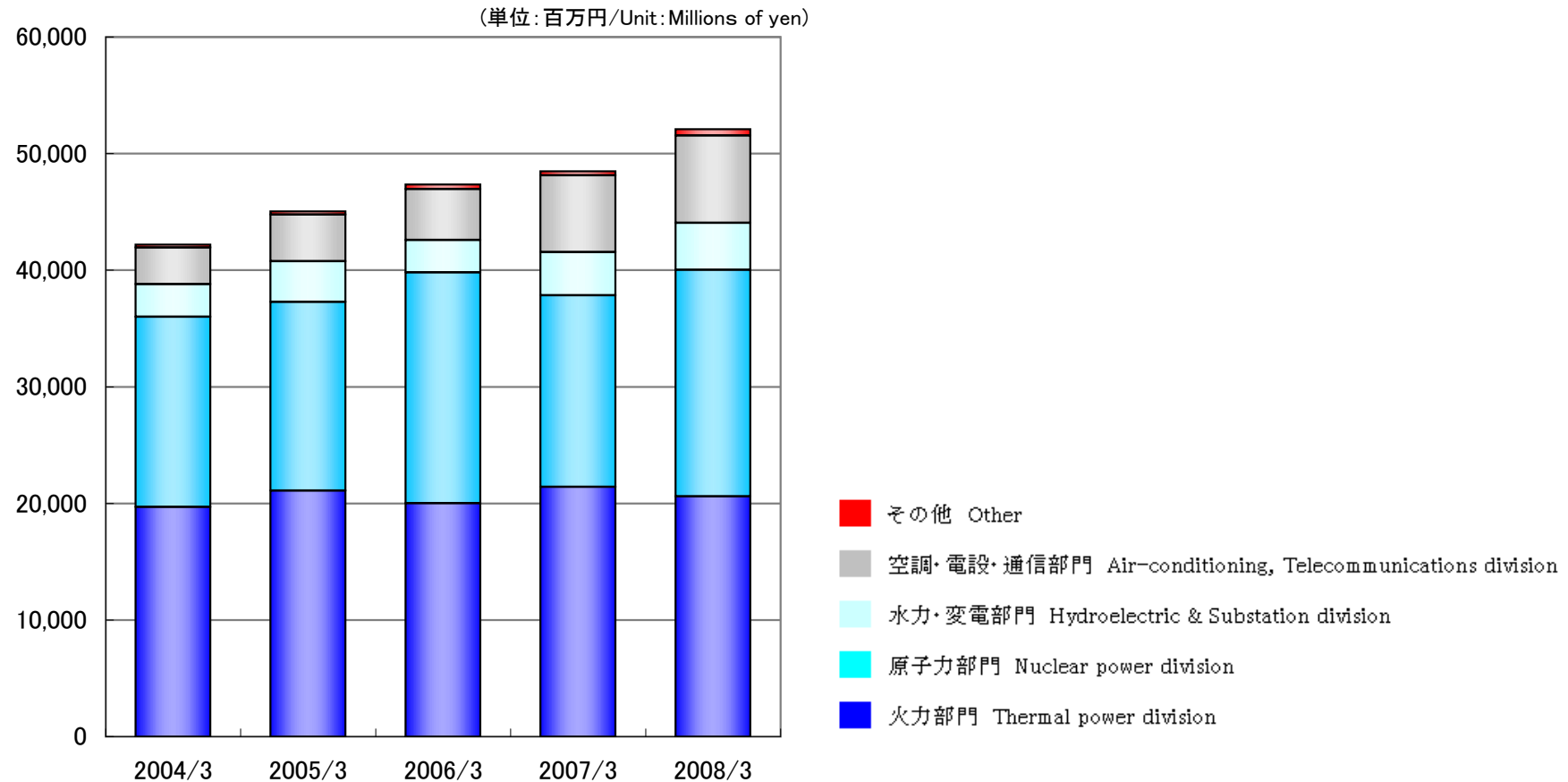
部門別受注高(個別) Orders Received by Business Category (Non-Consolidated)



(単位: 百万円/Unit: Millions of yen)

		2004/3	2005/3	2006/3	2007/3	2008/3
火力部門	Thermal power division	21,826	20,708	22,868	20,046	22,340
原子力部門	Nuclear power division	10,841	17,016	19,687	20,571	17,135
水力・変電部門	Hydroelectric & Substation division	2,491	3,202	3,874	3,247	2,627
空調・電設・通信部門	Air-conditioning, Telecommunications division	3,233	3,840	5,054	5,015	5,066
その他	Other	-	-	-	59	74
合計	Total	38,392	44,767	51,484	48,940	47,244

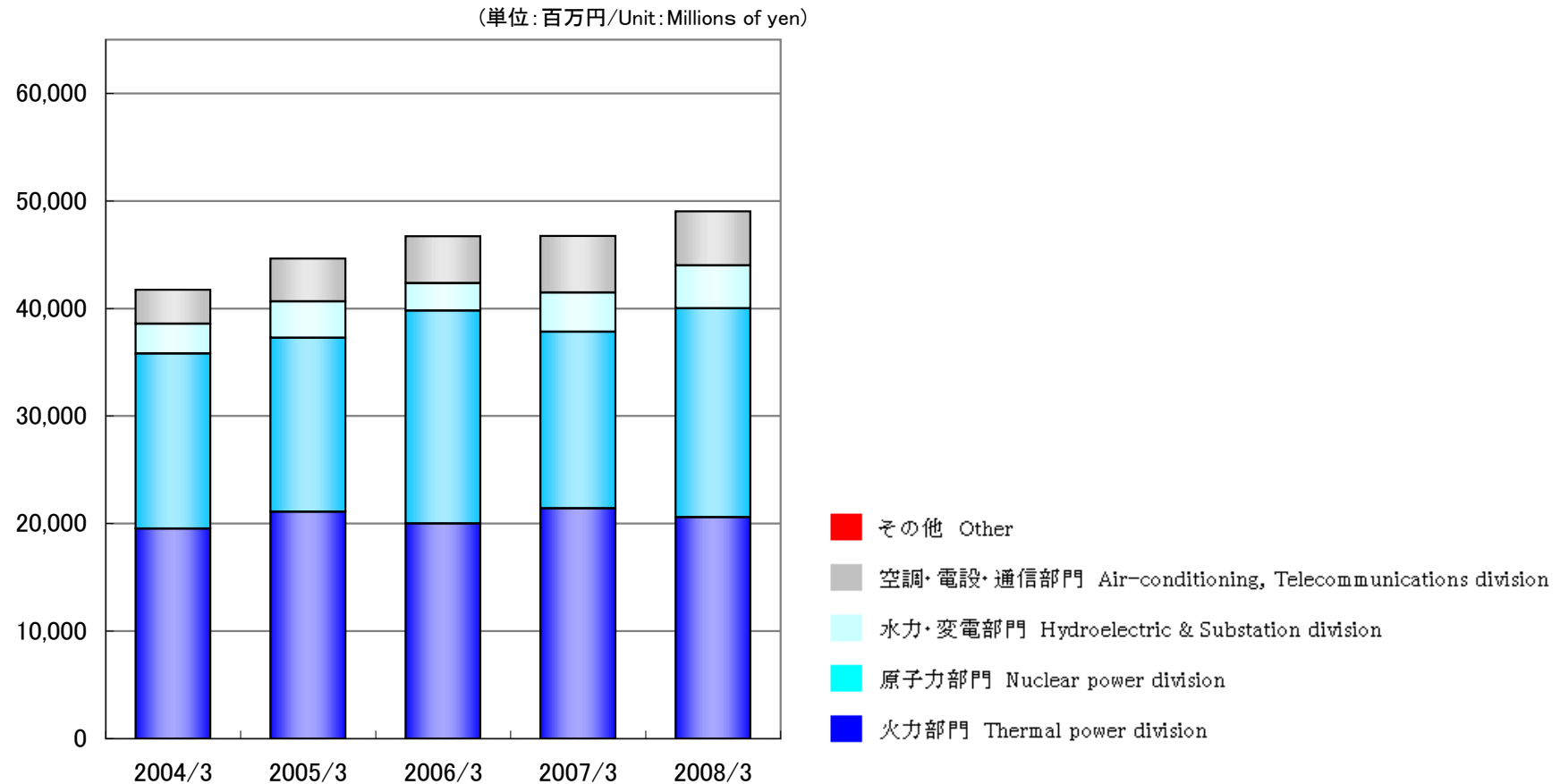
部門別売上高(連結) Net Sales by Business Category (Consolidated)



(単位:百万円/Unit: Millions of yen)

		2004/3	2005/3	2006/3	2007/3	2008/3
火力部門	Thermal power division	19,707	21,109	20,024	21,418	20,606
原子力部門	Nuclear power division	16,288	16,169	19,797	16,422	19,431
水力・変電部門	Hydroelectric & Substation division	2,808	3,487	2,776	3,718	4,032
空調・電設・通信部門	Air-conditioning, Telecommunications division	3,145	3,997	4,369	6,572	7,488
その他部門	Other	249	272	385	357	531
合計	Total	42,198	45,034	47,354	48,490	52,090

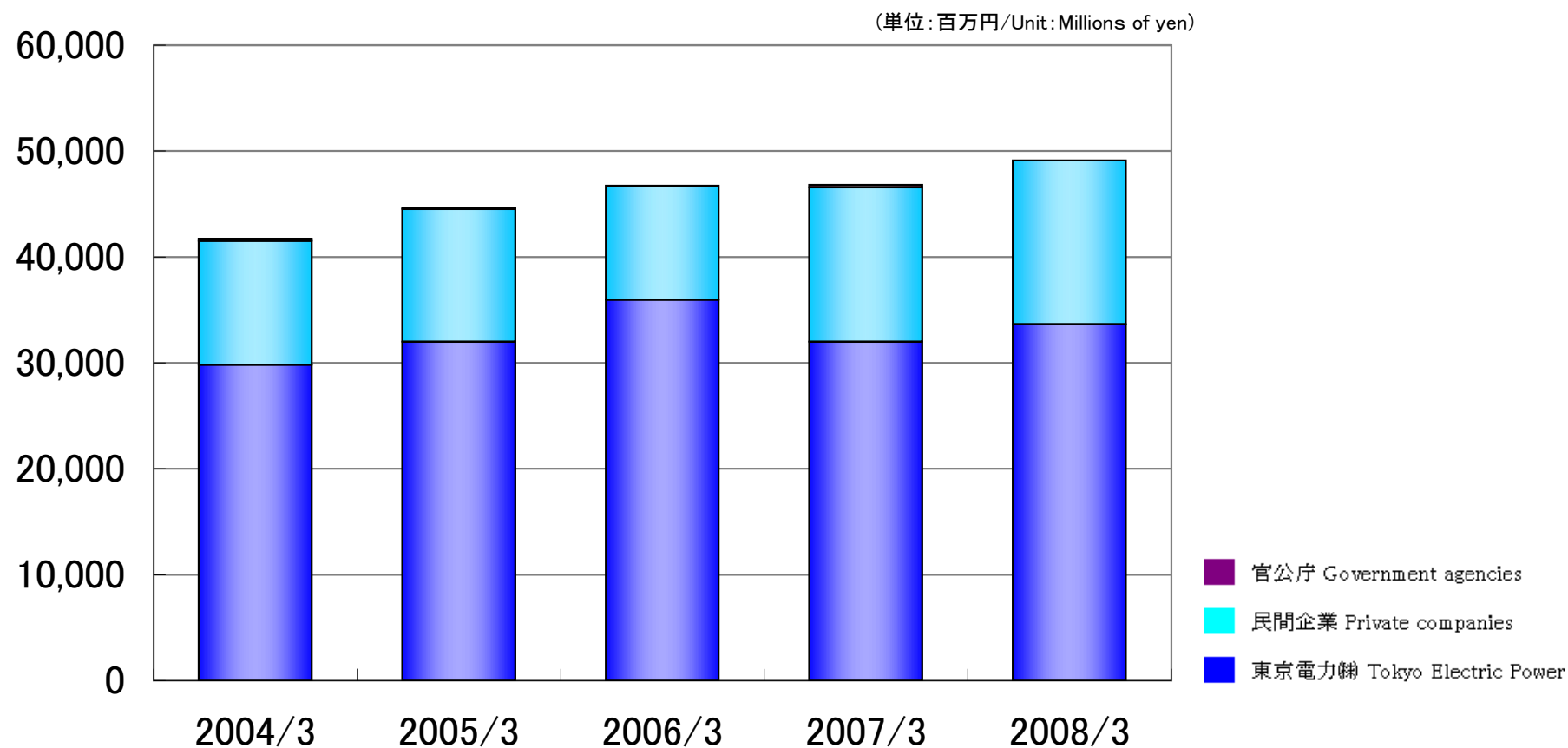
部門別売上高(個別) Net Sales by Business Category (Non-Consolidated)



(単位: 百万円/Unit: Millions of yen)

		2004/3	2005/3	2006/3	2007/3	2008/3
火力部門	Thermal power division	19,533	21,103	20,006	21,410	20,585
原子力部門	Nuclear power division	16,288	16,169	19,797	16,422	19,431
水力・変電部門	Hydroelectric & Substation division	2,763	3,380	2,559	3,639	3,986
空調・電設・通信部門	Air-conditioning, Telecommunications division	3,149	3,992	4,372	5,275	5,038
その他	Other	-	-	-	59	74
合計	Total	41,734	44,645	46,736	46,807	49,116

得意先別売上高(個別) Net Sales by Client (Non-Consolidated)

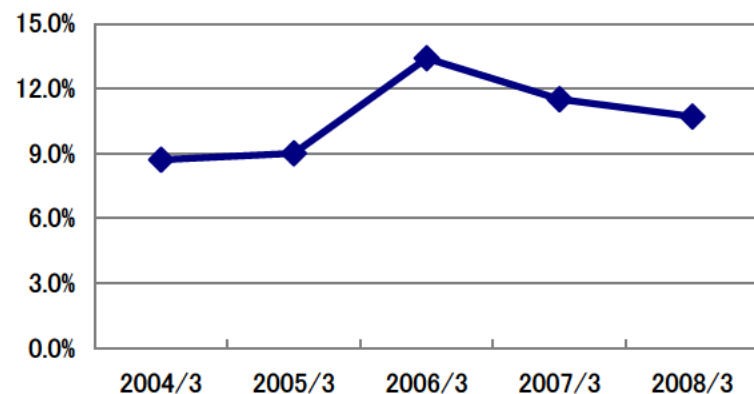


(単位:百万円/Unit:Millions of yen)

		2004/3	2005/3	2006/3	2007/3	2008/3
東京電力株	Tokyo Electric Power	29,811	31,986	35,956	32,004	33,636
民間企業	Private companies	11,707	12,545	10,776	14,565	15,479
官公庁	Government agencies	216	114	4	238	1
合計	Total	41,734	44,645	46,736	46,807	49,116

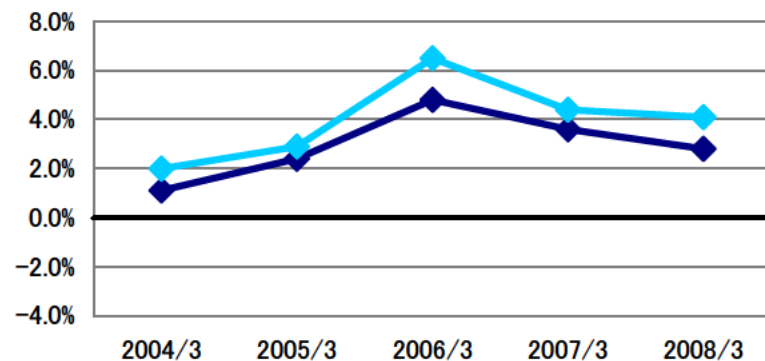
収益性指標(連結) Profitability (Consolidated)

◆ 売上高総利益率(%) Ratio of gross profit to net sales(%)

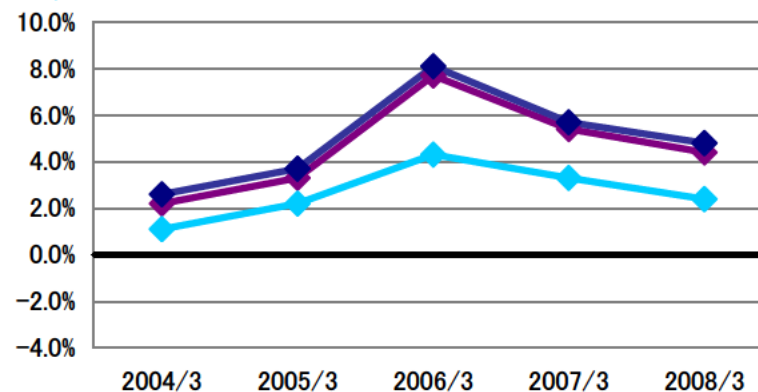


◆ 自己資本利益率(%) Return on equity(%)

◆ 総資産経常利益率(%) Return on total assets(%)

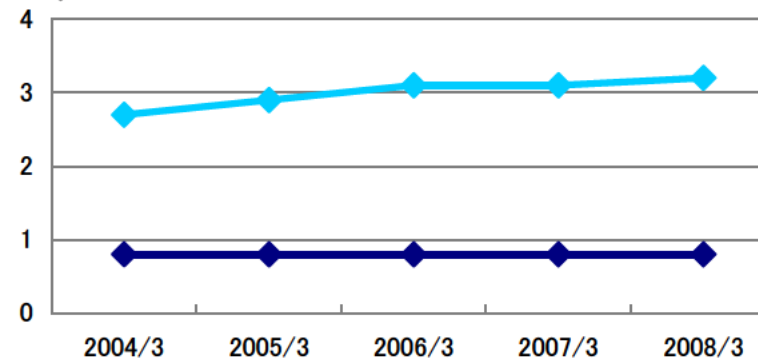


◆ 売上高営業利益率(%) Ratio of operating income to net sales(%)
 ◆ 売上高経常利益率(%) Ratio of ordinary income to net sales(%)
 ◆ 売上高当期純利益率(%) Ratio of net income to net sales(%)



◆ 有形固定資産回転率(回) Tangible fixed assets turnover(Times)

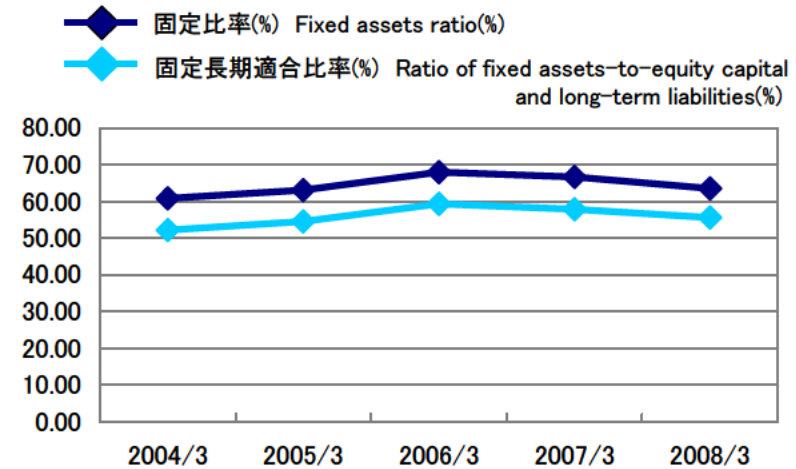
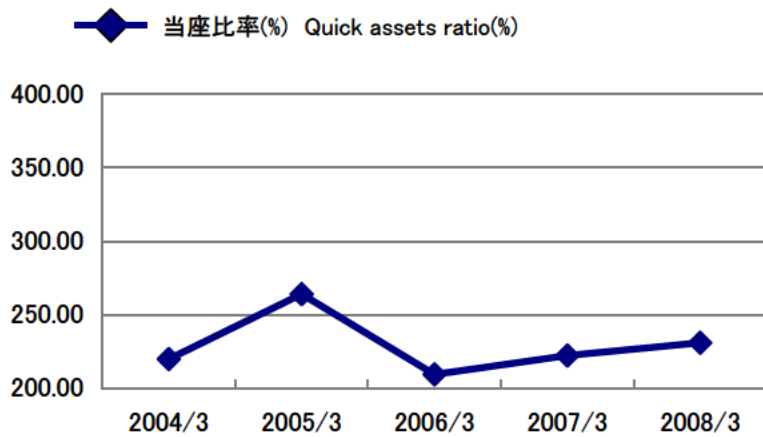
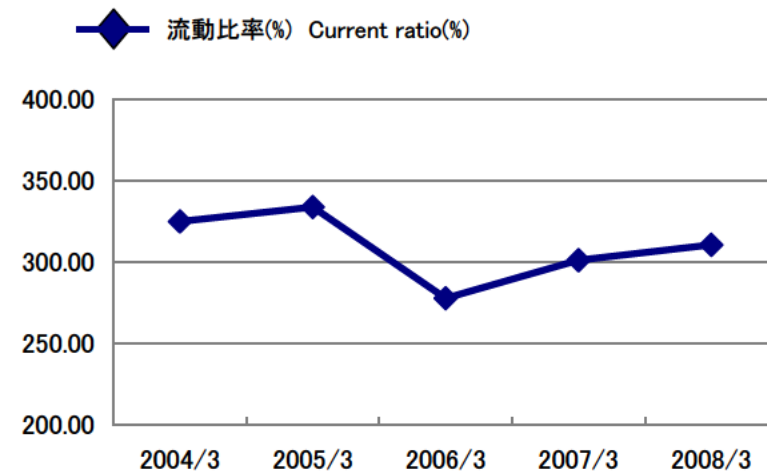
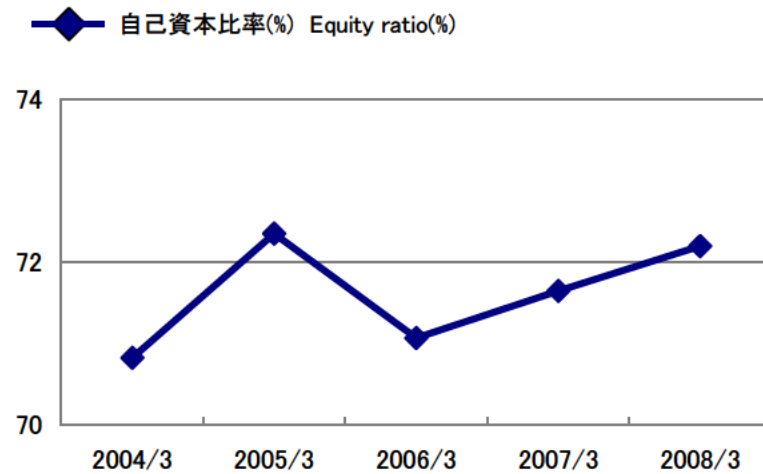
◆ 総資産回転率(回) Total assets turnover(Times)



売上高総利益率(%)	Ratio of gross profit to net sales (%)
売上高営業利益率(%)	Ratio of operating income to net sales (%)
売上高経常利益率(%)	Ratio of ordinary income to net sales (%)
売上高当期純利益率(%)	Ratio of net income to net sales (%)
自己資本利益率(%)	Return on equity (%)
総資産経常利益率(%)	Return on total assets (%)
総資産回転率(回)	Total assets turnover (Times)
有形固定資産回転率(回)	Tangible fixed assets turnover (Times)

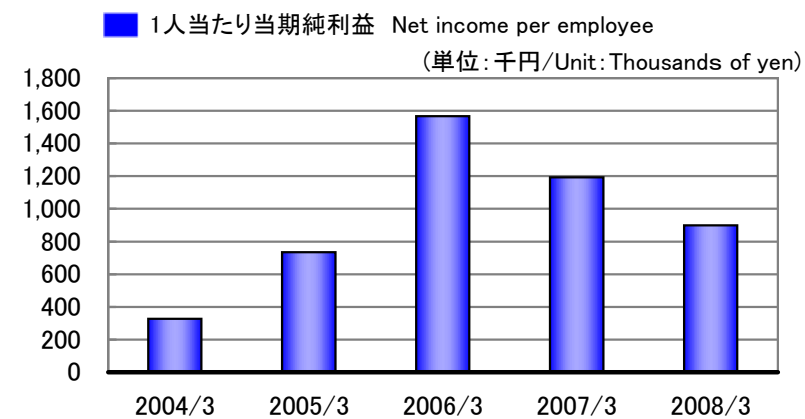
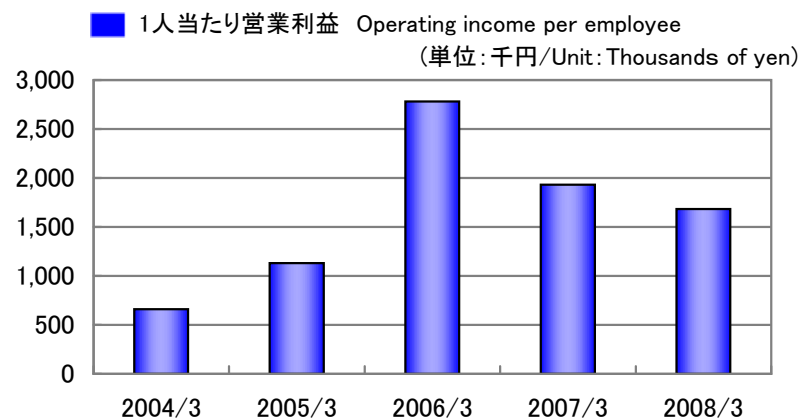
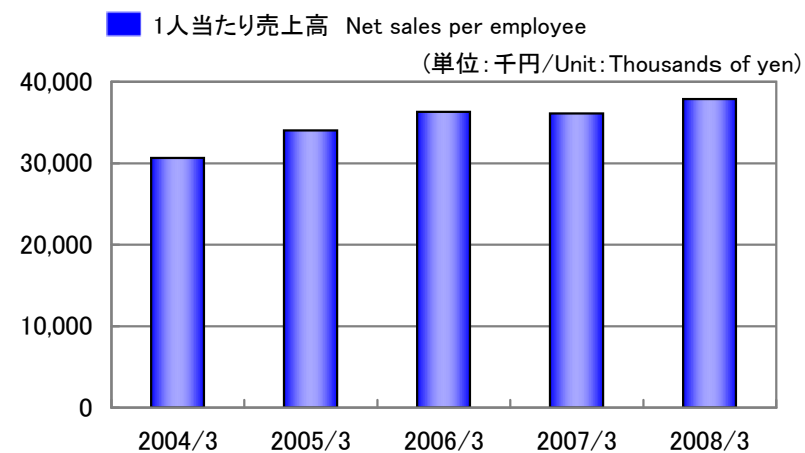
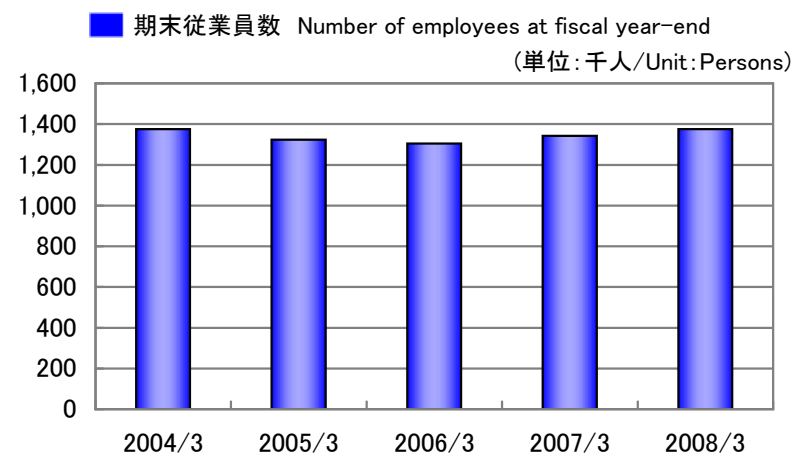
	2004/3	2005/3	2006/3	2007/3	2008/3
売上高総利益率(%)	8.7%	9.0%	13.4%	11.5%	10.7%
売上高営業利益率(%)	2.2%	3.3%	7.7%	5.4%	4.4%
売上高経常利益率(%)	2.6%	3.7%	8.1%	5.7%	4.8%
売上高当期純利益率(%)	1.1%	2.2%	4.3%	3.3%	2.4%
自己資本利益率(%)	1.1%	2.4%	4.8%	3.6%	2.8%
総資産経常利益率(%)	2.0%	2.9%	6.5%	4.4%	4.1%
総資産回転率(回)	0.8回	0.8回	0.8回	0.8回	0.8回
有形固定資産回転率(回)	2.7回	2.9回	3.1回	3.1回	3.2回

安全性指標(連結) Stability (Consolidated)



		2004/3	2005/3	2006/3	2007/3	2008/3
自己資本比率(%)	Equity ratio (%)	70.83	72.35	71.07	71.65	72.24
流動比率(%)	Current ratio (%)	325.00	333.83	277.89	301.20	310.69
当座比率(%)	Quick assets ratio (%)	219.80	263.90	209.34	222.20	230.86
固定比率(%)	Fixed assets ratio (%)	60.81	63.07	67.95	66.67	63.55
固定長期適合比率(%)	Ratio of fixed assets-to-equity capital and long-term liabilities (%)	52.22	54.51	59.33	57.90	55.62

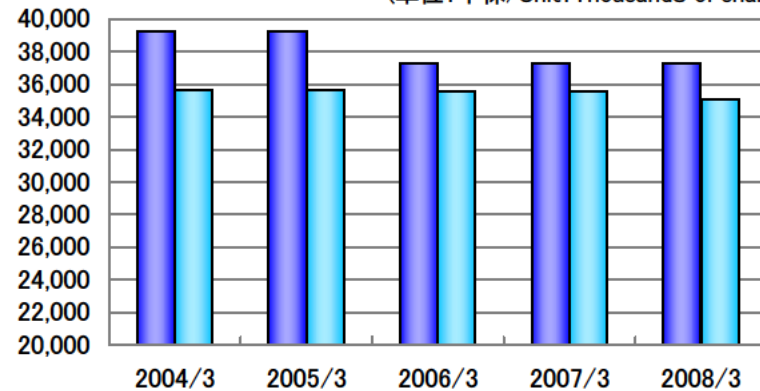
従業員1人当たり指標(連結) Per Employee (Consolidated)



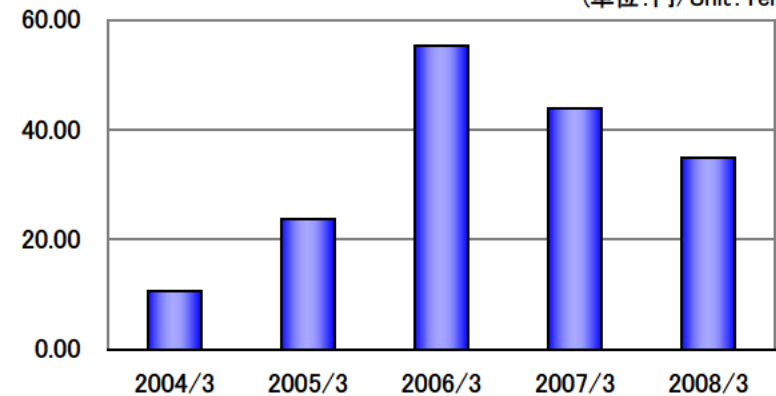
		2004/3	2005/3	2006/3	2007/3	2008/3
期末従業員数(人)	Number of employees at fiscal year-end (Persons)	1,376	1,324	1,305	1,343	1,375
1人当たり売上高(千円)	Net sales per employee (Thousands of yen)	30,667	34,014	36,287	36,106	37,884
1人当たり営業利益(千円)	Operating income per employee (Thousands of yen)	659	1,131	2,782	1,932	1,684
1人当たり当期純利益(千円)	Net income per employee (Thousands of yen)	328	735	1,566	1,192	900

1株当たり指標(個別) Per Share Data (Non-Consolidated)

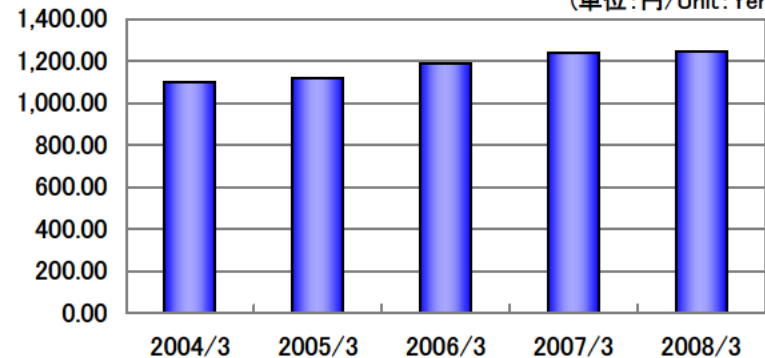
■ 発行済株式総数 Number of outstanding shares issued
 ■ 自己株式控除後発行済株式総数 After deduction from treasury stock
 (単位:千株/Unit:Thousands of share)



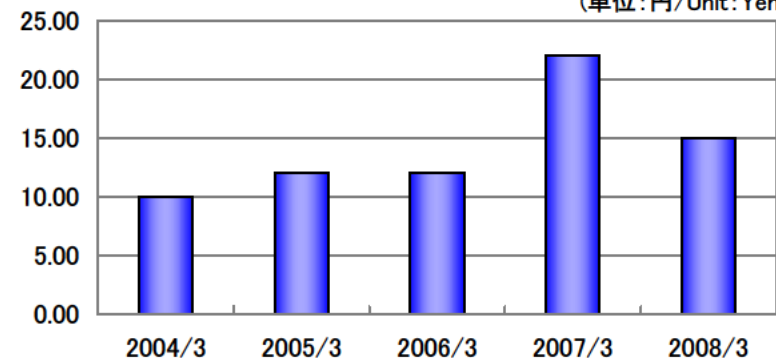
■ 1株当たり当期純利益 Net income per share
 (単位:円/Unit:Yen)



■ 1株当たり純資産額 Net assets per share
 (単位:円/Unit:Yen)



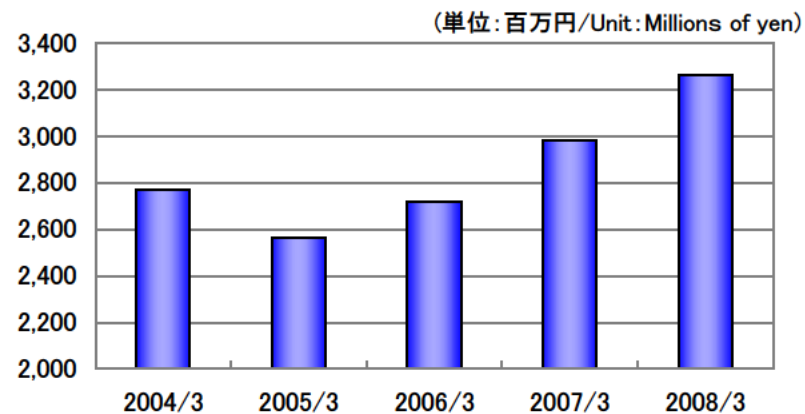
■ 1株当たり配当金 Cash dividends per share
 (単位:円/Unit:Yen)



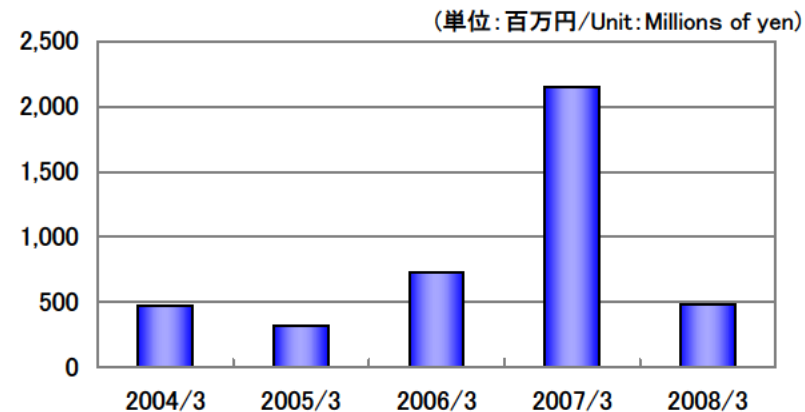
		2004/3	2005/3	2006/3	2007/3	2008/3
発行済株式総数(千株)	Number of outstanding shares issued (Thousands of share)	39,261	39,261	37,261	37,261	37,261
(自己株式控除後)	After deduction from treasury stock	35,645	35,615	35,576	35,548	35,030
1株当たり当期純利益(円)	Net income per share (Yen)	10.63	23.77	55.24	43.93	32.63
1株当たり純資産額(円)	Net assets per share (Yen)	1,099.37	1,118.50	1,190.91	1,238.44	1,207.93
1株当たり配当金(円)	Cash dividends per share (Yen)	10.00	12.00	12.00	22.00	15.00

その他指標(連結) Other Data (Consolidated)

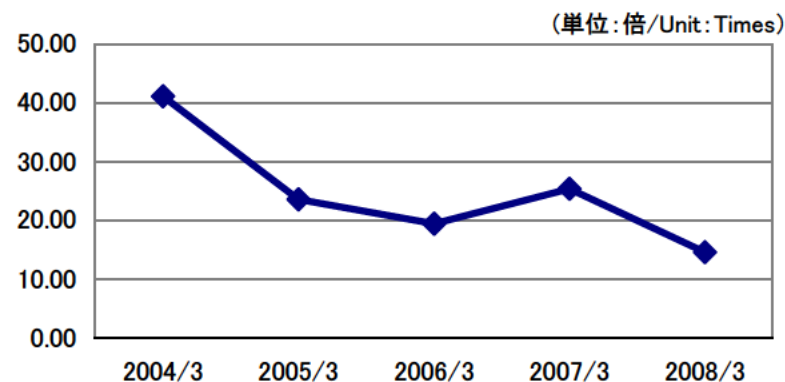
■ 販売費及び一般管理費 Selling, general and administrative expenses



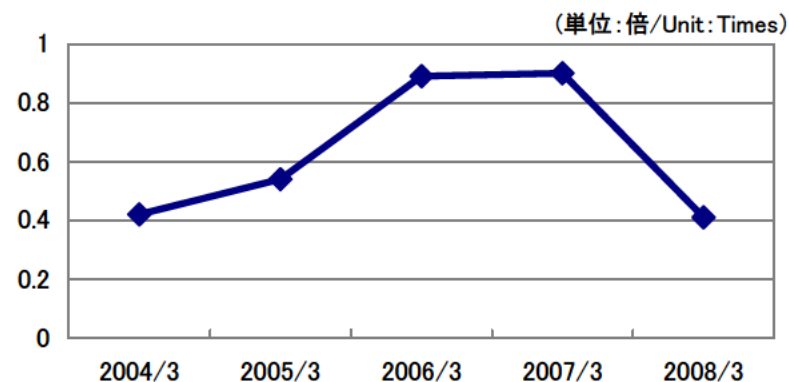
■ 設備投資額(連結) Capital investment(consolidated)



■ 株価収益率 Price earnings ratio



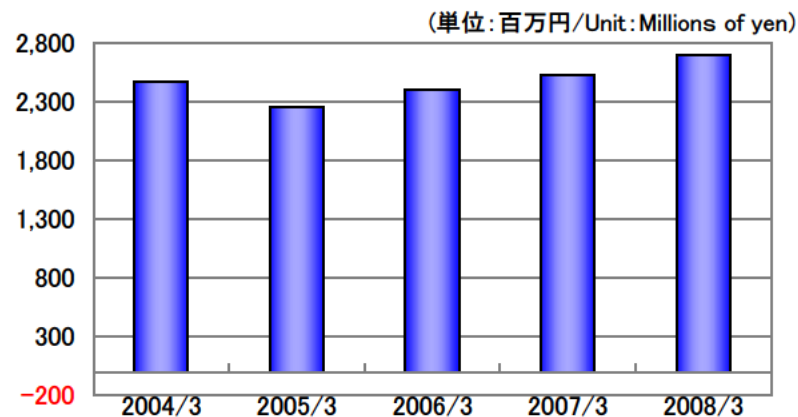
■ 株価純資産倍率 Price book-value ratio



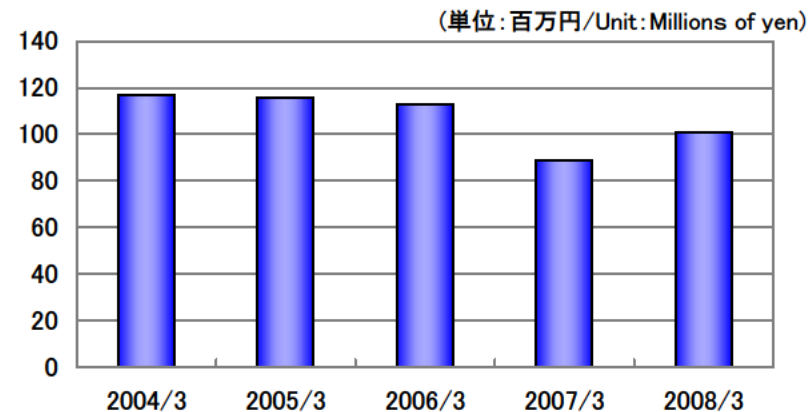
		2004/3	2005/3	2006/3	2007/3	2008/3
販売費及び一般管理費(百万円)	Selling, general and administrative expenses (Millions of yen)	2,772	2,564	2,721	2,980	3,264
設備投資額(百万円)	Capital investment (Millions of yen)	474	313	726	2,149	484
株価収益率(倍)	Price earnings ratio (Times)	41.08	23.55	19.40	25.36	14.59
株価純資産倍率(倍)	Price book-value ratio (Times)	0.42	0.54	0.89	0.90	0.41

その他指標(個別) Other Data (Non-Consolidated)

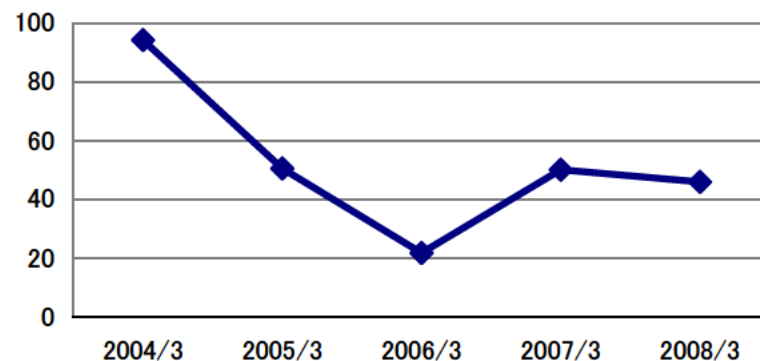
■ 販売費及び一般管理費 Selling, general and administrative expenses



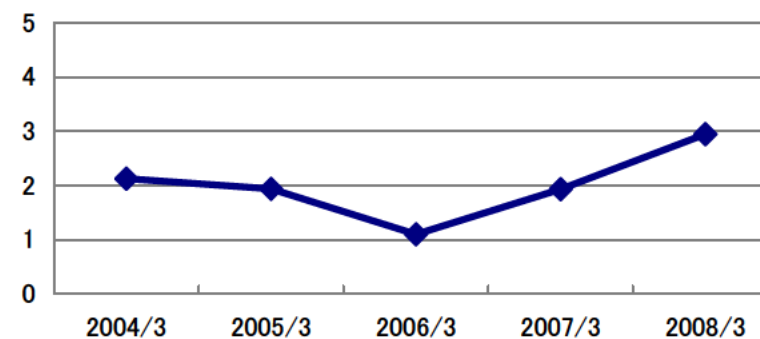
■ 研究開発費 Research and development expenditure



■ 配当性向(%) Dividend payout ratio(%)



■ 配当利回り(%) Dividend yield(%)



		2004/3	2005/3	2006/3	2007/3	2008/3
販売費及び一般管理費(百万円)	Selling, general and administrative expenses (Millions of yen)	2,467	2,254	2,402	2,531	2,702
研究開発費(百万円)	Research and development expenditure (Millions of yen)	117	116	113	89	101
配当性向(%)	Dividend payout ratio (%)	94.07	50.48	21.72	50.08	45.97
配当利回り(%)	Dividend yield (%)	2.13	1.94	1.10	1.93	2.95

連結貸借対照表 [資産の部] Consolidated Balance Sheets [Assets]

(単位: 百万円/Unit: Millions of yen)

		2004/3	2005/3	2006/3	2007/3	2008/3
資産の部	Assets					
流動資産	Current assets	32,372	30,822	31,712	32,978	32,653
現金預金	Cash and cash equivalents	4,594	4,457	4,793	4,735	3,692
受取手形・完成工事未収入金等	Notes and accounts receivable-trade	12,900	12,347	12,894	12,555	11,254
有価証券	Marketable securities	4,401	7,561	6,203	7,040	9,316
未成工事支出金等	Construction projects in progress	9,538	5,566	6,670	7,438	7,195
繰延税金資産	Deferred tax assets	719	671	972	841	963
その他	Other	221	218	178	369	232
貸倒引当金	Allowance for doubtful accounts	△ 3	△ 0	△ 0	△ 2	△ 1
固定資産	Fixed assets	24,494	25,869	29,619	30,159	27,711
有形固定資産	Property and equipment	15,591	15,232	15,087	16,539	16,173
建物・構築物	Buildings and structures	13,199	13,126	13,006	14,776	6,488
機械・運搬具	Machinery and vehicles	1,889	1,963	2,017	2,040	321
工具器具・備品	Tools and equipment	3,251	3,334	3,490	3,566	582
土地	Land	8,754	8,754	8,575	8,575	8,575
建設仮勘定	Construction in progress	6	0	169	4	206
減価償却累計額	Accumulated depreciation	△ 11,510	△ 11,946	△ 12,171	△ 12,423	-
無形固定資産	Intangible fixed assets	131	87	144	198	182
投資その他の資産	Investments and other assets	8,772	10,548	14,386	13,421	11,355
投資有価証券	Investment securities	6,885	8,604	12,704	12,576	9,819
長期貸付金	Long-term loans receivable	27	14	7	3	2
繰延税金資産	Deferred tax assets	1,224	1,174	548	112	1,099
その他	Other	697	853	1,215	818	521
貸倒引当金	Allowance for doubtful accounts	△ 62	△ 97	△ 89	△ 89	△ 86
資産合計	Total assets	56,867	56,692	61,331	63,138	60,364

※当連結会計年度において、有形固定資産の表示については、前連結会計年度まで間接控除形式で表示していたが、当連結会計年度より直接控除形式に変更しています。(なお、前連結会計年度と同様の形式による当連結減価償却累計額は△12,914百万円)

連結貸借対照表 [負債/資本の部] Consolidated Balance Sheets [Liabilities/Shareholders' Equity]

(単位:百万円/Unit:Millions of yen)

		2004/3	2005/3	2006/3	2007/3	2008/3
負債の部	Liabilities					
流動負債	Current liabilities	9,960	9,232	11,411	10,949	10,510
支払手形・工事未払金等	Notes and accounts payable-trade	4,697	5,573	5,588	6,112	5,554
短期借入金	Short-term borrowings	300	300	300	716	686
未払法人税等	Accrued incom taxes	245	700	1,650	477	511
未成工事受入金	Advances received on construction projects in progress	2,723	656	1,075	795	1,123
役員賞与引当金	Allowance for bonuses to directors	-	-	-	43	43
完成工事補償引当金	Allowance for compensation for construction damages	-	12	25	16	15
工事損失引当金	Allowance for losses on construction contracts	-	32	542	281	295
その他	Other	1,993	1,956	2,230	2,505	2,280
固定負債	Long-term liabilities	6,625	6,441	6,329	6,854	6,217
長期借入金	Long-term debt	-	-	-	200	225
繰延税金負債	Deferred tax liabilities	11	9	6	88	14
退職給付引当金	Accrued retirement benefits	6,421	6,288	6,164	5,956	5,613
役員退職慰労引当金	Allowance for retirement benefits for directors and auditors	91	93	102	86	85
その他	Other	101	49	56	522	278
負債合計	Total liabilities	16,585	15,674	17,741	17,803	16,728
資本の部	Shareholders' equity					
資本金	Common stock	2,881	2,881	2,881	-	-
資本剰余金	Capital surplus	3,723	3,723	3,725	-	-
利益剰余金	Retained earnings	33,066	33,645	34,465	-	-
その他有価証券評価差額金	Net unrealized holding gain on available-for-sale securities	1,909	2,082	3,146	-	-
自己株式	Treasury stock	△ 1,298	△ 1,314	△ 627	-	-
資本合計	Total shareholders' equity	40,281	41,017	43,590	-	-
純資産の部	Net assets					
資本金	Common stock	-	-	-	2,881	2,881
資本剰余金	Capital surplus	-	-	-	3,727	3,728
利益剰余金	Retained earnings	-	-	-	35,419	35,998
自己株式	Treasury stock	-	-	-	△ 658	△ 966
株主資本合計	Total shareholders' equity	-	-	-	41,369	41,642
その他有価証券評価差額金	Net unrealized holding gain on available-for-sale securities	-	-	-	3,865	1,962
少数株主持分	Minority interests	-	-	-	98	31
純資産合計	Total net assets	-	-	-	45,334	43,636
負債・純資産(資本)合計	Total liabilities, net assets (Shareholders' equity)	(56,867	56,692	61,331)	63,138	60,364

連結損益計算書 Consolidated Statements of Operations

		(単位:百万円/Unit:Millions of yen)				
		2004/3	2005/3	2006/3	2007/3	2008/3
売上高 (完成工事高)	Net sales	42,198	45,034	47,354	48,490	52,090
売上原価 (完成工事原価)	Cost of sales	38,518	40,972	41,001	42,915	46,509
売上総利益(完成工事総利益)	Gross profit	3,680	4,062	6,353	5,575	5,580
販売費及び一般管理費	Selling, general and administrative expenses	2,772	2,564	2,721	2,980	3,264
営業利益	Operating income	907	1,497	3,631	2,595	2,316
営業外収益	Non-operating income	184	180	206	205	351
営業外費用	Non-operating expenses	8	18	16	47	159
経常利益	Ordinary income	1,082	1,659	3,822	2,753	2,508
特別利益	Extraordinary income	73	100	43	69	5
特別損失	Extraordinary loss	185	70	244	20	420
税金等調整前当期純利益	Income before income taxes	971	1,689	3,621	2,802	2,093
法人税、住民税及び事業税	Income taxes-current	280	737	1,986	1,036	795
法人税等調整額	Income taxes-deferred	239	△ 22	△ 408	159	128
少数株主利益又は少数株主損失(△)		-	-	-	4	△ 67
当期純利益	Net income	451	973	2,043	1,601	1,237

連結キャッシュフロー計算書 Consolidated Statements of Cash Flows

		(単位:百万円/Unit:Millions of yen)				
		2004/3	2005/3	2006/3	2007/3	2008/3
営業活動によるキャッシュ・フロー	Cash flows from operating activities	△ 751	5,298	2,651	656	3,704
投資活動によるキャッシュ・フロー	Cash flows from investment activities	△ 1,042	△ 5,912	△ 2,368	△ 1,213	△ 4,783
財務活動によるキャッシュ・フロー	Cash flows from financing activities	△ 704	△ 376	△ 499	△ 422	△ 966
現金及び現金同等物の増減額	Net increase (decrease) in cash and cash equivalents	△ 2,499	△ 991	△ 216	△ 979	△ 2,047
現金及び現金同等物の期首残高	Cash and cash equivalents at beginning of year	9,400	6,900	5,909	5,693	5,223
現金及び現金同等物の期末残高	Cash and cash equivalents at end of year	6,900	5,909	5,693	5,223	3,176

貸借対照表 [資産の部] Non-Consolidated Balance Sheets [Assets]

		(単位:百万円/Unit: Millions of yen)				
		2004/3	2005/3	2006/3	2007/3	2008/3
資産の部	Assets					
流動資産	Current assets	31,841	30,031	30,778	30,199	29,977
現金預金	Cash and cash equivalents	3,938	3,655	3,903	3,081	2,280
受取手形	Notes receivable	583	125	95	658	176
完成工事未収入金	Accounts receivable-trade	12,270	12,167	12,672	11,303	10,219
有価証券	Marketable securities	4,397	7,561	6,203	6,880	9,316
未成工事支出金	Construction projects in progress	9,509	5,416	6,592	7,168	6,743
材料貯蔵品	Stock of materials	50	71	89	78	113
繰延税金資産	Deferred tax assets	671	635	924	786	822
その他	Other	420	397	296	240	304
固定資産	Fixed assets	23,482	25,069	28,890	29,284	26,794
有形固定資産	Property and equipment	14,313	13,976	13,657	14,545	14,141
建物・構築物	Buildings and structures	5,629	5,296	5,014	5,831	5,484
機械・運搬具	Machinery and vehicles	156	133	198	270	220
工具器具・備品	Tools and equipment	218	243	319	318	287
土地	Land	8,302	8,302	8,123	8,123	8,123
建設仮勘定	Construction in progress	6	0	-	-	24
無形固定資産	Intangible fixed assets	125	83	130	184	170
ソフトウェア	Software	95	55	52	161	141
その他無形固定資産	Other intangible fixed assets	28	26	75	22	27
投資その他の資産	Investments and other assets	9,043	11,010	15,102	14,555	12,482
投資有価証券	Investment securities	6,874	8,579	12,676	12,565	9,812
関係会社株式	Investment securities of affiliated companies	216	231	231	236	236
長期貸付金	Long-term loans receivable	2	1	1	0	-
繰延税金資産	Deferred tax assets	1,123	1,084	447	-	973
その他	Other	888	1,210	1,834	1,840	1,546
貸倒引当金	Allowance for doubtful accounts	△ 62	△ 97	△ 89	△ 89	△ 86
資産合計	Total assets	55,324	55,100	59,668	59,483	56,771

貸借対照表 [負債/資本の部] Non-Consolidated Balance Sheets [Liabilities/Shareholders' Equity]

(単位:百万円/Unit: Millions of yen)

		2004/3	2005/3	2006/3	2007/3	2008/3
負債の部	Liabilities					
流動負債	Current liabilities	9,648	8,916	11,081	9,403	8,848
工事未払金	Accounts payable-trade	4,602	5,377	5,453	5,375	4,669
短期借入金	Short-term borrowings	300	300	300	300	300
未払費用	Accrued expense	1,210	1,352	1,333	1,343	1,378
未払法人税等	Accrued income taxes	231	674	1,602	409	449
未成工事受入金	Advances received on construction projects in progress	2,723	648	1,049	619	1,047
完成工事補償引当金	Allowance for compensation for construction damages	-	12	25	16	15
工事損失引当金	Allowance for losses on construction contracts	-	32	540	280	291
その他	Other	577	517	775	1,056	695
固定負債	Long-term liabilities	6,458	6,318	6,189	6,055	5,610
退職給付引当金	Accrued retirement benefits	6,351	6,212	6,074	5,861	5,512
役員退職慰労引当金	Allowance for retirement benefits for directors and auditors	70	69	78	60	62
その他	Other	36	36	36	132	35
負債合計	Total liabilities	16,106	15,234	17,270	15,459	14,458
資本の部	Shareholders' equity					
資本金	Common stock	2,881	2,881	2,881	-	-
資本剰余金	Capital Surplus	3,723	3,723	3,725	-	-
利益剰余金	Retained earnings	32,008	32,498	33,280	-	-
その他有価証券評価差額金	Net unrealized holding gain on available-for-sale securities	1,904	2,076	3,138	-	-
自己株式	Treasury stock	△ 1,298	△ 1,314	△ 627	-	-
資本合計	Total shareholders' equity	39,217	39,865	42,398	-	-
純資産の部	Net assets					
資本金	Common stock	-	-	-	2,881	2,881
資本剰余金	Capital surplus	-	-	-	3,727	3,728
利益剰余金	Retained earnings	-	-	-	34,208	34,707
自己株式	Treasury stock	-	-	-	△ 658	△ 966
株主資本合計	Total shareholders' equity	-	-	-	40,158	40,351
評価・換算差額等合計	Total valuation and translation adjustments	-	-	-	3,866	1,962
純資産合計	Total net assets	-	-	-	44,024	42,313
負債・純資産(資本)合計	Total liabilities, net assets (Shareholders' equity)	(55,324	55,100	59,668)	59,483	56,771

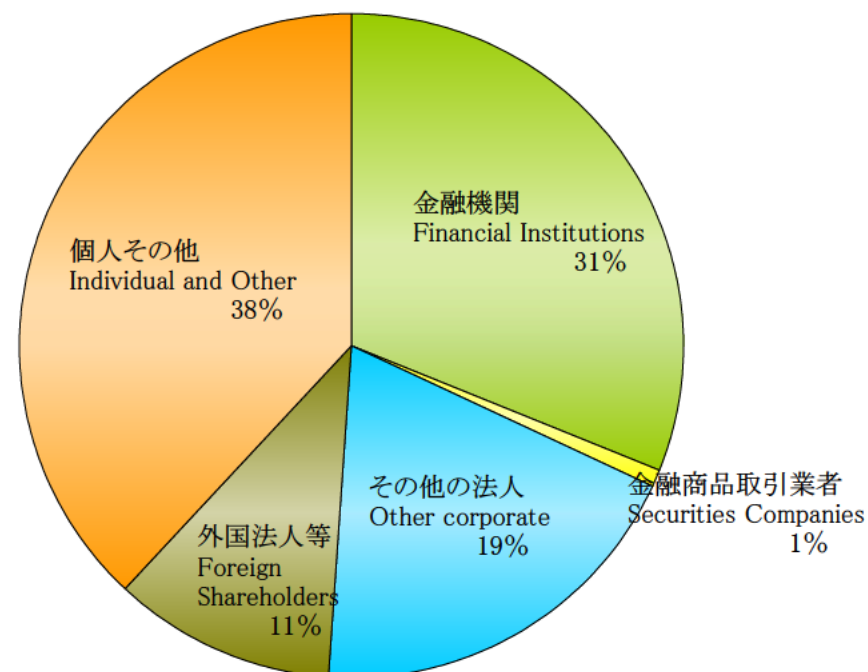
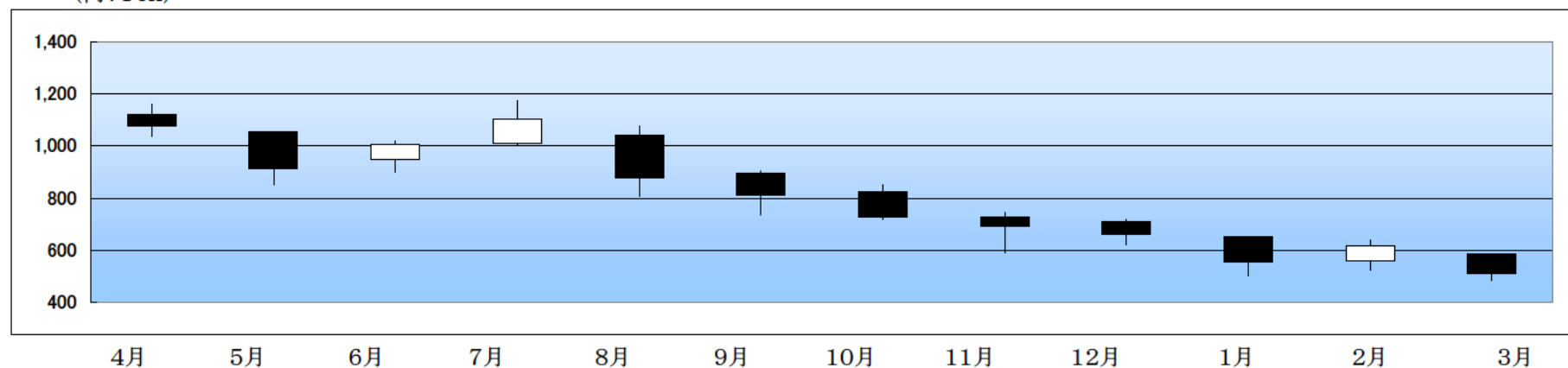
損益計算書 Non-Consolidated Statements of Operations

		(単位: 百万円/Unit: Millions of yen)				
		2004/3	2005/3	2006/3	2007/3	2008/3
売上高 (完成工事高)	Net sales	41,734	44,645	46,736	46,807	49,116
売上原価 (完成工事原価)	Cost of sales	38,455	41,086	40,869	41,784	44,360
売上総利益(完成工事総利益)	Gross profit	3,278	3,559	5,867	5,022	4,755
販売費及び一般管理費	Selling, general and administrative expenses	2,467	2,254	2,402	2,531	2,702
営業利益	Operating income	811	1,304	3,464	2,490	2,053
営業外収益	Non-operating income	215	214	242	216	297
営業外費用	Non-operating expenses	8	18	16	35	141
経常利益	Ordinary income	1,017	1,499	3,690	2,671	2,210
特別利益	Extraordinary income	65	99	42	54	-
特別損失	Extraordinary loss	180	64	190	4	140
税引前当期純利益	Income before income taxes	901	1,534	3,541	2,721	2,069
法人税、住民税及び事業税	Income taxes-current	254	701	1,925	974	709
法人税等調整額	Income taxes-deferred	233	△ 44	△ 380	184	203
当期純利益	Net income	413	876	1,996	1,562	1,156

会社概況 Corporate Information

商号 Company Name	株式会社東京エネシス TOKYO ENERGY & SYSTEMS INC.
本店所在地 Address of Head Office	〒105-0004 東京都港区新橋六丁目9番7号 9-7 Shimbashi 6-chome, Minato-ku, Tokyo, Japan
設立 Established	1947年(昭和22年)8月14日 August 14, 1947
資本金 Capital	28億81百万円 2,881millions of yen
株式上市 Exchange	東京証券取引所 市場第一部(証券コード1945) Tokyo Stock Exchange, First Section (Code: 1945)
従業員数 Number of Employees	1,375名(H20.3.31現在) 1,375
ホームページアドレス URL	http://www.qtes.co.jp/ http://www.qtes.co.jp/

所有者別分布状況 Shareholders by Category

株価の推移 Stock Price Range
(円:Yen)

株式会社東京エネシス お客様本部 広報室

TOKYO ENERGY & SYSTEMS INC.

Public Relations Division

TEL 03-4253-6310

FAX 03-4253-6308

URL <http://www.qtes.co.jp>